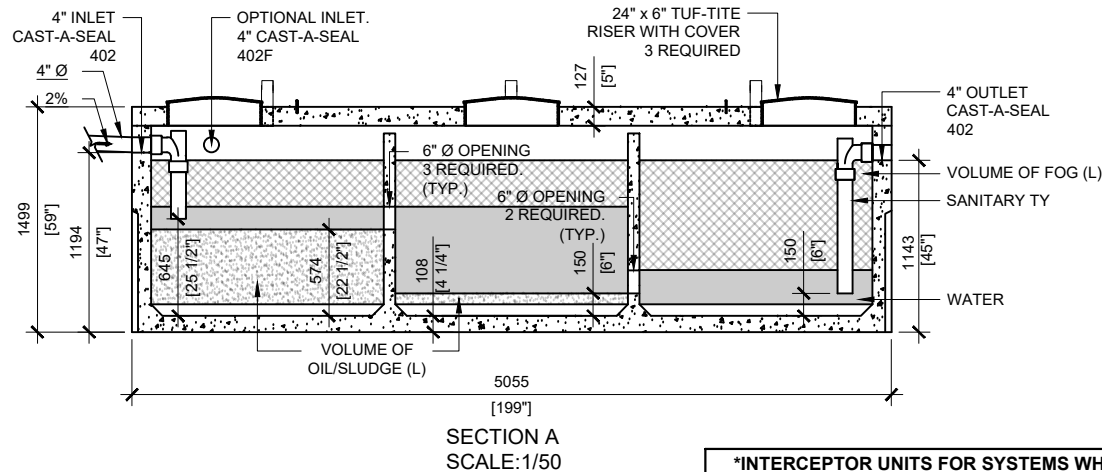


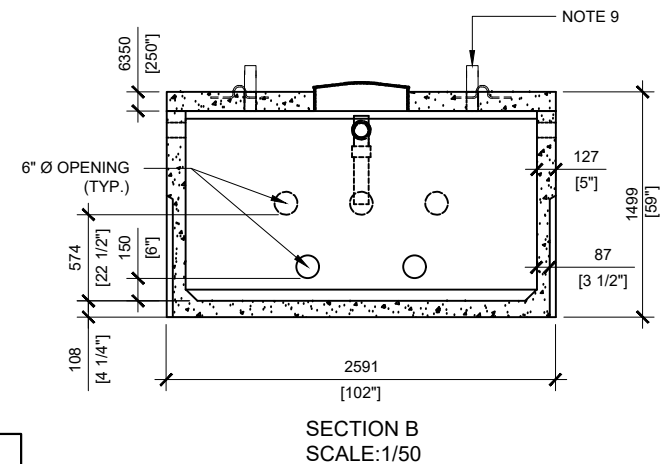
MAXIMUM FLOW RATE: 139L/min.
FOR THE SEPARATION OF OIL
AND GREASE.

GENERAL NOTES:

1. UNITS ARE SEALED WITH BUTYL TAPE AT THE JOINTS
2. DELIVERY IS MADE BY CRANE-EQUIPPED TRUCKS
3. EXCAVATION MUST BE READY, SAFE AND ACCESSIBLE FOR UNLOADING FROM THE REAR OF THE TRUCK.
4. MIN OVERHEAD CLEARANCE OF 18FT (5.5 METRES) IS REQUIRED
5. ALL UNITS MUST BE HANDLED WITH PROPER LIFTING EQUIPMENT.
6. MAXIMUM BURIAL DEPTH = 1 METRE IN FIRM SOIL AWAY FROM ANY VEHICULAR TRAFFIC
7. NOT INTENDED FOR STORMWATER APPLICATIONS.
8. CSA PERFORMANCE DATA PARAMETERS:
WATER = 23° (+/- 2°C)
OIL = 0.92 (+/- 0.01) SPECIFIC GRAVITY AT 20°C
9. 3" DIAMETER PVC PIPING FOR VENT
6 REQUIRED. ONLY 3 OPERATIONAL AT ONE TIME.



INTERCEPTOR UNITS FOR SYSTEMS WHICH CAPTURE PETROLEUM BASED PRODUCTS E.G. VEHICLE FUEL/OIL REQUIRE SPECIALTY NITRILE SEALS AND WILL NEED TO BE FABRICATED AS A CUSTOM PRODUCT



MANUFACTURED:
BROOKLIN, ON
1-800-655-3430

CONCRETE: 35MPa / 5,000PSI
AIR ENTRAINMENT: 5-8%
REINFORCEMENT : STEEL TO CSA CAN
A23.1 / A23.3. G30.18 Fy=400MPa

WEIGHT:
27,180lbs / 12,330kg
CPA CERTIFIED
MEETS CSA-BB-00
"AGINP"

DRAWN BY:
N.CHAN

DATE:
MAY/2020

MODEL 250 GREASE/OIL/SEDIMENT
INTERCEPTOR

2,500 IMPERIAL GALLON / 11,365 LITRES
MAXIMUM FLOW RATE: 139 L/MINUTE