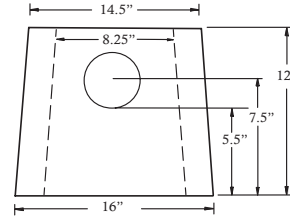


## DRIVEWAY CATCHBASIN



Wt. 363kg/800lbs.

**6' 6" L x 16" W x 12" H**  
c/w grate and 4" drain holes



## 18" RESIDENTIAL CATCHBASIN

### CONSTRUCTION SPECIFICATIONS

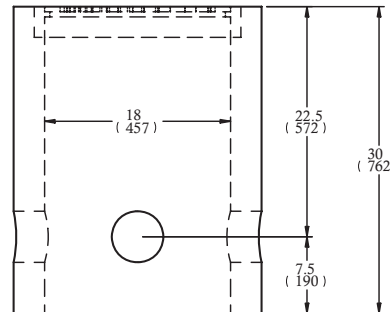
Wt. 280kg/600lbs

#### Concrete Properties

4500 PSI (32 MPa) Min Strength, 6-8% Air Entrainment

Not designed for direct vehicle loading

Complete with steel grate and 4" knockouts

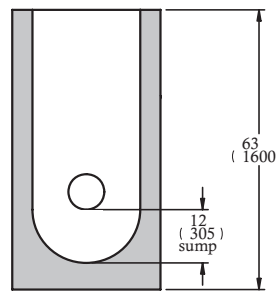
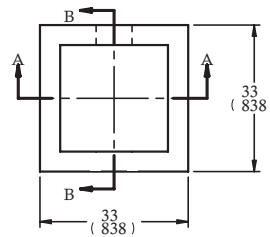


## 24" CATCHBASINS

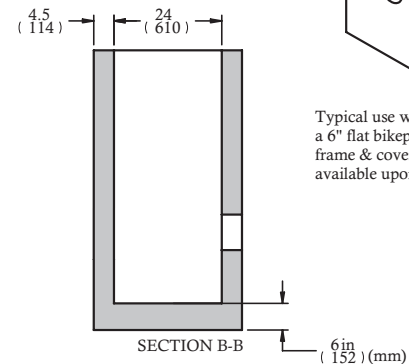
#### Concrete Properties

4500 PSI (32 MPa) Min Strength, 6-8% Air Entrainment

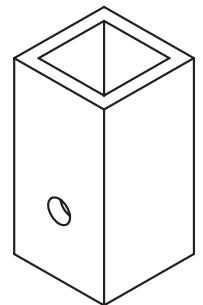
1. Overall height available at 63", 48", 42"
2. Stock units contain 12" sumps
3. Pipe knockouts available in 8", 12", 16" diameter
4. Custom placement of pipe knockouts upon request



SECTION A-A



SECTION B-B



Typical use would include a 6" flat bikeproof cast iron frame & cover (OPSD 400.02) available upon request

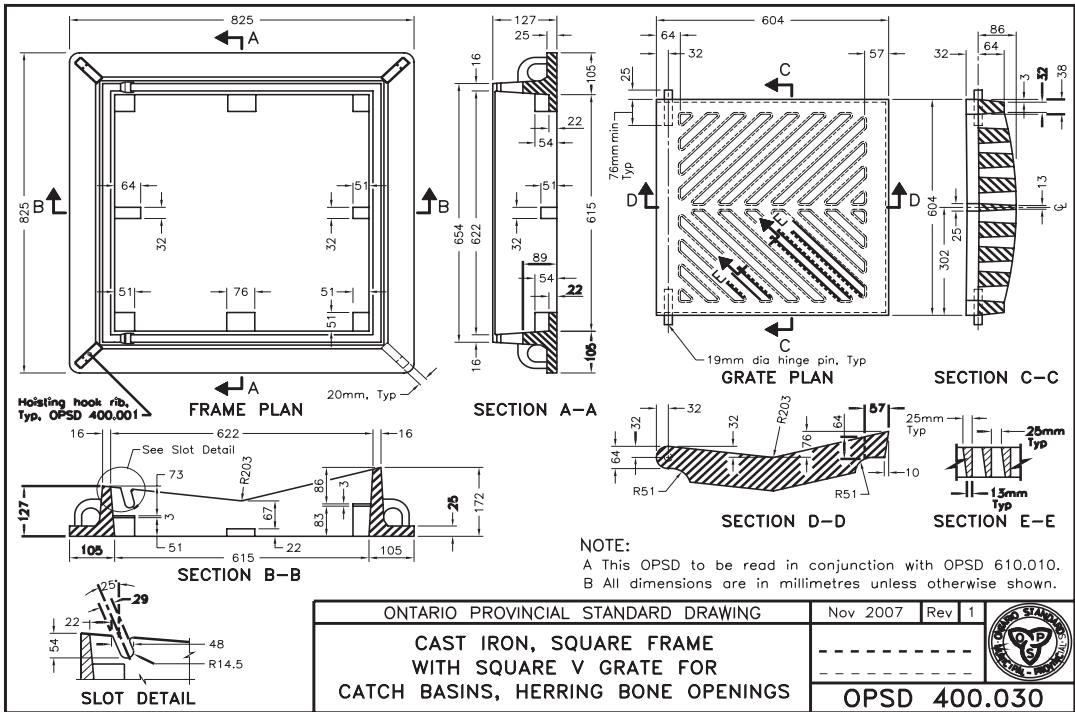
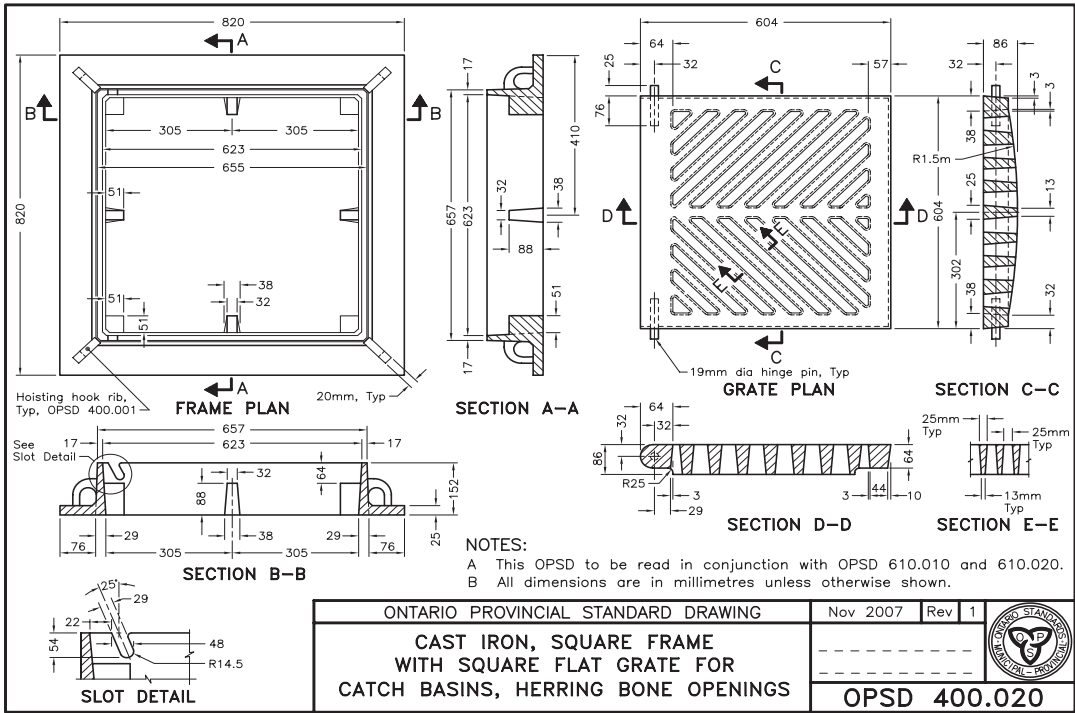
#### Unit Weights (approx.):

63" - 1433kg/3160lbs

48" - 1134kg/2500lbs

42" - 896kg/1975lbs

# 24" CATCHBASIN FRAME & GRATE



## BROOKLIN OFFICE

brooklinsales@brooklin.com

T: 905-655-3311 | 1-800-655-3430

F:

6760 Baldwin Street,  
Brooklin, ON, Canada L1M 1X8

## HUNTSVILLE / HALIBURTON OFFICE

huntsvillesales@brooklin.com

T: 705-789-2388 | 1-800-264-3302

F: 705-789-9829

21 Stephenson Road 12 (East of Hwy 11),  
Huntsville, ON, Canada P1H 2K8