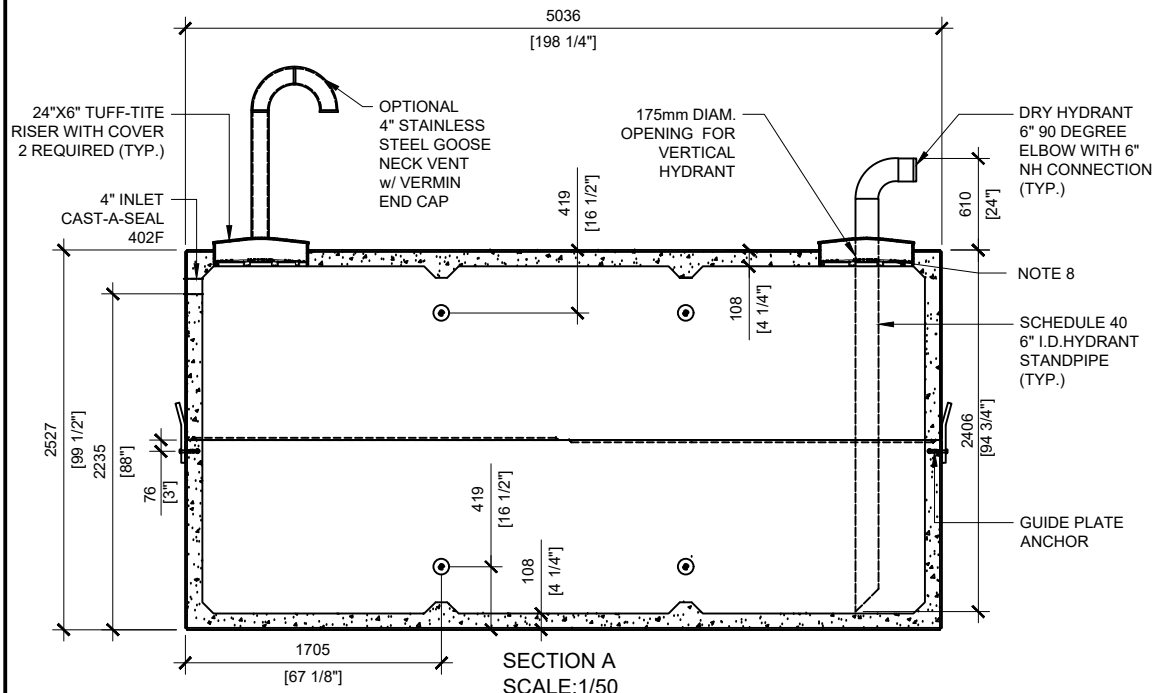
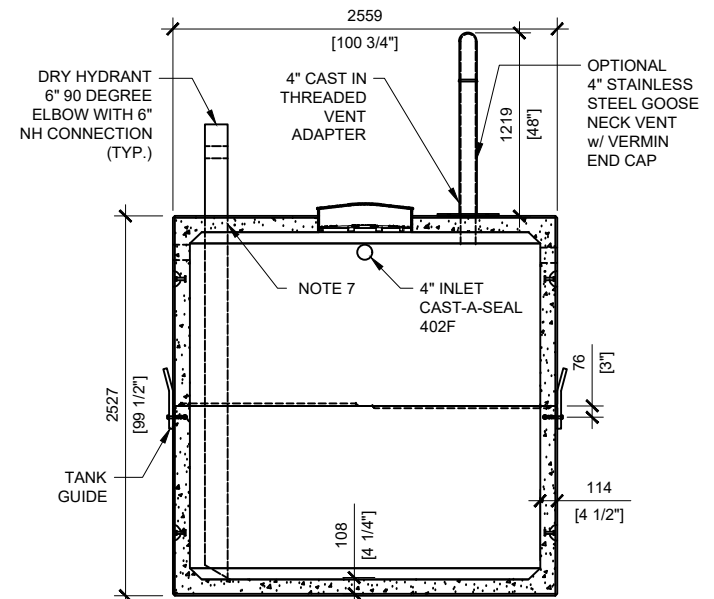


TOP VIEW
SCALE: 1/50



SECTION A
SCALE: 1/50

- GENERAL NOTES:**
1. UNITS ARE SEALED WITH BUTYL TAPE AT THE JOINTS
 2. DELIVERY IS MADE BY CRANE-EQUIPPED TRUCKS
 3. EXCAVATION MUST BE READY, SAFE AND ACCESSIBLE FOR UNLOADING FROM THE REAR OF THE TRUCK.
 4. MIN OVERHEAD CLEARANCE OF 18FT (5.5 METRES) IS REQUIRED
 5. ALL UNITS MUST BE HANDLED WITH PROPER LIFTING EQUIPMENT
 6. MAXIMUM BURIAL DEPTH = 1 METRE IN FIRM SOIL AWAY FROM ANY VEHICULAR TRAFFIC
 7. SCHEDULE 80 FLANGE FOR DRY HYDRANT TO BE FITTED ON SITE
 8. TUF-TITE SAFETY LID INSTALLED IN OPENING AS PER CSA-B66-21



SECTION B
SCALE: 1/50
SINGLE FIRE WATER TANK



MANUFACTURED:
LINDSAY, ON
1-800-655-3430

CONCRETE: 35MPa/ 5000PSI
AIR ENTRAINMENT: 5-8%
REINFORCEMENT: STEEL TO CSA CAN
A23.1 /A23.3 G30.18 Fy=400MPa

WEIGHT: 36,267lbs / 16,451kg
BOTTOM: 18,227lbs / 8,290kg
TOP: 17,990lbs / 8,160kg
CPA CERTIFIED
MEETS CAN/CSA-B66
"AGINP"

DRAWN BY:
PRASHAN

DATE:
NOV/2023

22000 LITRES

WORKING CAPACITY: 23,820L TO INVERT OF INLET

TOTAL CAPACITY: 25,852L TO UNDERSIDE OF CHAMBER LID