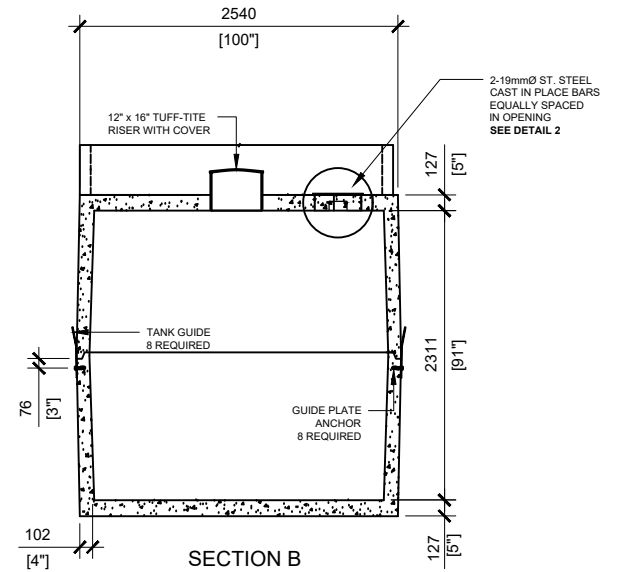
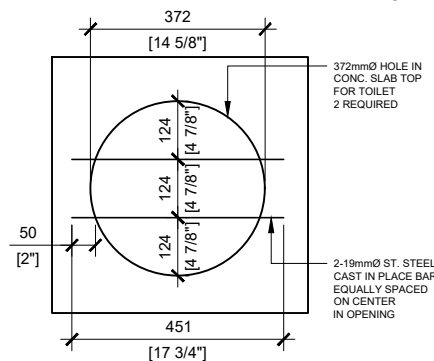


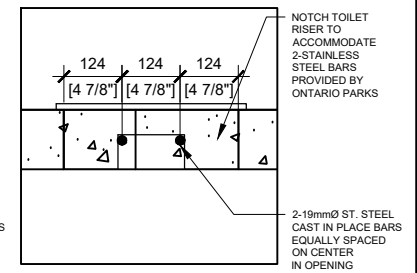
TOP VIEW
SCALE: 1/50



SECTION B
SCALE: 1/60



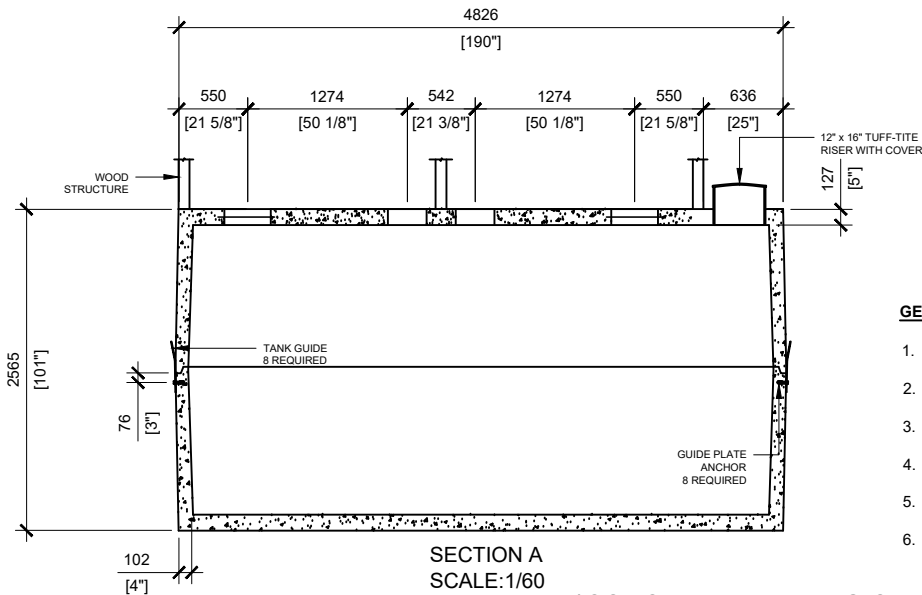
DETAIL 1: TOILET UNIT PLAN
SCALE: 1/16



DETAIL 2: TOILET UNIT SECTION
SCALE: 1/16

GENERAL NOTES:

1. UNITS ARE SEALED WITH BUTYL TAPE AT THE JOINTS
2. CONTRACTOR TO ENSURE CRANE IS ON-SITE TO OFFLOAD AND SET TANK
3. MIN OVERHEAD CLEARANCE OF 18FT (5.5 METRES) IS REQUIRED
4. ALL UNITS MUST BE HANDLED WITH PROPER LIFTING EQUIPMENT (I.E. SPREADER BAR)
5. SCHEMATIC ONLY (FURTHER DETAIL UPON REQUEST)
6. MAXIMUM BURIAL DEPTH = 1 METRE IN FIRM SOIL AWAY FROM ANY VEHICULAR TRAFFIC



SECTION A
SCALE: 1/60

CONCRETE BUILDING OPTIONS AVAILABLE



MANUFACTURED:
OTTAWA, ON
1-800-655-3430

CONCRETE: 45MPa at 28 days/6,500PSI
AIR ENTRAINMENT: 5-8%
REINFORCEMENT: STEEL TO CSA CAN
A23.1 /A23.3 G30.14-M1983

WEIGHT: TOP: 20,000lbs/9,070kg
BOTTOM: 20,000lbs/9,070kg
CSA APPROVED
MEETS CAN/CSA-B66
"AGINP"

DRAWN BY:
N.CHAN

DATE:
MAR/2021

PRIVY 22000 (WOOD STRUCTURE)

22,000 LITRES