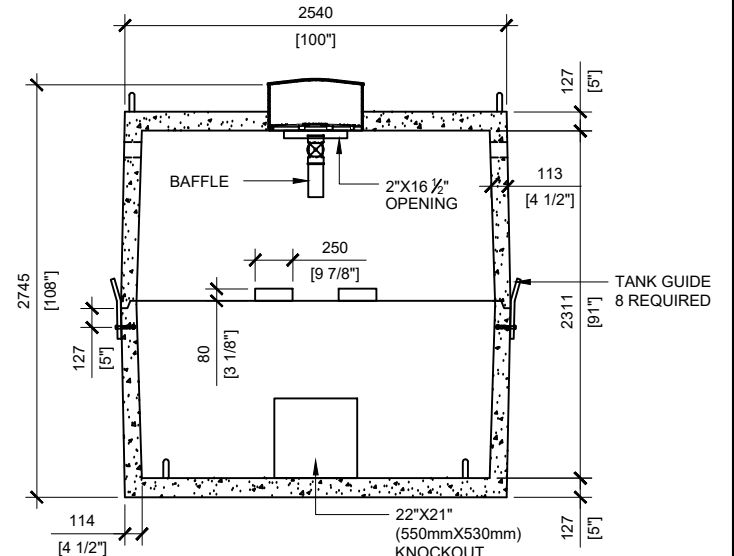
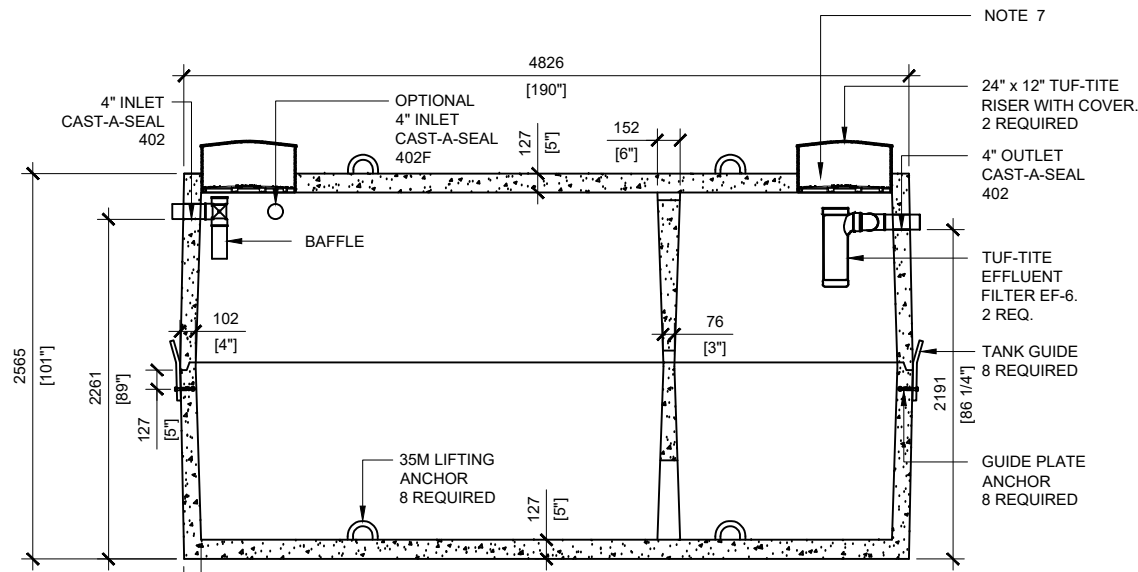


TOP VIEW
SCALE: 1/50



SECTION B
SCALE: 1/50



SECTION A
SCALE: 1/50

GENERAL NOTES:

1. UNITS ARE SEALED WITH BUTYL TAPE AT THE JOINTS
2. CONTRACTOR TO ENSURE CRANE IS ON-SITE TO OFFLOAD AND SET TANK
3. EXCAVATION MUST BE READY FOR INSTALL
4. MIN OVERHEAD CLEARANCE OF 18FT (5.5 METRES) IS REQUIRED
5. ALL UNITS MUST BE HANDLED WITH PROPER LIFTING EQUIPMENT
6. MAXIMUM BURIAL DEPTH = 1 METRE IN FIRM SOIL AWAY FROM ANY VEHICULAR TRAFFIC
7. TUF-TITE SAFETY LIDS INSTALLED IN BOTH OPENINGS AS PER CSA-B66-21



MANUFACTURED:
BROOKLIN, ON
1-800-655-3430

CONCRETE: 40MPa at 28 days / 5,800PSI
AIR ENTRAINMENT: 5-8%
REINFORCEMENT: STEEL TO CSA CAN
A23.1 /A23.3 G30.18 Fy=400MPa

WEIGHT: 39,254lbs / 17,843kg
BOTTOM: 19,866lbs / 9,030kg
TOP: 19,388lbs / 8,813kg
CSA APPROVED
"AGINP"

DRAWN BY:
JAY PATEL

DATE:
APRIL/2022

22000 LITRES

SEPTIC TANK

WORKING CAPACITY: 22,039L TO INVERT OF OUTLET

TOTAL CAPACITY: 24,5464L TO UNDERSIDE OF CHAMBER LID