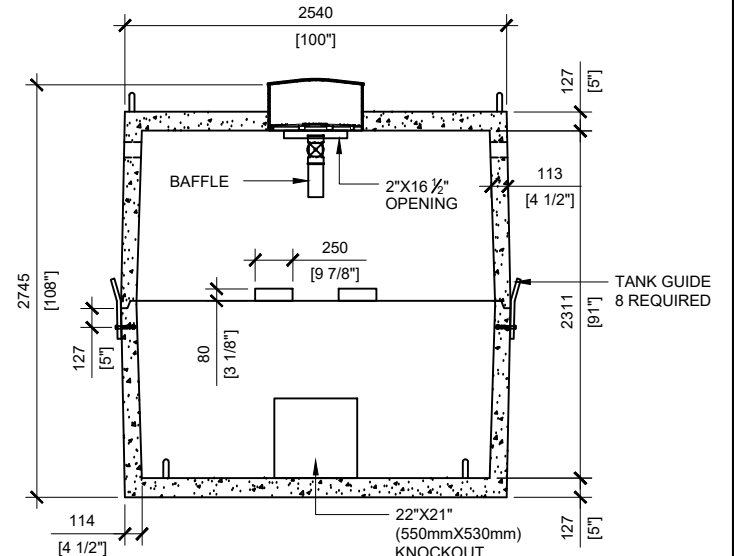
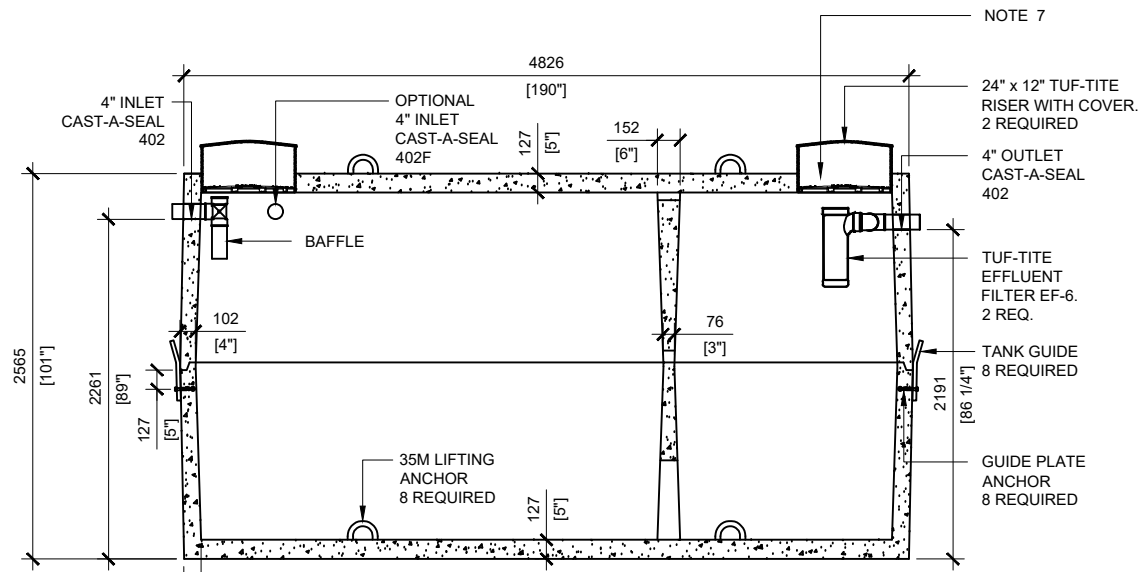


TOP VIEW  
SCALE: 1/50



SECTION B  
SCALE: 1/50



SECTION A  
SCALE: 1/50

**GENERAL NOTES:**

1. UNITS ARE SEALED WITH BUTYL TAPE AT THE JOINTS
2. CONTRACTOR TO ENSURE CRANE IS ON-SITE TO OFFLOAD AND SET TANK
3. EXCAVATION MUST BE READY FOR INSTALL
4. MIN OVERHEAD CLEARANCE OF 18FT (5.5 METRES) IS REQUIRED
5. ALL UNITS MUST BE HANDLED WITH PROPER LIFTING EQUIPMENT
6. MAXIMUM BURIAL DEPTH = 1 METRE IN FIRM SOIL AWAY FROM ANY VEHICULAR TRAFFIC
7. TUF-TITE SAFETY LIDS INSTALLED IN BOTH OPENINGS AS PER CSA-B66-21



MANUFACTURED:  
BROOKLIN, ON  
1-800-655-3430

CONCRETE: 40MPa at 28 days / 5,800PSI  
AIR ENTRAINMENT: 5-8%  
REINFORCEMENT: STEEL TO CSA CAN  
A23.1 /A23.3 G30.18 Fy=400MPa

WEIGHT: 39,254lbs / 17,843kg  
BOTTOM: 19,866lbs / 9,030kg  
TOP: 19,388lbs / 8,813kg  
CSA APPROVED  
"AGINP"

DRAWN BY:  
JAY PATEL

DATE:  
APRIL/2022

**22000 LITRES**

**SEPTIC TANK**

WORKING CAPACITY: 22,039L TO INVERT OF OUTLET

TOTAL CAPACITY: 24,5464L TO UNDERSIDE OF CHAMBER LID