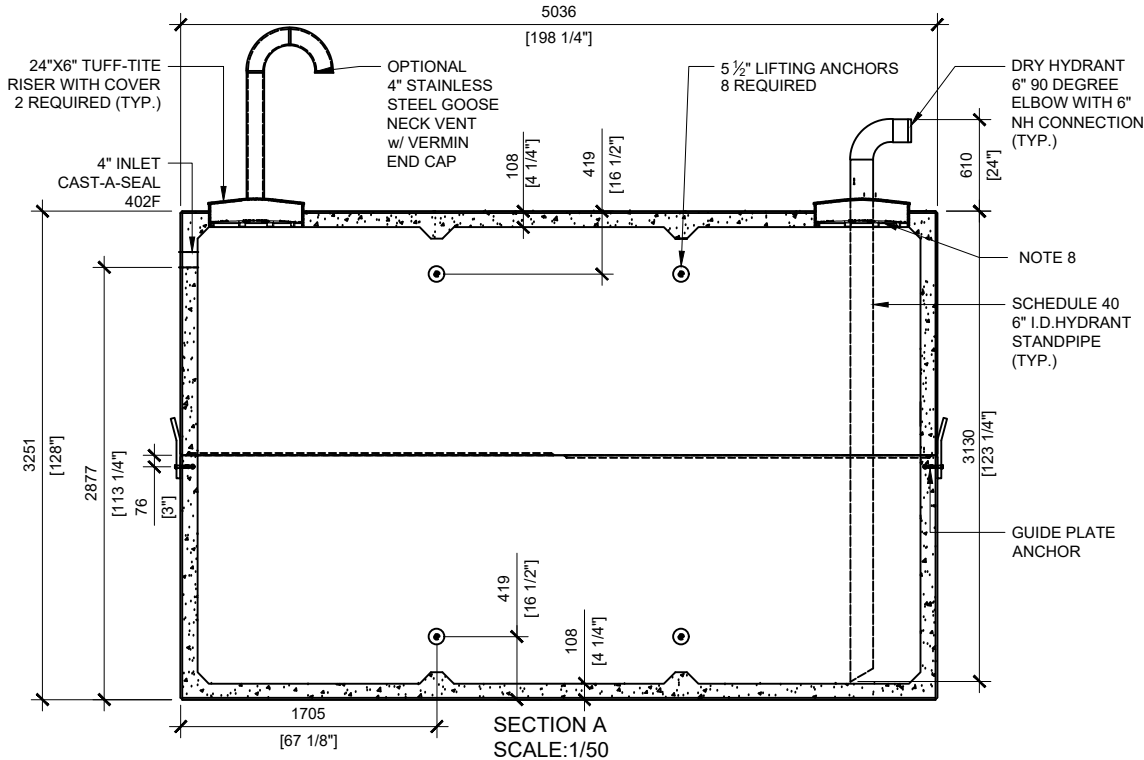
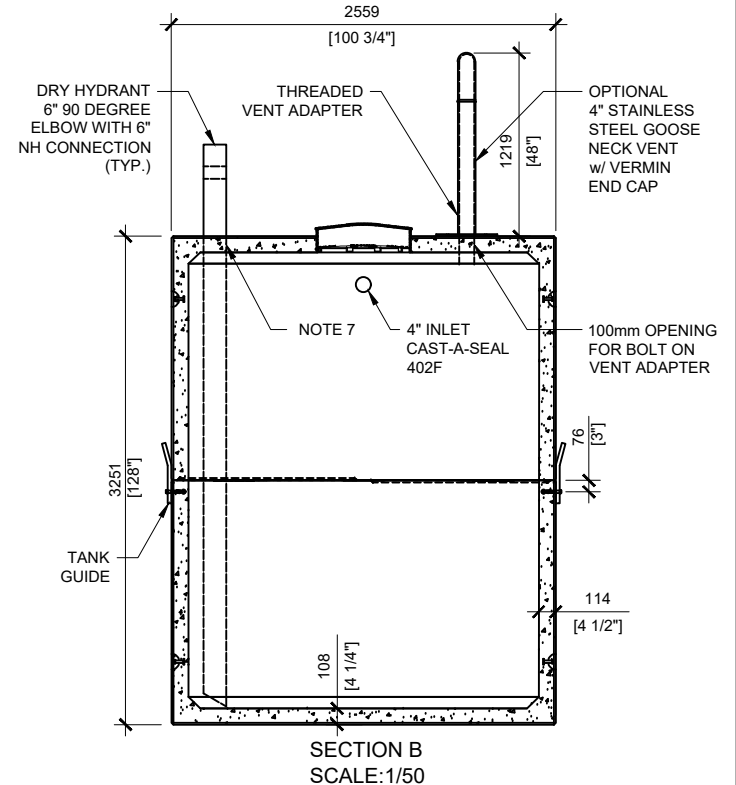


TOP VIEW
SCALE: 1/50



SECTION A
SCALE: 1/50



SECTION B
SCALE: 1/50

SINGLE FIRE WATER TANK

GENERAL NOTES:

1. UNITS ARE SEALED WITH BUTYL TAPE AT THE JOINTS
2. CONTRACTOR TO ENSURE CRANE IS ON-SITE TO OFFLOAD AND SET TANK
3. EXCAVATION MUST BE READY FOR INSTALL
4. MIN OVERHEAD CLEARANCE OF 18FT (5.5 METRES) IS REQUIRED
5. ALL UNITS MUST BE HANDLED WITH PROPER LIFTING EQUIPMENT
6. MAXIMUM BURIAL DEPTH = 1 METRE IN FIRM SOIL AWAY FROM ANY VEHICULAR TRAFFIC
7. SCHEDULE 80 FLANGE FOR DRY HYDRANT TO BE FITTED ON SITE
8. TUF-TITE SAFETY LID INSTALLED IN OPENING AS PER CSA-B66-21



MANUFACTURED:
LINDSAY, ON
1-800-655-3430

CONCRETE: 35MPa/5000PSI
AIR ENTRAINMENT: 5-8%
REINFORCEMENT: STEEL TO CSA CAN
A23.1 /A23.3 G30.18 Fy=400MPa

WEIGHT: 42,836lbs / 19,430kg
BOTTOM: 21,561lbs / 9,780kg
TOP: 21,275lbs / 9,650kg
CPA CERTIFIED
MEETS CAN/CSA-B66
"AGINP"

DRAWN BY:
PRASHAN

DATE:
NOV/2023

30000 LITRES

WORKING CAPACITY: 31,503L TO INVERT OF INLET
TOTAL CAPACITY: 33,926L TO UNDERSIDE OF CHAMBER LID