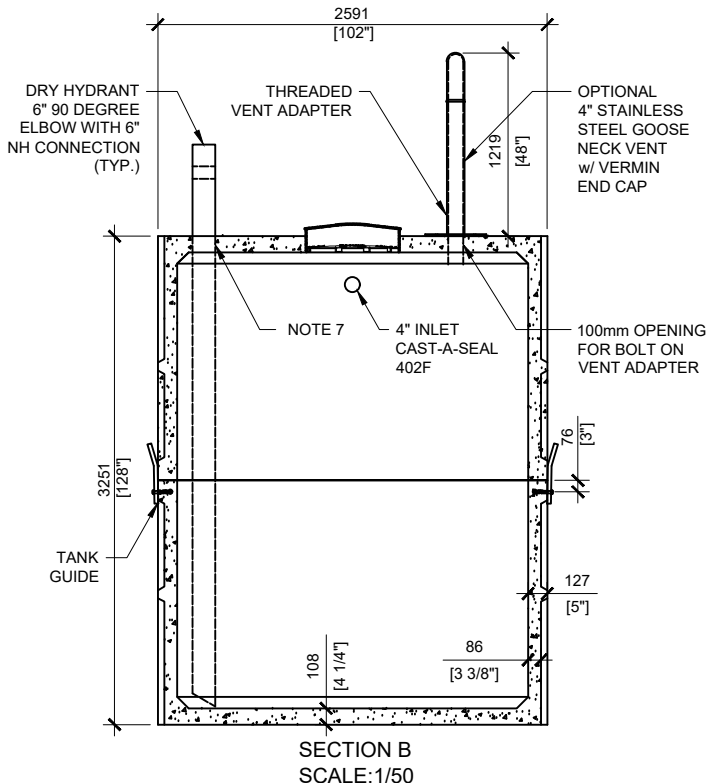
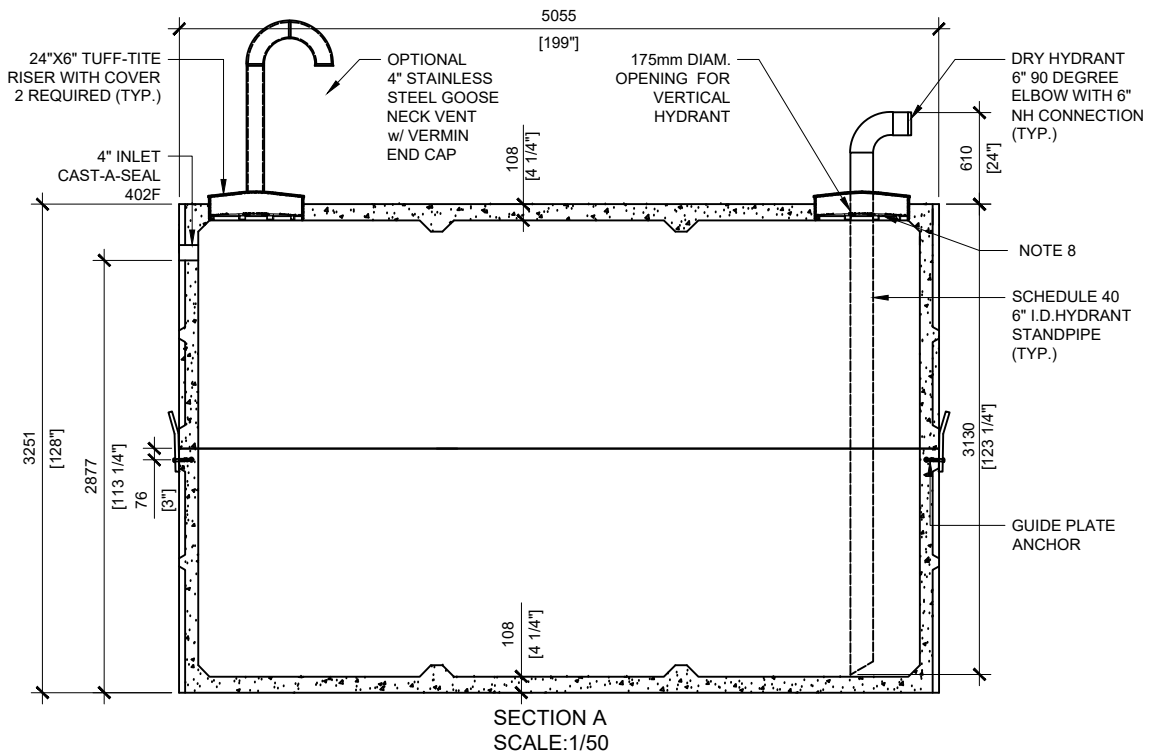


GENERAL NOTES:

1. UNITS ARE SEALED WITH BUTYL TAPE AT THE JOINTS
2. CONTRACTOR TO ENSURE CRANE IS ON-SITE TO OFFLOAD AND SET TANK
3. EXCAVATION MUST BE READY FOR INSTALL
4. MIN OVERHEAD CLEARANCE OF 18FT (5.5 METRES) IS REQUIRED
5. ALL UNITS MUST BE HANDLED WITH PROPER LIFTING EQUIPMENT
6. MAXIMUM BURIAL DEPTH = 1 METRE IN FIRM SOIL AWAY FROM ANY VEHICULAR TRAFFIC
7. SCHEDULE 80 FLANGE FOR DRY HYDRANT TO BE FITTED ON SITE
8. TUF-TITE SAFETY LID INSTALLED IN OPENING AS PER CSA-B66-21



SINGLE FIRE WATER TANK



MANUFACTURED:
BROOKLIN, ON
1-800-655-3430

CONCRETE: 35MPa/5000PSI
AIR ENTRAINMENT: 5-8%
REINFORCEMENT: STEEL TO CSA CAN
A23.1 /A23.3 G30.18 Fy=400MPa

WEIGHT: 41,623lbs / 18,919kg
BOTTOM: 21,380lbs / 9,718kg
TOP: 20,243lbs / 9,201kg
CPA CERTIFIED
MEETS CAN/CSA-B66
"AGINP"

DRAWN BY:
JAY PATEL

DATE:
APRIL/2022

30000 LITRES

WORKING CAPACITY: 31,503L TO INVERT OF INLET
TOTAL CAPACITY: 33,926L TO UNDERSIDE OF CHAMBER LID