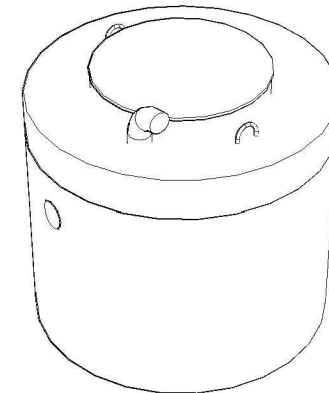
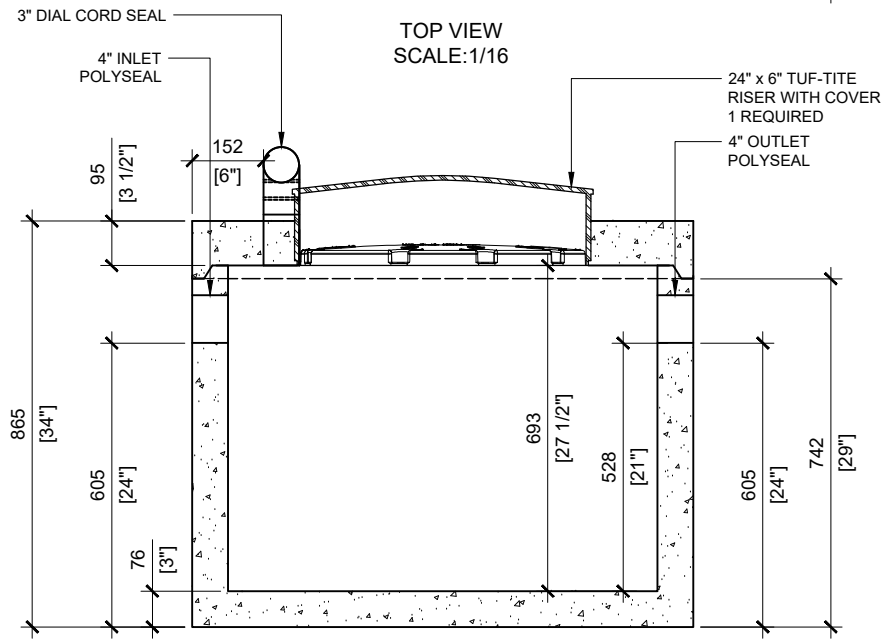


**GENERAL NOTES:**

1. BUTYL TAPE PROVIDED FOR CONTRACTOR TO SEAL CONCRETE LID
2. DELIVERY IS MADE BY CRANE-EQUIPPED TRUCKS
3. EXCAVATION MUST BE READY, SAFE AND ACCESSIBLE FOR UNLOADING FROM THE REAR OF THE TRUCK.
4. MIN OVERHEAD CLEARANCE OF 18FT (5.5 METRES) IS REQUIRED
5. ALL UNITS MUST BE HANDLED WITH PROPER LIFTING EQUIPMENT
6. MAXIMUM BURIAL DEPTH = 1 METRE IN FIRM SOIL AWAY FROM ANY VEHICULAR TRAFFIC
7. TUF-TITE SAFETY LID INSTALLED IN OPENING AS PER CSA-B66-21



SECTION A  
SCALE:1/16



**MANUFACTURED:**  
BROOKLIN, ON  
1-800-655-3430

**CONCRETE:** 35MPa/5000PSI  
**AIR ENTRAINMENT:** 5-8%  
**REINFORCEMENT:** STEEL TO CSA CAN  
A23.1 /A23.3 G30.18 Fy=400MPa

**WEIGHT:**  
1,550lbs / 702kg  
CPA CERTIFIED  
MEETS CAN/CSA-B66  
"AGINP"

**DRAWN BY:**  
JAY PATEL

**DATE:**  
MAR/2022

**300 LITRES**

**WORKING CAPACITY:** 350L TO INVERT OF INLET

**TOTAL CAPACITY:** 458L TO UNDERSIDE OF CHAMBER LID

**PUMP  
TANK**