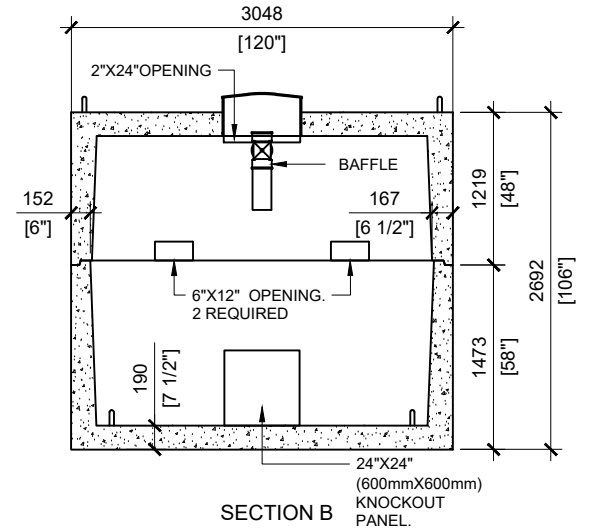
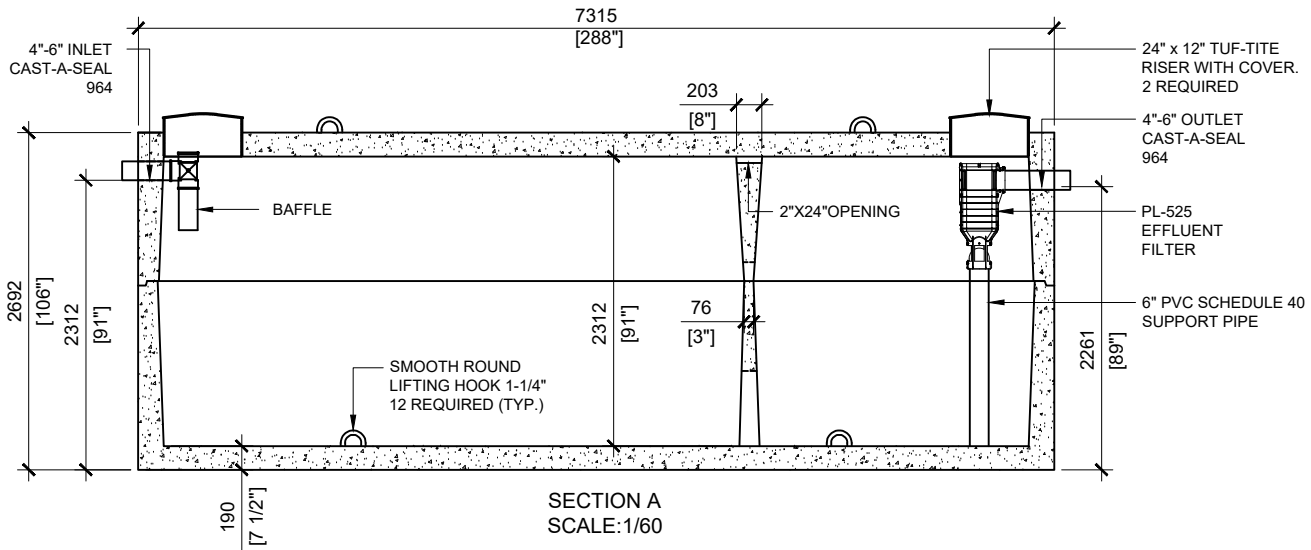


TOP VIEW
SCALE:1/60



SECTION B
SCALE:1/60



SECTION A
SCALE:1/60

GENERAL NOTES:

1. UNITS ARE SEALED WITH BUTYL TAPE AT THE JOINTS
2. CONTRACTOR TO ENSURE CRANE IS ON-SITE TO OFFLOAD AND SET TANK
3. EXCAVATION MUST BE READY FOR INSTALL
4. MIN OVERHEAD CLEARANCE OF 18FT (5.5 METRES) IS REQUIRED
5. ALL UNITS MUST BE HANDLED WITH PROPER LIFTING EQUIPMENT
6. TANK DESIGNED FOR A MAXIMUM FILL COVER DEPTH OF 1000mm, WITH 4.8 kPa LIVE LOAD, AND NO VEHICLE LOADING

* AVAILABLE FOR TRAFFIC LOADING



MANUFACTURED:
OTTAWA, ON
1-800-655-3430

CONCRETE TYPE: SCC
CONCRETE: 45MPa at 28 days / 6,500PSI
AIR ENTRAINMENT: 5-8%
REINFORCEMENT: STEEL TO CSA CAN
 A23.1 /A23.3 G30.18 Fy=400MPa

WEIGHT:
 BOTTOM - 50,442lbs / 22,928kg
 TOP - 43,592lbs / 19,815kg
CSA APPROVED
 MEETS CAN/CSA-B66
 "AGINP"

DRAWN BY:
N.CHAN

DATE:
FEB/2020

36300 LITRES
8,000 IMPERIAL GALLON

SEPTIC TANK

WORKING CAPACITY: 37690L TO INVERT OF OUTLET
TOTAL CAPACITY: 42444L TO UNDERSIDE OF CHAMBER LID