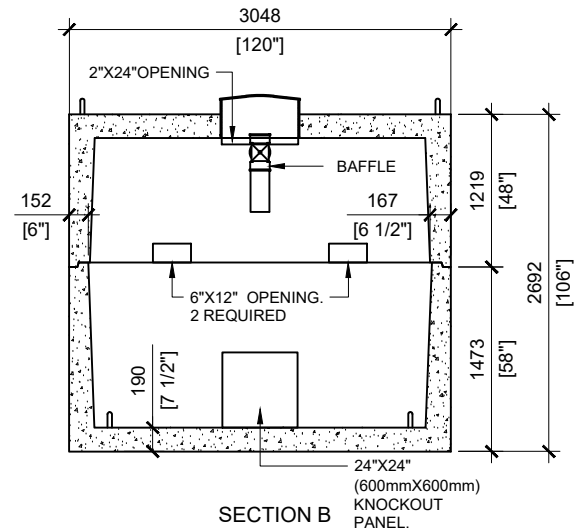
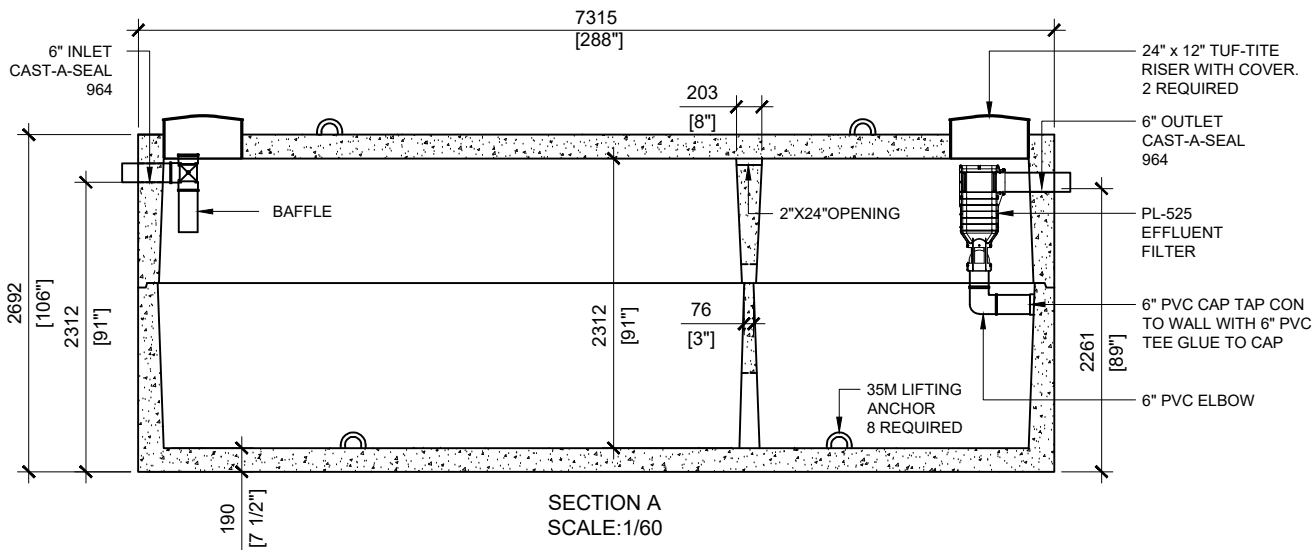


TOP VIEW
SCALE:1/60



SECTION B
SCALE:1/60



SECTION A
SCALE:1/60

GENERAL NOTES:

1. UNITS ARE SEALED WITH BUTYL TAPE AT THE JOINTS
2. CONTRACTOR TO ENSURE CRANE IS ON-SITE TO OFFLOAD AND SET TANK
3. EXCAVATION MUST BE READY FOR INSTALL
4. MIN OVERHEAD CLEARANCE OF 18FT (5.5 METRES) IS REQUIRED
5. ALL UNITS MUST BE HANDLED WITH PROPER LIFTING EQUIPMENT
6. TANK DESIGNED FOR A MAXIMUM FILL COVER DEPTH OF 1000mm, NO MINIMUM FILL COVER DEPTH, AND 12 kPa VEHICLE LOADING.



MANUFACTURED:
OTTAWA, ON
1-800-655-3430

CONCRETE: 45MPa at 28 days / 6,500PSI
AIR ENTRAINMENT: 5-8%
REINFORCEMENT: STEEL TO CAS CAN
A23.1 / A23.3 G30.14-M1983

WEIGHT: 35,450lbs / 16,100kg (TOP)
48,500lbs / 22,000kg (BOTTOM)
CSA APPROVED
MEETS CAN/CSA-B66
"AGINP"

DRAWN BY:
N.CHAN

DATE:
FEB/2020

36300 LITRES
8,000 IMPERIAL GALLON

SEPTIC TANK

WORKING CAPACITY: 37,527L TO INVERT OF OUTLET

TOTAL CAPACITY: 38,890L TO UNDERSIDE OF CHAMBER LID