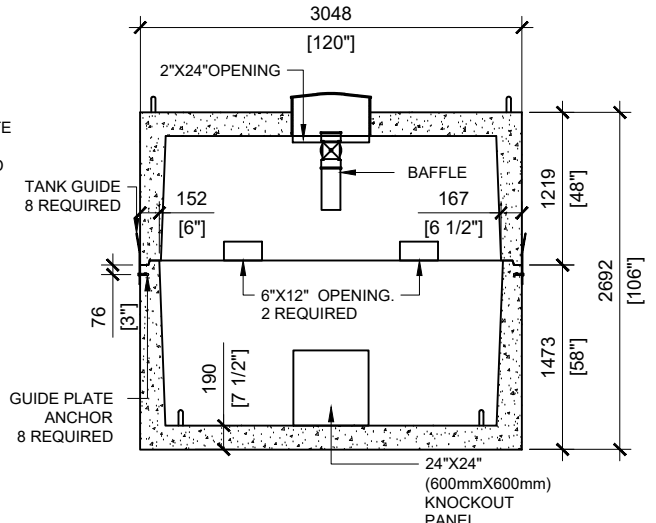
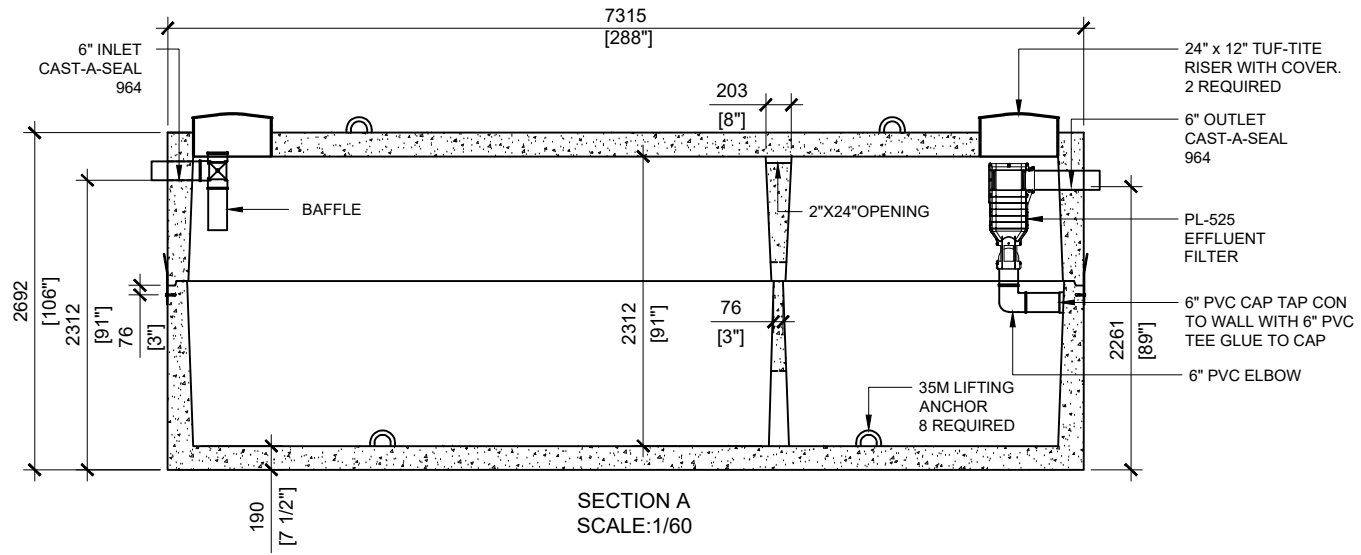


TOP VIEW
SCALE:1/60



SECTION B
SCALE:1/60



SECTION A
SCALE:1/60

- GENERAL NOTES:**
1. UNITS ARE SEALED WITH BUTYL TAPE AT THE JOINTS
 2. CONTRACTOR TO ENSURE CRANE IS ON-SITE TO OFFLOAD AND SET TANK
 3. EXCAVATION MUST BE READY FOR INSTALL
 4. MIN OVERHEAD CLEARANCE OF 18FT (5.5 METRES) IS REQUIRED
 5. ALL UNITS MUST BE HANDLED WITH PROPER LIFTING EQUIPMENT
 6. TANK DESIGNED FOR A MAXIMUM FILL COVER DEPTH OF 1000mm, NO MINIMUM FILL COVER DEPTH, AND 12 kPa VEHICLE LOADING.



MANUFACTURED:
OTTAWA, ON
1-800-655-3430

CONCRETE: 40MPa / 5,800PSI
AIR ENTRAINMENT: 5-8%
MEETS CAN/CSA-B66
REINFORCEMENT: MEETS G30.14-M1983

CSA APPROVED
WEIGHT: 35,450lbs / 16,100kg (TOP)
48,500lbs / 22,000kg (BOTTOM)
"AGINP"

DRAWN BY:
N.CHAN

DATE:
MAR/2021

37500 LITRES

SEPTIC TANK

WORKING CAPACITY: 37,690L TO INVERT OF OUTLET
TOTAL CAPACITY: 42,444L TO UNDERSIDE OF CHAMBER LID