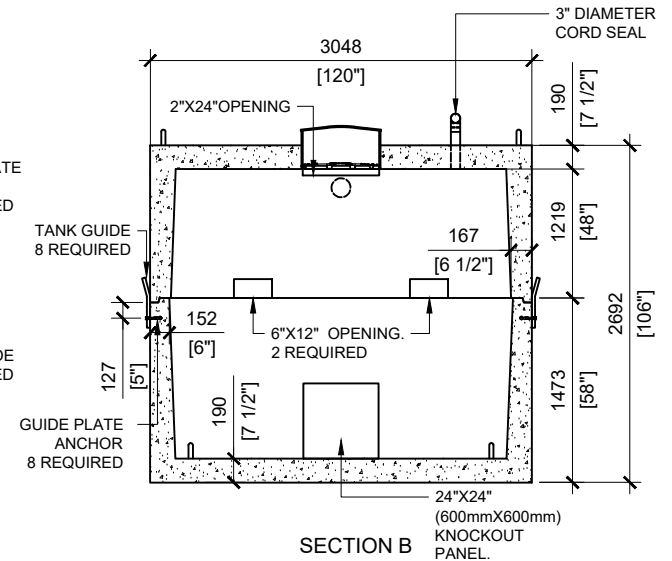
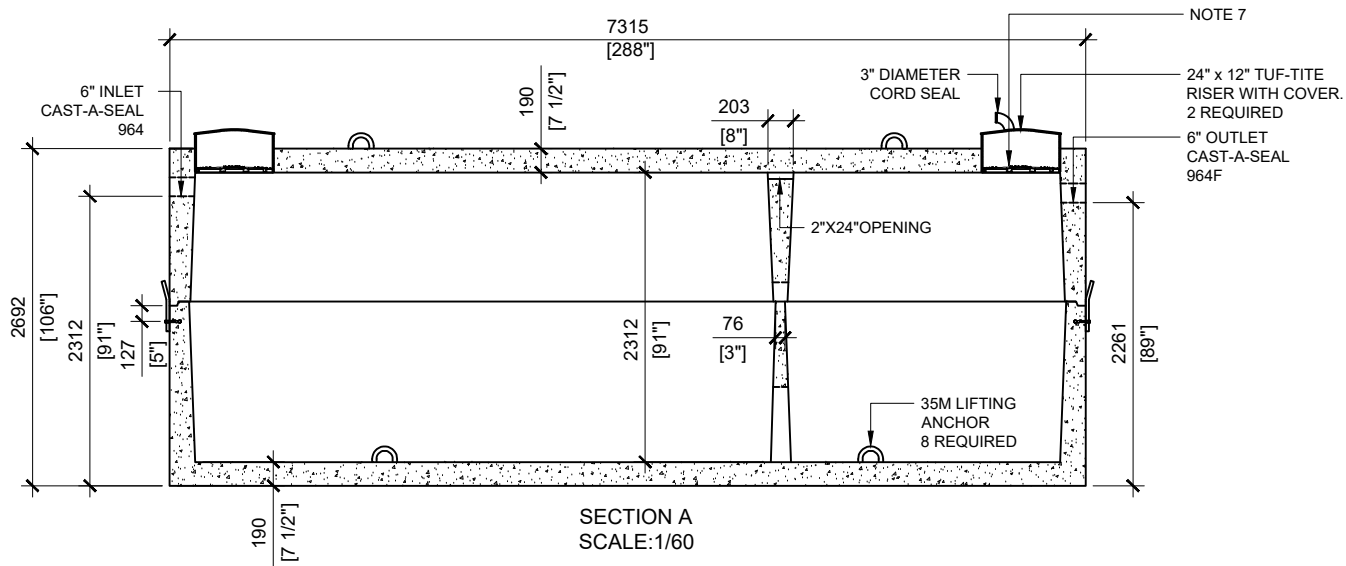


TOP VIEW
SCALE:1/60



SECTION B
SCALE:1/60



SECTION A
SCALE:1/60

GENERAL NOTES:

1. UNITS ARE SEALED WITH BUTYL TAPE AT THE JOINTS
2. CONTRACTOR TO ENSURE CRANE IS ON-SITE TO OFFLOAD AND SET TANK
3. EXCAVATION MUST BE READY FOR INSTALL
4. MIN OVERHEAD CLEARANCE OF 18FT (5.5 METRES) IS REQUIRED
5. ALL UNITS MUST BE HANDLED WITH PROPER LIFTING EQUIPMENT
6. TANK DESIGNED FOR A MAXIMUM FILL COVER DEPTH OF 1000mm, NO MINIMUM FILL COVER DEPTH, AND 12 kPa VEHICLE LOADING.
7. TUF-TITE SAFETY LIDS INSTALLED IN BOTH OPENINGS AS PER CSA-B66-21



MANUFACTURED:
OTTAWA, ON
1-800-655-3430

CONCRETE: 40MPa / 5,800PSI
AIR ENTRAINMENT: 5-8%
MEETS CAN/CSA-B66
REINFORCEMENT: MEETS G30.14-M1983

CSA APPROVED
WEIGHT: 35,450lbs / 16,100kg (TOP)
48,500lbs / 22,000kg (BOTTOM)
"AGINP"

DRAWN BY:
JAY PATEL

DATE:
APRIL/2022

37500 LITRES SINGLE CHAMBER

WORKING CAPACITY: 39,117L TO INVERT OF INLET
TOTAL CAPACITY: 42,507L TO UNDERSIDE OF CHAMBER LID