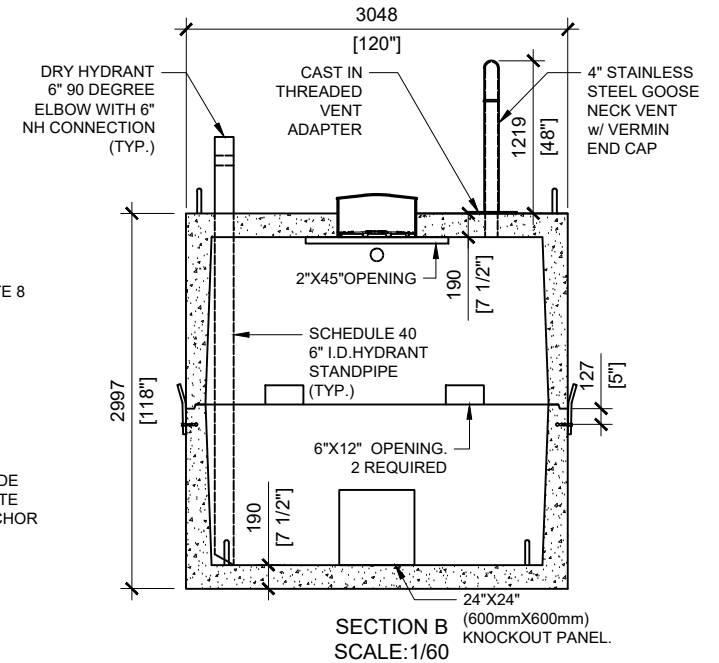
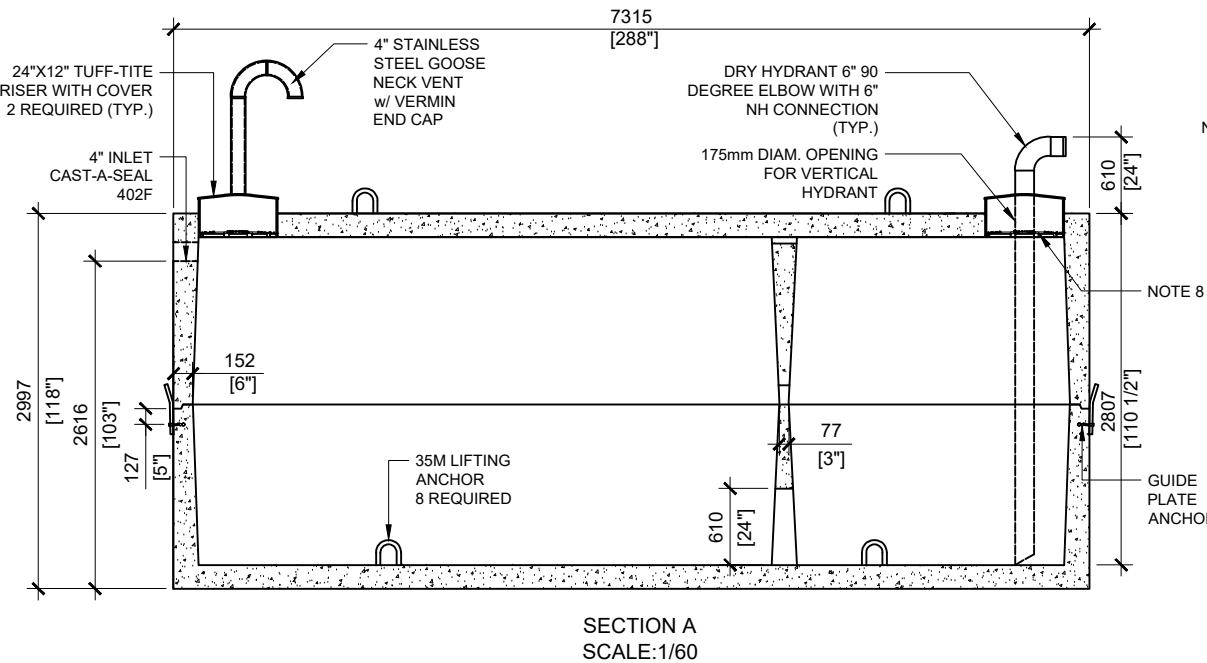


GENERAL NOTES:

1. UNITS ARE SEALED WITH BUTYL TAPE AT THE JOINTS
2. CONTRACTOR TO ENSURE CRANE IS ON-SITE TO OFFLOAD AND SET TANK
3. EXCAVATION MUST BE READY FOR INSTALL
4. MIN OVERHEAD CLEARANCE OF 18FT (5.5 METRES) IS REQUIRED
5. ALL UNITS MUST BE HANDLED WITH PROPER LIFTING EQUIPMENT
6. TANK DESIGNED FOR A MAXIMUM FILL COVER DEPTH OF 1000mm, WITH 4.8 kPa LIVE LOAD, AND NO VEHICLE LOADING
7. SCHEDULE 80 FLANGE FOR DRY HYDRANT TO BE FITTED ON SITE
8. TUF-TITE SAFETY LID INSTALLED IN OPENING AS PER CSA-B66-21

* AVAILABLE FOR TRAFFIC LOADING



SINGLE FIRE WATER TANK



MANUFACTURED:
OTTAWA, ON
1-800-655-3430

CONCRETE TYPE: SCC
CONCRETE: 45MPa at 28 days / 6,500PSI
AIR ENTRAINMENT: 5-8%
REINFORCEMENT: STEEL TO CSA CAN
A23.1 /A23.3 G30.18 Fy=400MPa

WEIGHT:
BOTTOM - 49,416lbs / 22,462kg
TOP - 50,845lbs / 23,111kg
CSA APPROVED
MEETS CAN/CSA-B66
"AGINP"

DRAWN BY:
JAY PATEL

DATE:
APRIL/2022

43500 LITRES

WORKING CAPACITY: 44,717L TO INVERT OF INLET
TOTAL CAPACITY: 48,129L TO UNDERSIDE OF CHAMBER LID