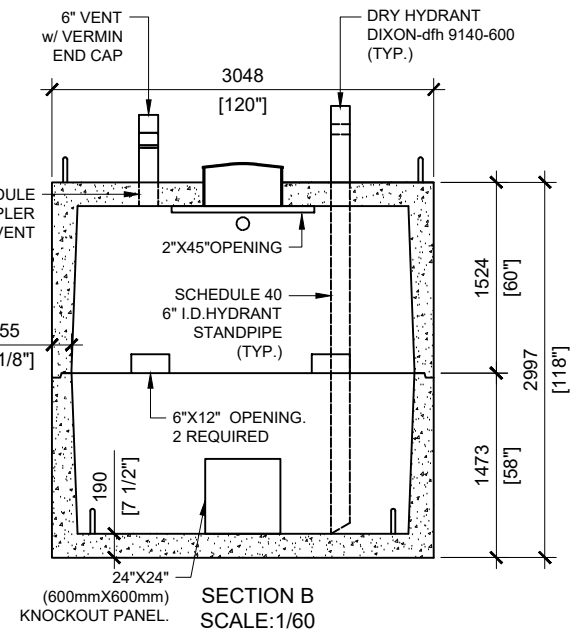
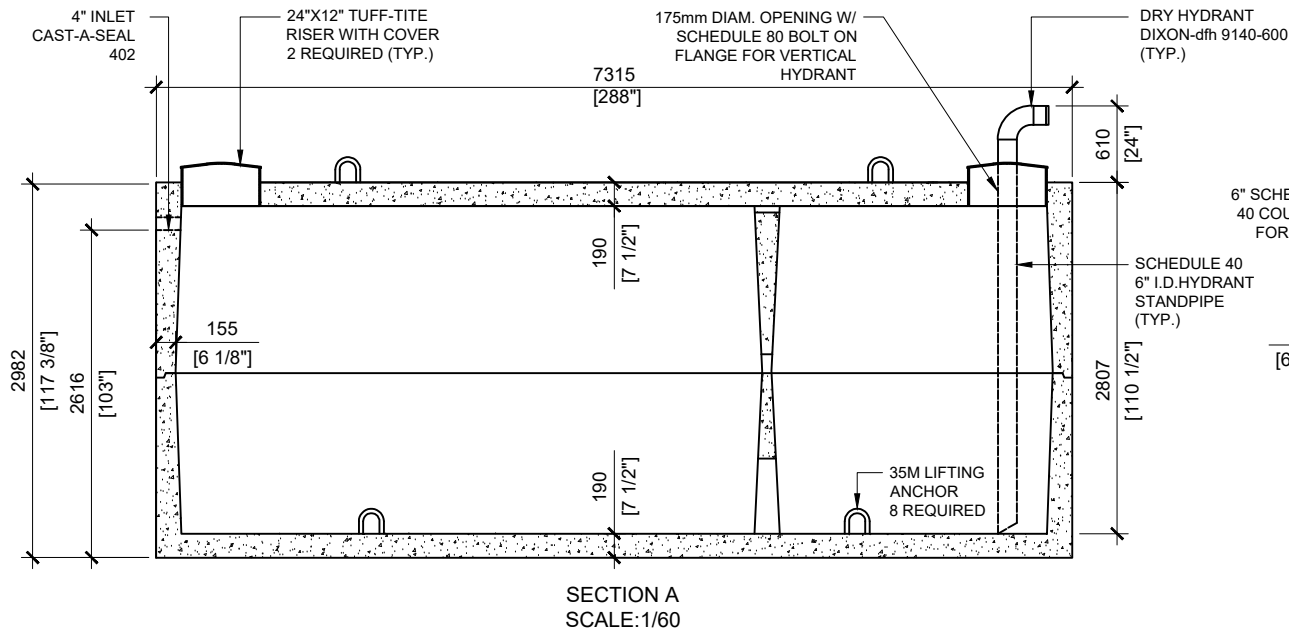


GENERAL NOTES:

1. UNITS ARE SEALED WITH BUTYL TAPE AT THE JOINTS
2. CONTRACTOR TO ENSURE CRANE IS ON-SITE TO OFFLOAD AND SET TANK
3. EXCAVATION MUST BE READY FOR INSTALL
4. MIN OVERHEAD CLEARANCE OF 18FT (5.5 METRES) IS REQUIRED
5. ALL UNITS MUST BE HANDLED WITH PROPER LIFTING EQUIPMENT
6. TANK DESIGNED FOR A MAXIMUM FILL COVER DEPTH OF 1000mm, NO MINIMUM FILL COVER DEPTH, AND 12 kPa VEHICLE LOADING.



SINGLE FIRE WATER TANK



MANUFACTURED:
OTTAWA, ON
1-800-655-3430

CONCRETE: 45MPa at 28 days/ 6,500PSI
AIR ENTRAINMENT: 5-8%
REINFORCEMENT: STEEL TO CSA CAN A23.1 /A23.3 G30.18 Fy=400MPa

WEIGHT: 48,500lbs / 22,000kg (TOP)
48,500lbs / 22,000kg (BOTTOM)
CSA APPROVED
MEETS CAN/CSA-B66
"AGINP"

DRAWN BY:
N.CHAN

DATE:
FEB/2020

45500 LITRES
10000 IMPERIAL GALLON

10,000 IMPERIAL GALLON / 45,500 LITRES