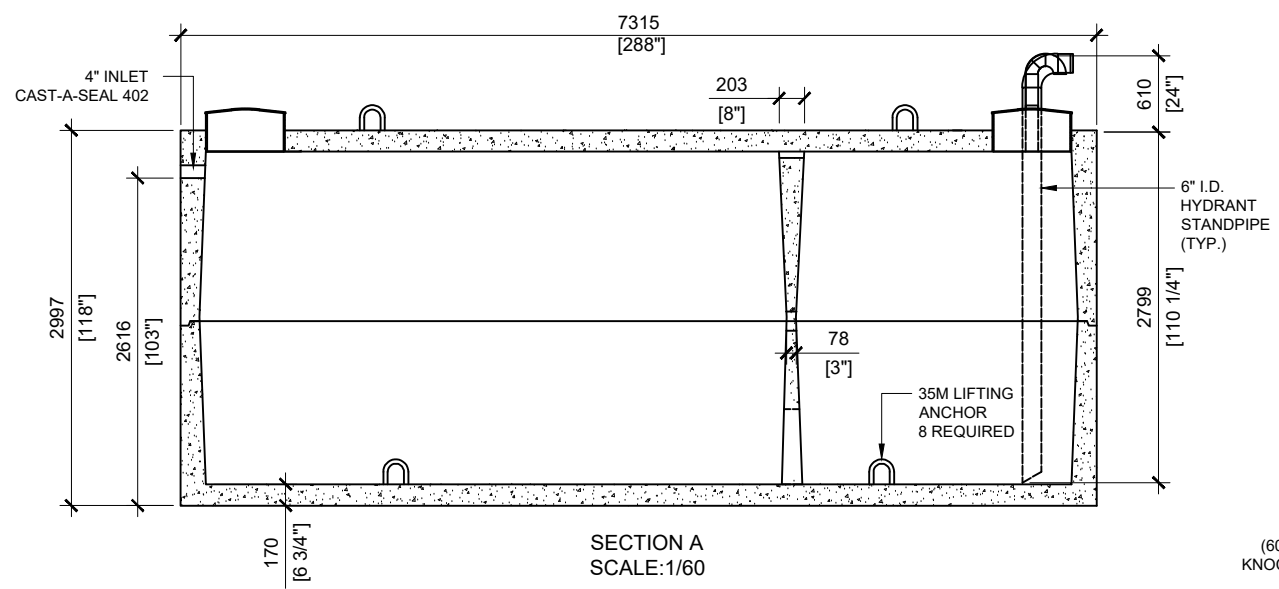
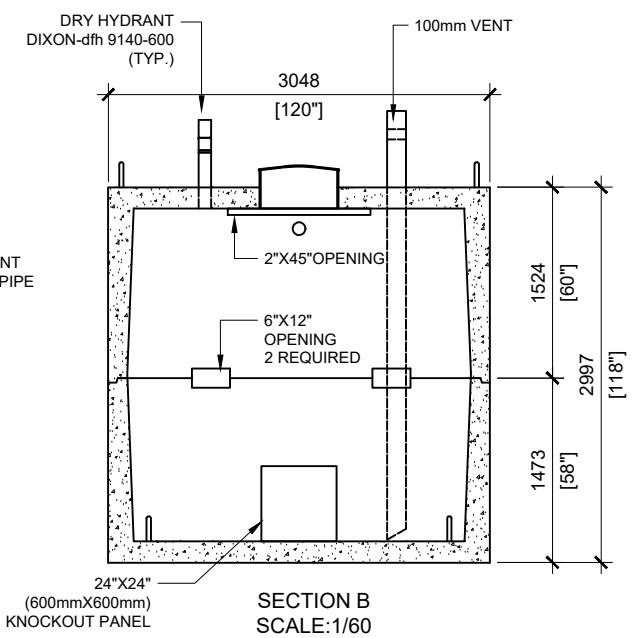


TOP VIEW  
SCALE:1/60

- GENERAL NOTES:**
1. UNITS ARE SEALED WITH BUTYL TAPE AT THE JOINTS
  2. CONTRACTOR TO ENSURE CRANE IS ON-SITE TO OFFLOAD AND SET TANK
  3. EXCAVATION MUST BE READY FOR INSTALL
  4. MIN OVERHEAD CLEARANCE OF 18FT IS REQUIRED
  5. ALL UNITS MUST BE HANDLED WITH PROPER LIFTING EQUIPMENT
  6. MAXIMUM BURIAL DEPTH = 1 METRE IN FIRM SOIL AWAY FROM ANY VEHICULAR TRAFFIC



SECTION A  
SCALE:1/60



SECTION B  
SCALE:1/60

**\*SINGLE FIRE WATER TANK\***



MANUFACTURED:  
OTTAWA, ON  
1-800-655-3430

CONCRETE: 45MPa / 6,500PSI  
AIR ENTRAINMENT: 6-8%  
REINFORCEMENT: MEETS G30.14-M1983

CSA APPROVED  
WEIGHT: 48,500lbs / 22,000kg (TOP)  
48,500lbs / 22,000kg (BOTTOM)  
MEETS CAN/CSA-B66

DRAWN BY:  
S.RIMLAND

DATE:  
JAN/2019

**45,500 LITRES**  
10,000 IMPERIAL GALLON

WORKING CAPACITY: 47,367L TO INVERT OF INLET  
TOTAL CAPACITY: 47,994L TO UNDERSIDE OF CHAMBER LID