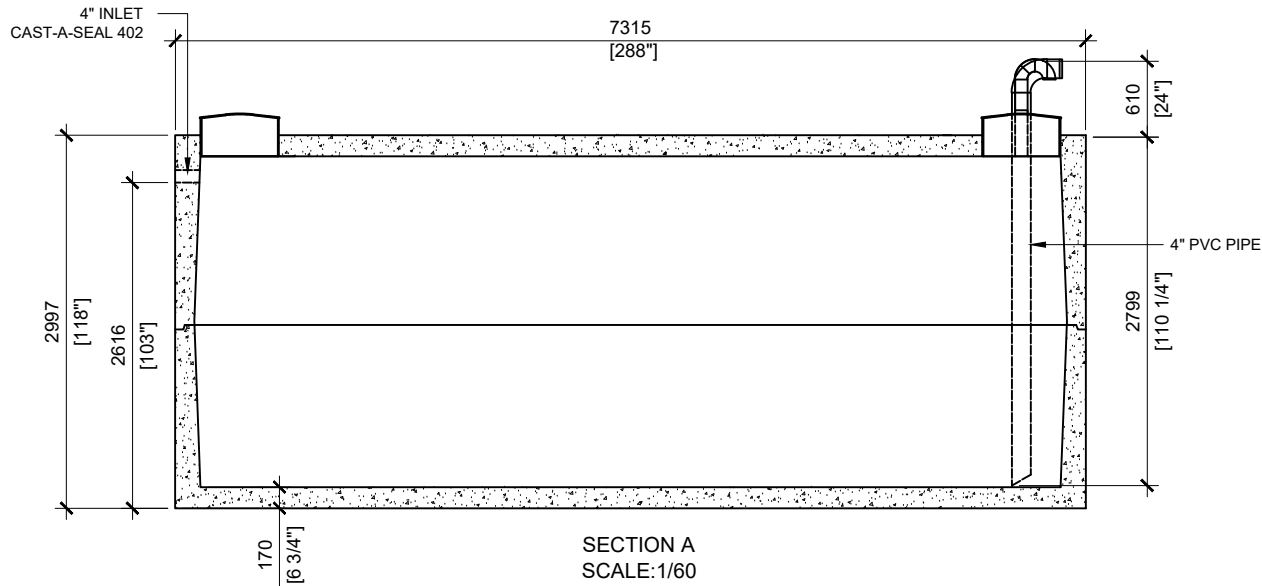


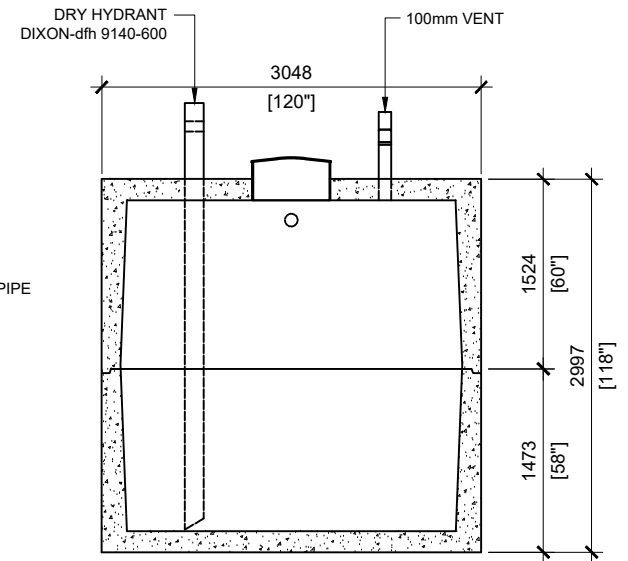
TOP VIEW  
SCALE: 1/60

**GENERAL NOTES:**

1. CONCRETE TO BE 45MPa/6,500 P.S.I.
2. MAXIMUM BURIAL DEPTH = 1 METRE IN FIRM SOIL AWAY FROM ANY VEHICULAR TRAFFIC



SECTION A  
SCALE: 1/60



SECTION B  
SCALE: 1/60

**\*SINGLE FIRE WATER TANK\***



MANUFACTURED:  
OTTAWA, ON  
1-800-655-3430

CONCRETE: 45MPa / 6,500PSI  
AIR ENTRAINMENT: 6-8%  
MEETS CAN/CSA-B66-00  
REINFORCEMENT: MEETS G30.14-M1983

CSA APPROVED  
WEIGHT: 47,000lbs / 21,000kg (TOP)  
47,000lbs / 21,000kg (BOTTOM)

DRAWN BY:  
S.RIMLAND

DATE:  
JAN/2018

**45500 LITRES**  
10000 IMPERIAL GALLON

10,000 IMPERIAL GALLON / 45,500 LITRES