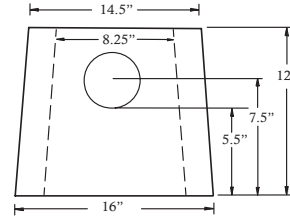


DRIVEWAY CATCHBASIN



Wt. 363kg/800lbs.

6' 6" L x 16" W x 12" H
c/w grate and 4" drain holes



18" RESIDENTIAL CATCHBASIN

CONSTRUCTION SPECIFICATIONS

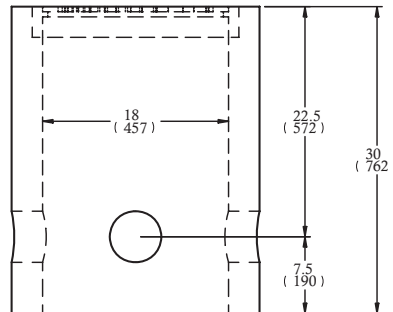
Wt. 280kg/600lbs

Concrete Properties

4500 PSI (32 MPa) Min Strength, 6-8% Air Entrainment

Not designed for direct vehicle loading

Complete with steel grate and 4" knockouts



24" CATCHBASINS

Concrete Properties

4500 PSI (32 MPa) Min Strength, 6-8% Air Entrainment

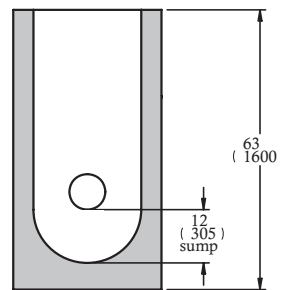
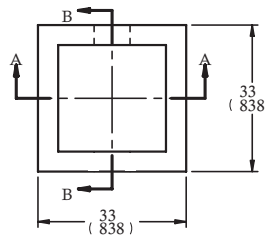
1. Overall height available at 63", 48", 42"
2. Stock units contain 12" sumps
3. Pipe knockouts available in 8", 13", 16" diameter
4. Custom placement of pipe knockouts upon request

Unit Weights (approx.):

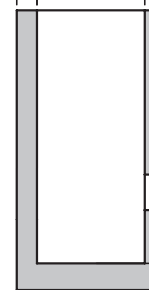
63" - 1433kg/3160lbs

48" - 1134kg/2500lbs

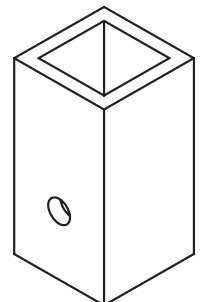
42" - 896kg/1975lbs



SECTION A-A

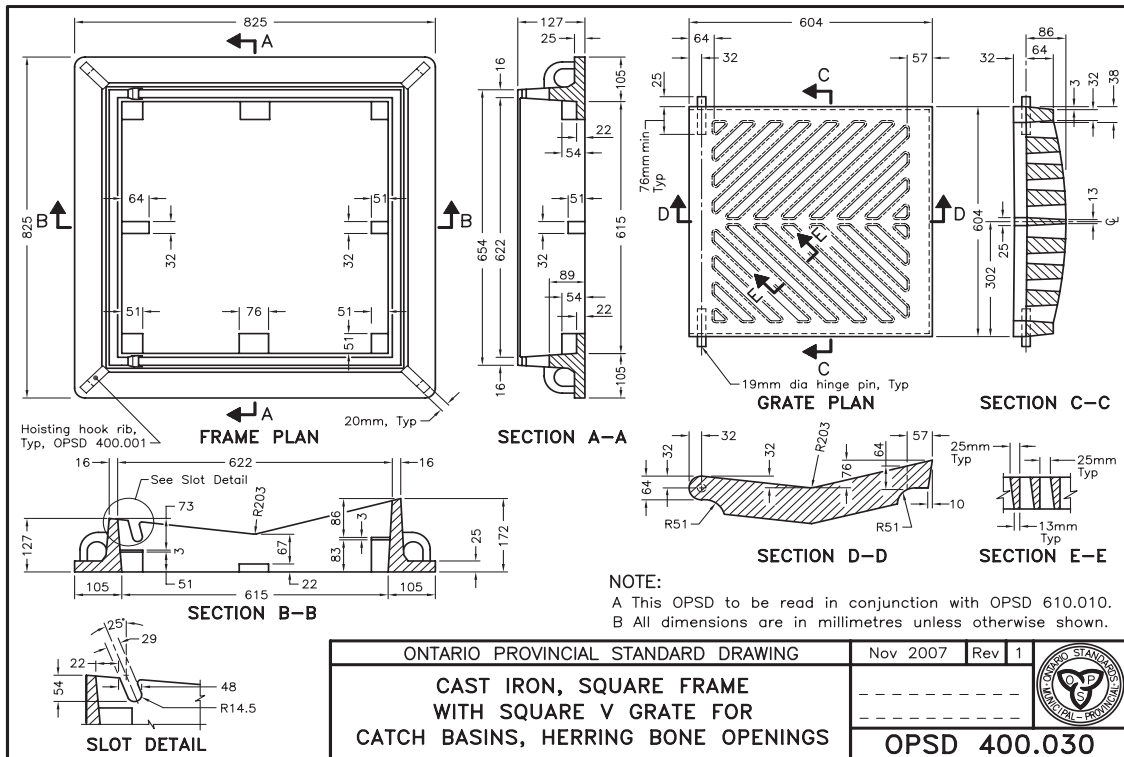
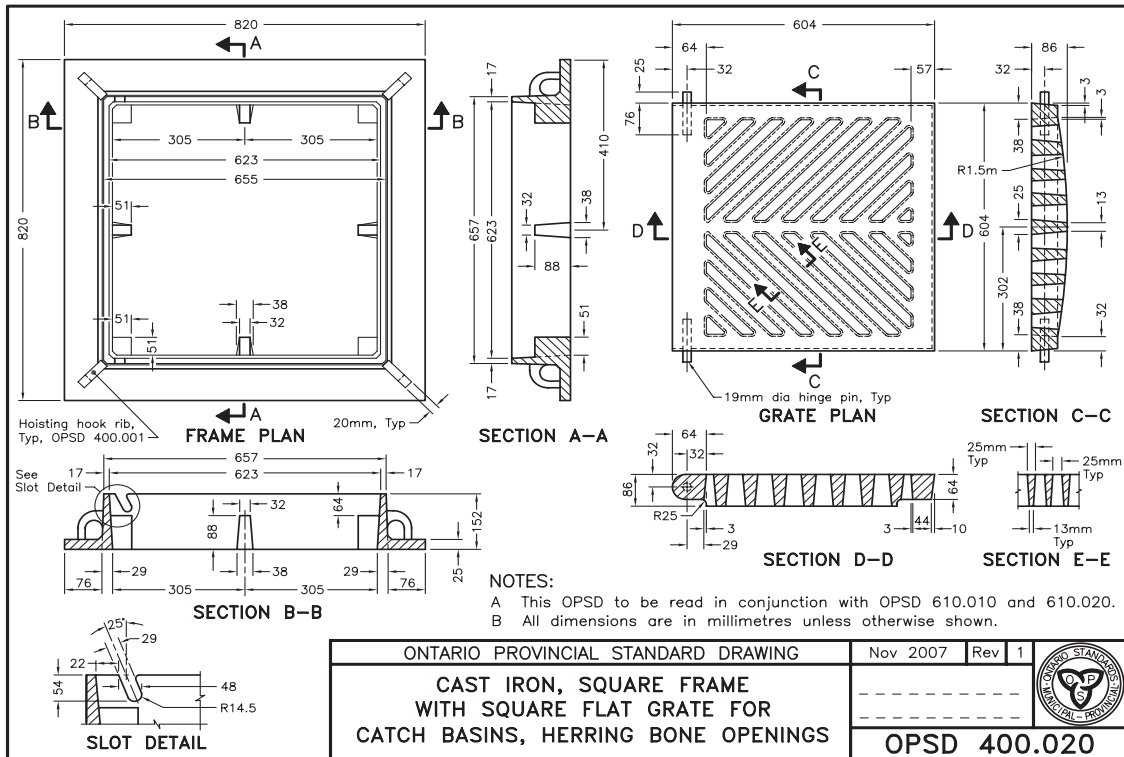


SECTION B-B



Typical use would include a 6" flat bikeproof cast iron frame & cover (OPSD 400.02) available upon request

6in (152) (mm)



BROOKLIN OFFICE
brooklinsales@brooklin.com

6760 Baldwin Street,
 Brooklin, ON, Canada L1M 1X8

T: 905-655-3311 | 1-800-655-3430
 F: 905-655-3847

NEWMARKET OFFICE
newmarketsales@brooklin.com

18599 Yonge Street North,
 East Gwillimbury, ON, Canada L9N 0J1

T: 905-895-2373 | 1-888-407-6443
 F: 905-898-3264

HUNTSVILLE / HALIBURTON OFFICE
huntsvillesales@brooklin.com

21 Stephenson Road 12 (East of Hwy 11),
 Huntsville, ON, Canada P1H 2K8

T: 705-789-2338 | 1-800-264-3302
 F: 705-789-9829