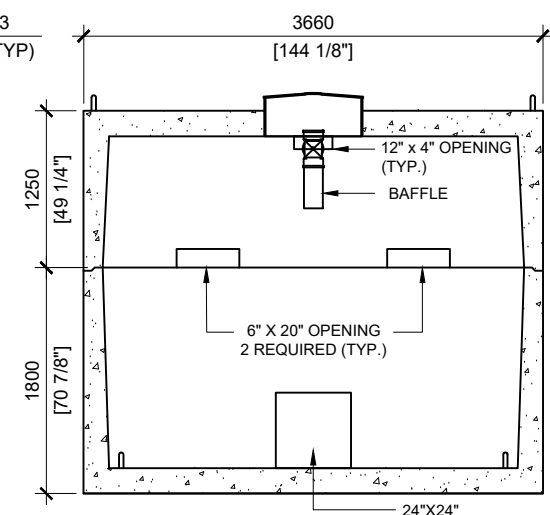
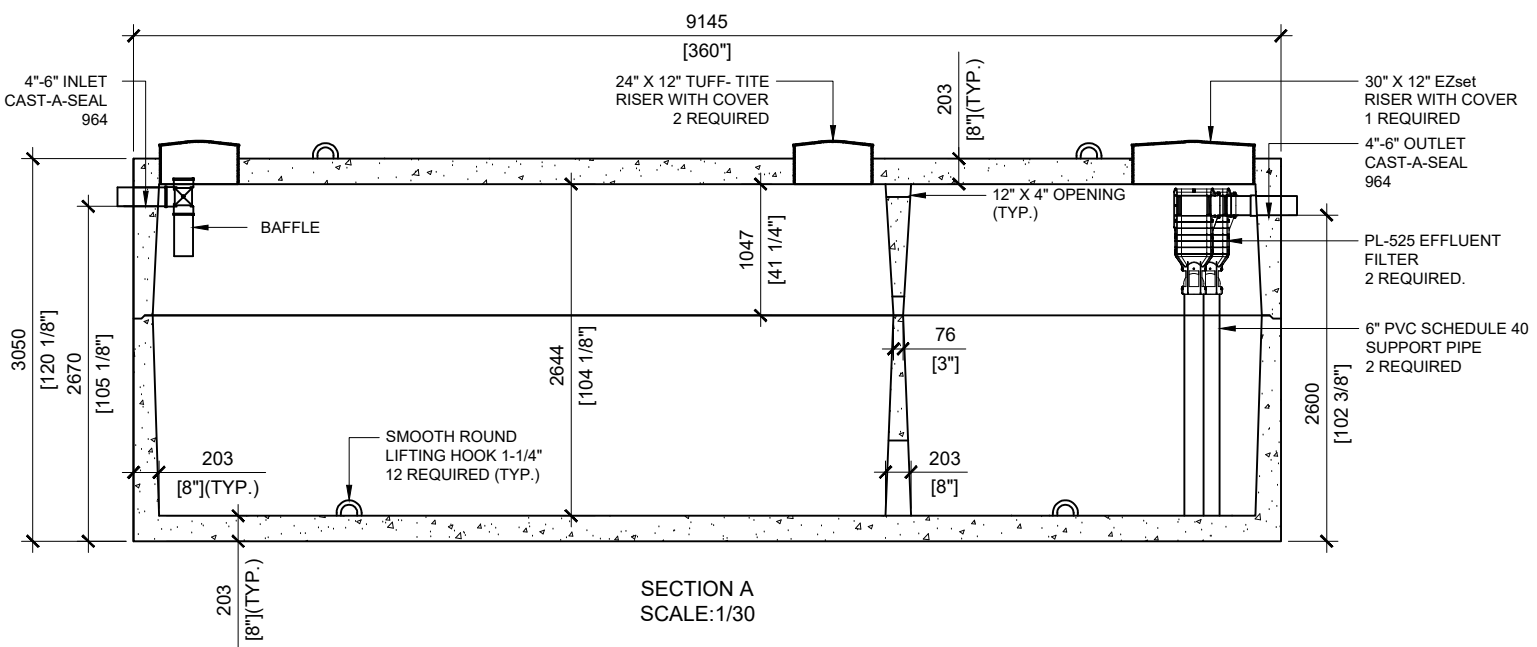


TOP VIEW
SCALE: 1/30



SECTION B
SCALE: 1/30



SECTION A
SCALE: 1/30

GENERAL NOTES:

1. UNITS ARE SEALED WITH BUTYL TAPE AT THE JOINTS
2. CONTRACTOR TO ENSURE CRANE IS ON-SITE TO OFFLOAD AND SET TANK
3. EXCAVATION MUST BE READY FOR INSTALL
4. MIN OVERHEAD CLEARANCE OF 18FT (5.5 METRES) IS REQUIRED
5. ALL UNITS MUST BE HANDLED WITH PROPER LIFTING EQUIPMENT
6. TANK DESIGNED FOR A MAXIMUM FILL COVER DEPTH OF 1000mm, NO MINIMUM FILL COVER DEPTH, AND 12 kPa VEHICLE LOADING.

* TANKS SUITABLE FOR TRAFFIC LOADING



MANUFACTURED:
OTTAWA, ON
1-800-655-3430

CONCRETE TYPE: SCC
 CONCRETE: 45MPa at 28 days / 6,500PSI
 AIR ENTRAINMENT: 5-8%
 REINFORCEMENT: STEEL TO CSA CAN
 A23.1 /A23.3 G30.18 Fy=400MPa

WEIGHT:
 BOTTOM - 77,942lbs / 35,428kg
 TOP - 63,192lbs / 28,724kg
 CSA APPROVED
 MEETS CAN/CSA-B66
 "AGINP"

DRAWN BY:
N.CHAN

DATE:
FEB/2020

68200 LITRES
15000 IMPERIAL GALLON

WORKING CAPACITY: 68703L TO INVERT OF OUTLET
 TOTAL CAPACITY: 75616L TO UNDERSIDE OF CHAMBER LID

SEPTIC TANK