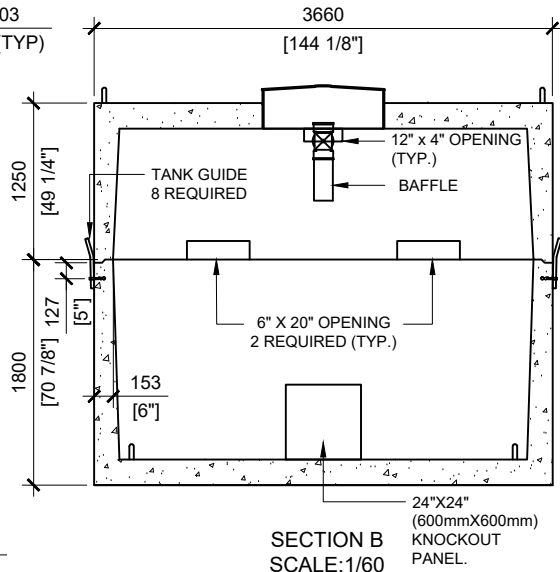
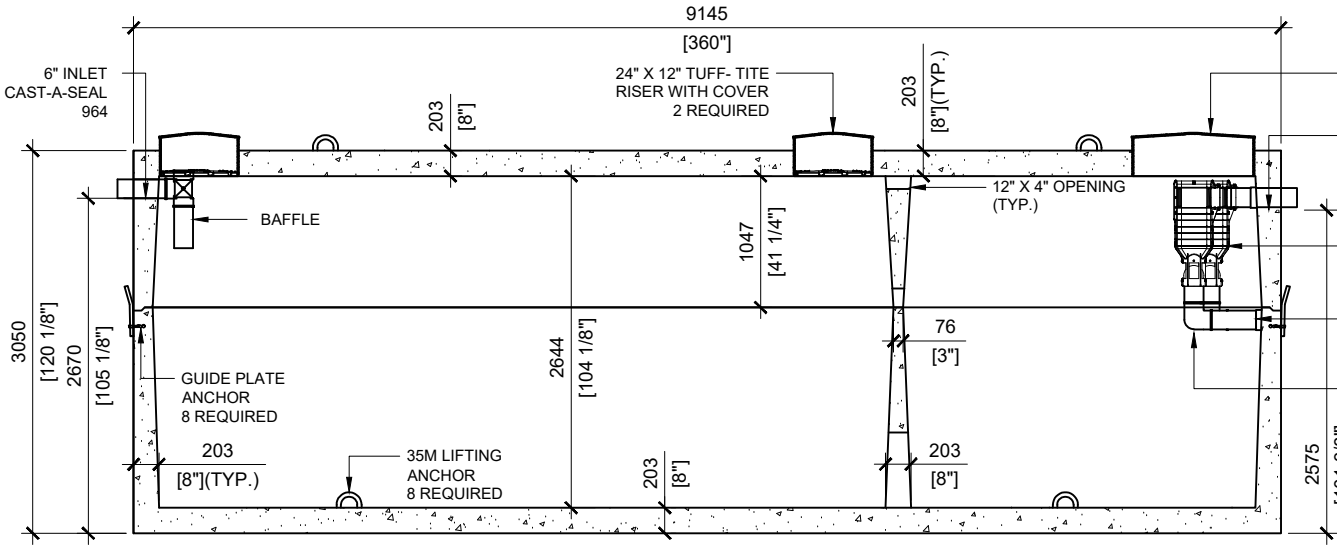


TOP VIEW  
SCALE: 1/60



SECTION B  
SCALE: 1/60



SECTION A  
SCALE: 1/60

- GENERAL NOTES:**
1. UNITS ARE SEALED WITH BUTYL TAPE AT THE JOINTS
  2. CONTRACTOR TO ENSURE CRANE IS ON-SITE TO OFFLOAD AND SET TANK
  3. EXCAVATION MUST BE READY FOR INSTALL
  4. MIN OVERHEAD CLEARANCE OF 18FT (5.5 METRES) IS REQUIRED
  5. ALL UNITS MUST BE HANDLED WITH PROPER LIFTING EQUIPMENT
  6. TANK DESIGNED FOR A MAXIMUM FILL COVER DEPTH OF 1000mm, NO MINIMUM FILL COVER DEPTH, AND 12 kPa VEHICLE LOADING
  7. SAFETY LIDS INSTALLED IN ALL OPENINGS AS PER CSA-B66-21



MANUFACTURED:  
OTTAWA, ON  
1-800-655-3430

CONCRETE: 40MPa / 5,800PSI  
AIR ENTRAINMENT: 5-8%  
MEETS CAN/CSA-B66  
REINFORCEMENT: MEETS G30.14-M1983

CSA APPROVED  
WEIGHT: 63,150lbs / 28,645kg (TOP)  
81,625lbs / 37,025kg (BOTTOM)  
"AGINP"

DRAWN BY:  
JAY PATEL

DATE:  
APRIL/2022

**68500 LITRES**

WORKING CAPACITY: 68,703L TO INVERT OF OUTLET  
TOTAL CAPACITY: 75,616L TO UNDERSIDE OF CHAMBER LID

**SEPTIC TANK**