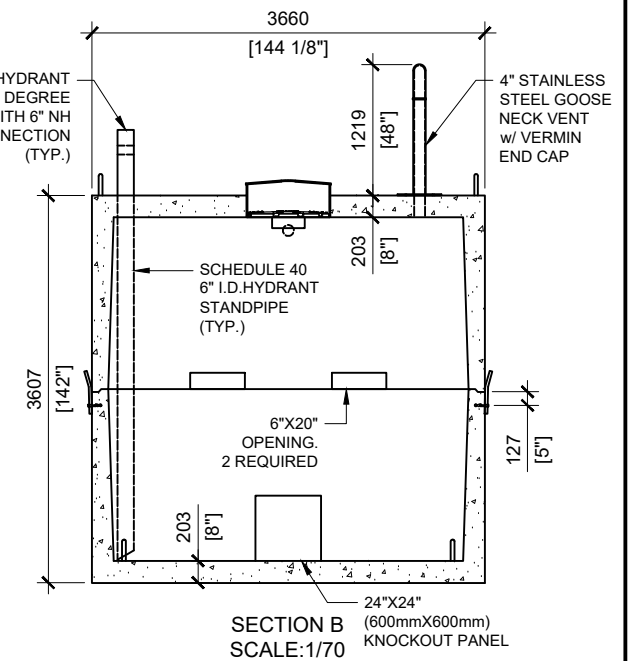
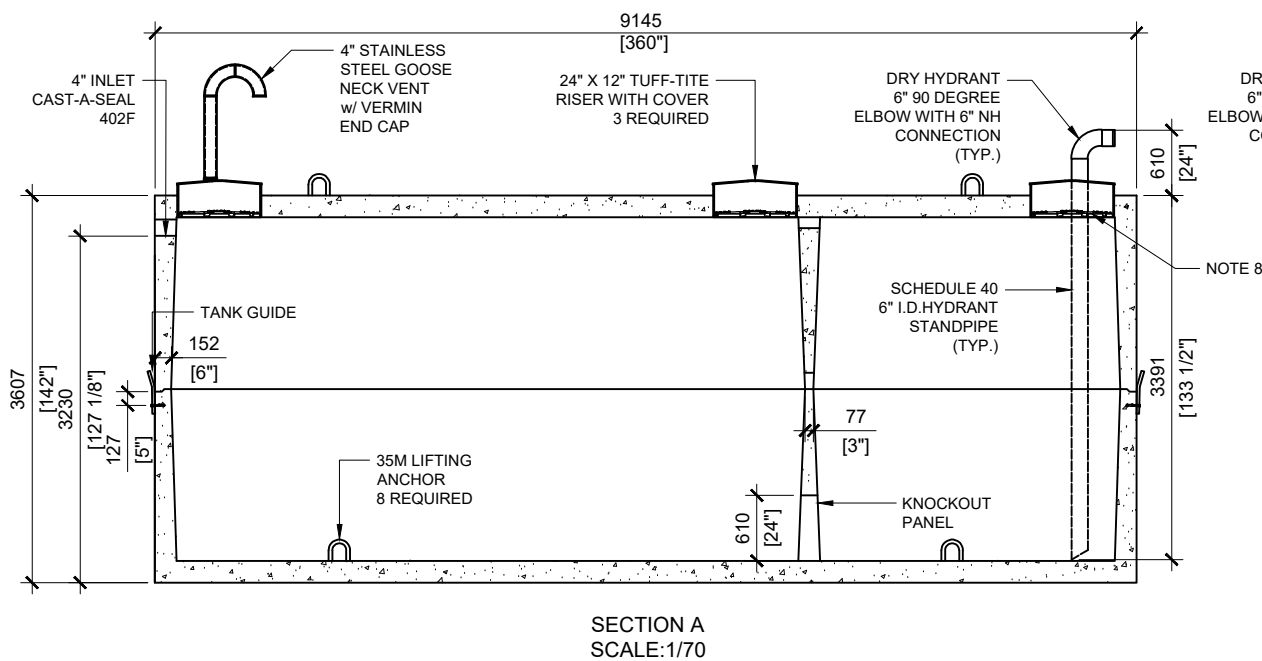


GENERAL NOTES:

1. UNITS ARE SEALED WITH BUTYL TAPE AT THE JOINTS
2. CONTRACTOR TO ENSURE CRANE IS ON-SITE TO OFFLOAD AND SET TANK
3. EXCAVATION MUST BE READY FOR INSTALL
4. MIN OVERHEAD CLEARANCE OF 18FT (5.5 METRES) IS REQUIRED
5. ALL UNITS MUST BE HANDLED WITH PROPER LIFTING EQUIPMENT
6. TANK DESIGNED FOR A MAXIMUM FILL COVER DEPTH OF 1000mm, MO MINIMUM FILL COVER DEPTH, AND 12 kPa VEHICLE LOADING.
7. SCHEDULE 80 FLANGE FOR DRY HYDRANT TO BE FITTED ON SITE
8. TUF-TITE SAFETY LID INSTALLED IN OPENING AS PER CSA-B66-21

* TANKS SUITABLE FOR TRAFFIC LOADING



SINGLE FIRE WATER TANK



MANUFACTURED:
OTTAWA, ON
1-800-655-3430

CONCRETE TYPE: SCC
CONCRETE: 45MPa at 28 days / 6,500PSI
AIR ENTRAINMENT: 5-8%
REINFORCEMENT: STEEL TO CSA CAN
A23.1 /A23.3 G30.18 Fy=400MPa

WEIGHT:
BOTTOM - 78,034lbs / 35,470kg
TOP - 77,753lbs / 35,342kg
CSA APPROVED
MEETS CAN/CSA-B66
"AGINP"

DRAWN BY:
JAY PATEL

DATE:
APRIL/2022

84000 LITRES

WORKING CAPACITY: 86752L TO INVERT OF INLET
TOTAL CAPACITY: 91606L TO UNDERSIDE OF CHAMBER LID