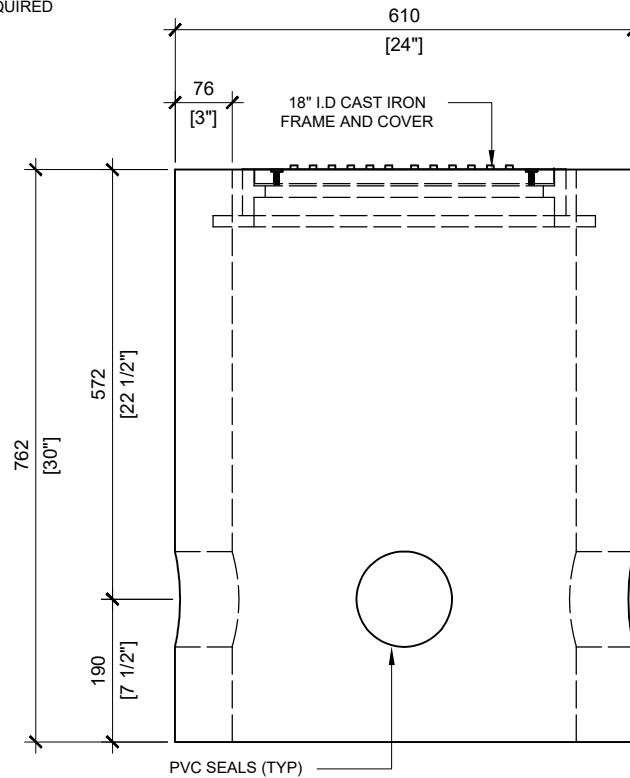
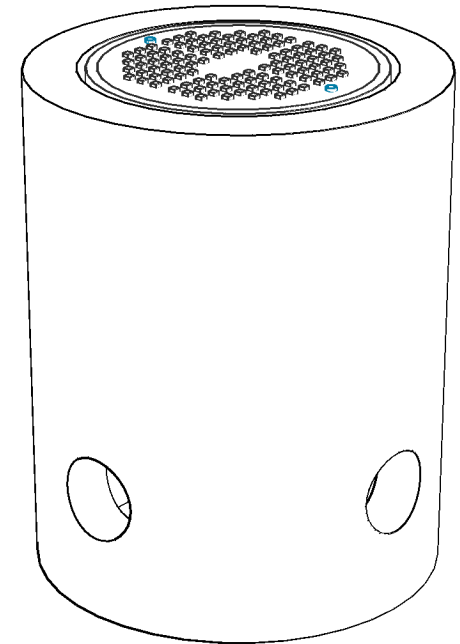


TOP VIEW
SCALE: 1/10

12mm DIA. 20mm
LONG SS HEX HEAD
BOLTS - 2
REQUIRED



FRONT VIEW
SCALE: 1/10



GENERAL NOTES:

1. CABLE ENTRY OPENINGS - 4- $\frac{3}{4}$ " PVC SEALS
2. DELIVERY IS MADE BY CRANE-EQUIPPED TRUCKS
3. EXCAVATION MUST BE READY, SAFE AND ACCESSIBLE FOR UNLOADING FROM THE REAR OF THE TRUCK.
4. MIN OVERHEAD CLEARANCE OF 18FT IS REQUIRED
5. ALL UNITS MUST BE HANDLED WITH PROPER LIFTING EQUIPMENT (I.E. SPREADER BAR)



MANUFACTURED:
LINDSAY, ON
1-800-655-3430

CONCRETE: 35MPa / 5,000PSI
AIR ENTRAINMENT: 6-8%
REINFORCEMENT : STEEL TO CSA CAN
A23.1 / A23.3. G30.18 Fy=400MPa

WEIGHT:
BCP2112.02 - 600lbs / 280kg

DRAWN BY:
PRASHAN

DATE:
JAN/2024

BCP2112.02

PRECAST CONCRETE ELECTRICAL HANDHOLE
MEETS OPSD 2112.020