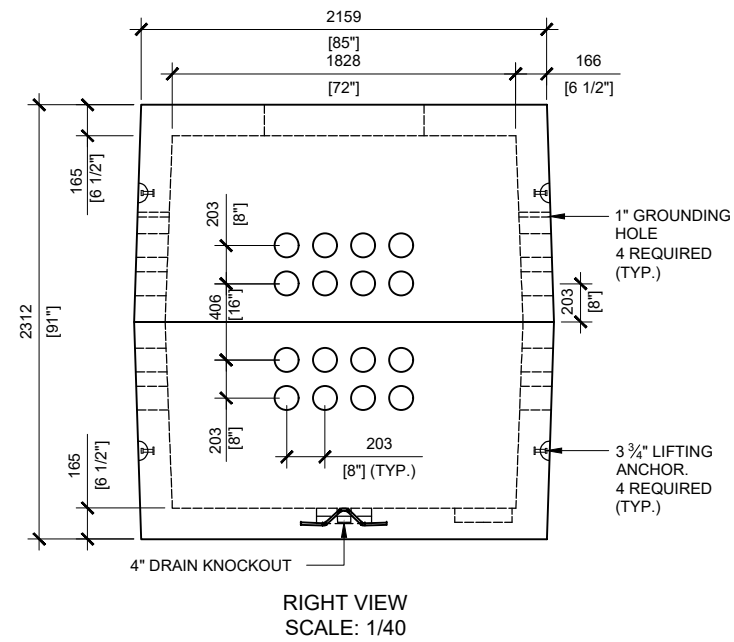
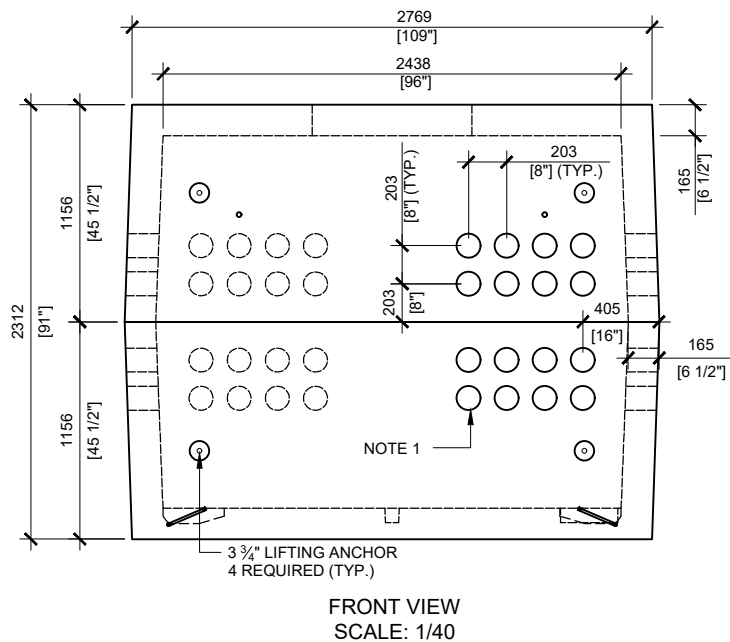


- GENERAL NOTES:**
1. CABLE ENTRY OPENINGS - 4-3/4" PVC SEALS
 2. DELIVERY IS MADE BY CRANE-EQUIPPED TRUCKS
 3. EXCAVATION MUST BE READY, SAFE AND ACCESSIBLE FOR UNLOADING FROM THE REAR OF THE TRUCK.
 4. MIN OVERHEAD CLEARANCE OF 18FT (5.5 METRES) IS REQUIRED
 5. ALL UNITS MUST BE HANDLED WITH PROPER LIFTING EQUIPMENT (I.E. SPREADER BAR)
 6. MAXIMUM BURIAL DEPTH 40"
- * TYPICAL USE WOULD REQUIRE JW500 CAST IRON FRAME AND COVER



MANUFACTURED:
BROOKLIN, ON
1-800-655-3430

CONCRETE: 35MPa / 5,000PSI
AIR ENTRAINMENT: 5-8%
REINFORCEMENT: STEEL TO CSA
CAN A23.1 / A23.3. G30.18 Fy=400MPa

WEIGHT:
BCP104H20 -25,100lbs / 11,400kg

DRAWN BY:
N.CHAN

DATE:
JUL/2020

BCP104H20

PRECAST CONCRETE UTILITY MANHOLE
DESIGNED TO CL-625-ONT TRUCK LIVE LOADING AS PER CSA S6-14