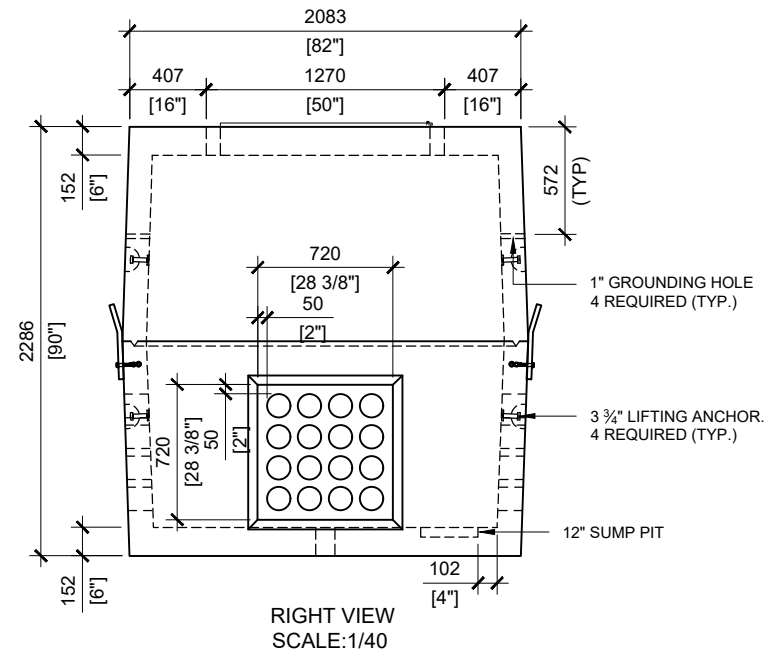
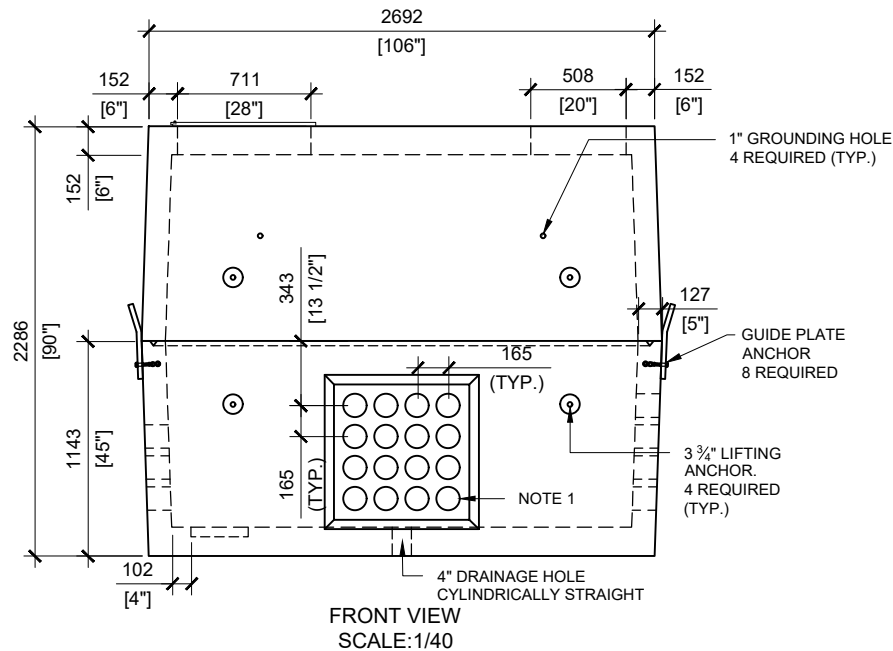


GENERAL NOTES:

1. CABLE ENTRY OPENINGS - 4 3/4" PVC SEALS
2. DELIVERY IS MADE BY CRANE-EQUIPPED TRUCKS, EXCAVATION MUST BE READY, SAFE AND ACCESSIBLE FOR UNLOADING FROM THE REAR OF THE TRUCK.
3. MIN OVERHEAD CLEARANCE OF 18FT (5.5 METRES) IS REQUIRED.
4. ALL UNITS MUST BE HANDLED WITH PROPER LIFTING EQUIPMENT (I.E. SPREADER BAR).
5. UNITS MUST BE SEALED WITH BUTYL TAPE AT THE JOINTS.
6. WATER PRESSURE WAS NOT CONSIDERED IN THE STRUCTURAL DESIGN. REPORT WATER TABLE DURING CONSTRUCTION.
7. PLACE BACKFILL SIMULTANEOUSLY AROUND THE VAULT TO AVOID UNBALANCE LATERAL EARTH PRESSURES.
8. BACKFILL SHOULD BE UNIFORMLY COMPACTED TO A MINIMUM OF 98% MATERIALS SPMD.
9. SOIL BEARING CAPACITY 75 kPa (SLS).



MANUFACTURED:
LINDSAY, ON
1-800-655-3430

CONCRETE: 35MPa / 5,000PSI
AIR ENTRAINMENT: 5-8%
REINFORCEMENT : STEEL TO CSA CAN
A23.1 / A23.3. G30.18 Fy=400MPa

WEIGHT:
BCP104SK -20,485LBS / 9,290kg

DRAWN BY:
PRASHAN

DATE:
AUG/2023

BCP104SK

FOUNDATION FOR PADMOUNT TRANSFORMER