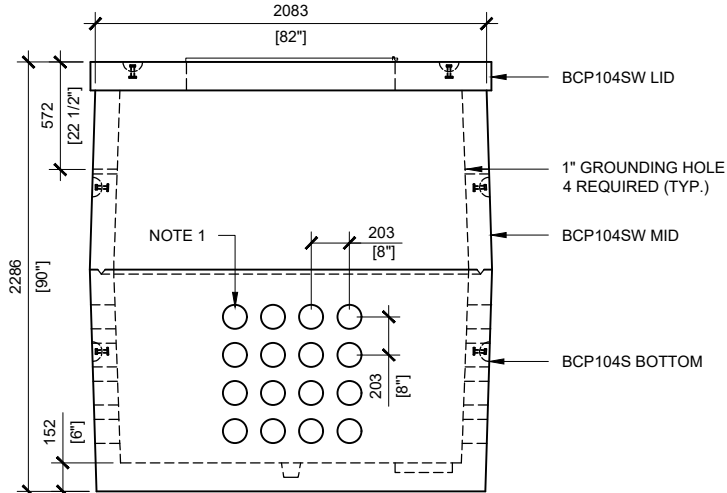


TOP VIEW
SCALE:1/40

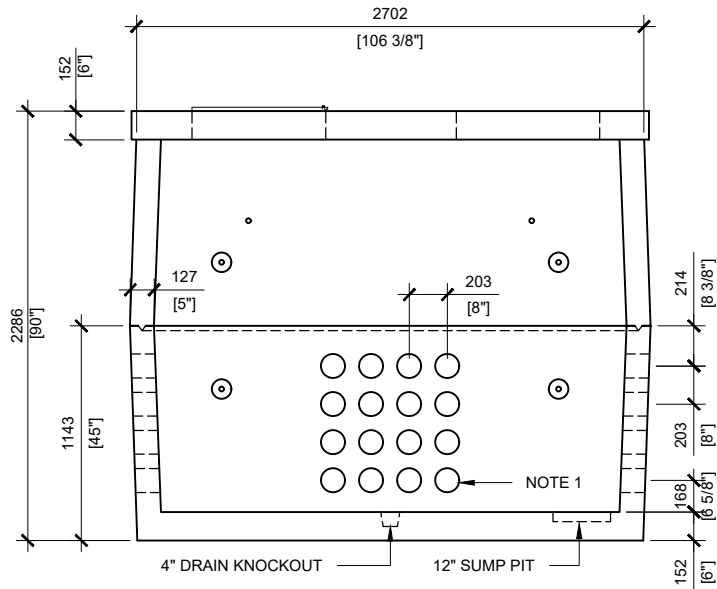
3- 3/4" SWIFT LIFT.
12 REQUIRED (TYP.)



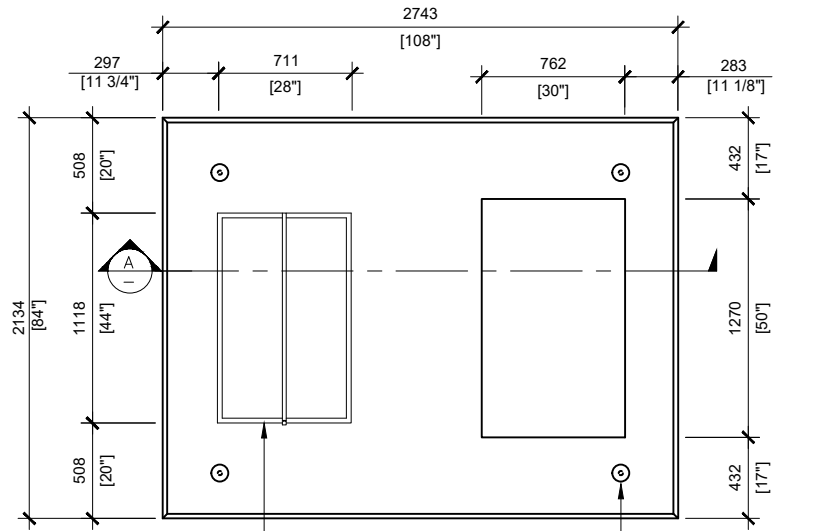
RIGHT VIEW
SCALE:1/40

GENERAL NOTES:

1. CABLE ENTRY OPENINGS- 4 3/4"-PVC SEALS
2. REINFORCEMENT STEEL TO CSA CAN A23 SERIES
3. WALL REINFORCING CENTER OF CONCRETE SECTION
4. DELIVERY IS MADE BY CRANE-EQUIPPED TRUCKS, EXCAVATION MUST BE READY, SAFE AND ACCESSIBLE FOR UNLOADING FROM THE REAR OF THE TRUCK.
5. MIN OVERHEAD CLEARANCE OF 18FT IS REQUIRED.
6. ALL UNITS MUST BE HANDLED WITH PROPER LIFTING EQUIPMENT. (I.E. SPREADER BAR).
7. UNITS WILL BE SEALED WITH BUTYL TAPE AT THE JOINTS
8. WATER PRESSURE WAS NOT CONSIDERED IN THE STRUCTURAL DESIGN. REPORT WATER TABLE DURING CONSTRUCTION
9. PLACE BACKFILL SIMULTANEOUSLY AROUND THE VAULT TO AVOID UNBALANCE LATERAL EARTH PRESSURES
10. BACKFILL SHOULD BE UNIFORMLY COMPACTED TO A MINIMUM OF 98% MATERIALS SPMD.



SECTION A
SCALE:1/50



28"x44"
GALVANIZED DOOR W/ LOCK BAR
BCP104SW LID TOP VIEW
SCALE:1/40

3- 3/4" SWIFT LIFT.
12 REQUIRED (TYP.)



MANUFACTURED:
BROOKLIN, ON
1-800-655-3430

CONCRETE: 35MPa / 5000PSI
AIR ENTRAINMENT : 6-8%
REINFORCEMENT : STEEL TO CSA
CAN A23.1 / A23.3. G30.18 Fy=400MPa

WEIGHT:
BCP104SW -20,485LBS / 9,290kg

DRAWN BY:
S.RIMLAND

DATE:
SEPT/2018

BCP104SW

FOUNDATION FOR PADMOUNT TRANSFORMER