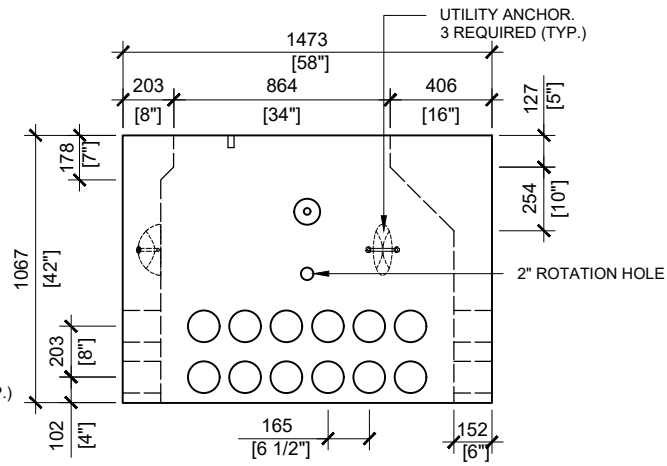
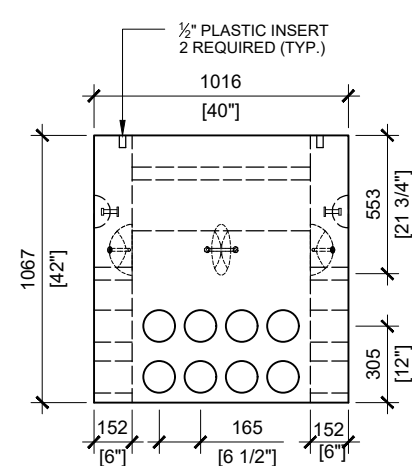


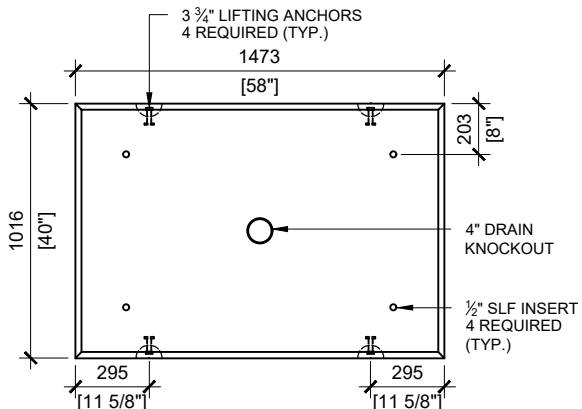
BCP110PC TOP VIEW
SCALE: 1/30



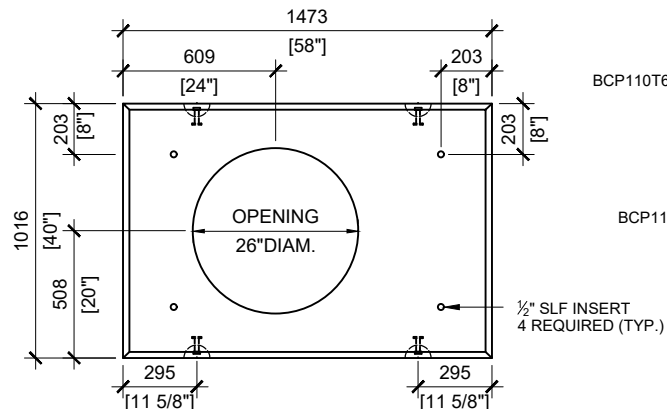
BCP110PC FRONT VIEW
SCALE: 1/30



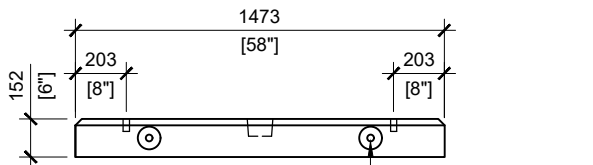
BCP110PC RIGHT VIEW
SCALE: 1/30



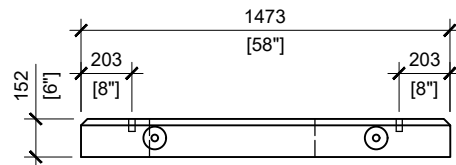
BCP110B TOP VIEW
SCALE: 1/30



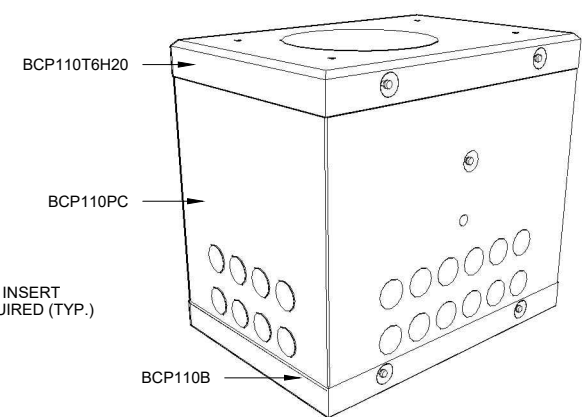
BCP110T6H20 TOP VIEW
SCALE: 1/30



BCP110B FRONT VIEW
SCALE: 1/30



BCP110T6H20 FRONT VIEW
SCALE: 1/30



GENERAL NOTES:

1. CABLE ENTRY OPENINGS - 4-3/4" PVC SEALS
2. DELIVERY IS MADE BY CRANE-EQUIPPED TRUCKS
3. EXCAVATION MUST BE READY, SAFE AND ACCESSIBLE FOR UNLOADING FROM THE REAR OF THE TRUCK.
4. MIN OVERHEAD CLEARANCE OF 18FT (5.5 METRES) IS REQUIRED
5. ALL UNITS MUST BE HANDLED WITH PROPER LIFTING EQUIPMENT (I.E. SPREADER BAR)

* TYPICAL USE WOULD REQUIRE JW150 CAST IRON FRAME AND COVER (OPSD 401.01)



MANUFACTURED BY:
BROOKLIN, ON
1-800-655-3430

CONCRETE: 35MPa / 5,000PSI
 AIR ENTRAINMENT: 5-8%
 REINFORCEMENT : STEEL TO CSA CAN
 A23.1 / A23.3. G30.18 Fy=400MPa

WEIGHT:
 BCP110T6H20 - 1,000lbs / 455kg
 BCP110PC - 3,650lbs / 1,640kg
 BCP110B - 1,220lbs / 554kg

DRAWN BY:
N.CHAN

DATE:
JUL/2020

BCP110H20

PRECAST CONCRETE UTILITY MANHOLE
 DESIGNED TO CL-625-ONT TRUCK LIVE LOADING AS PER CSA S6-14