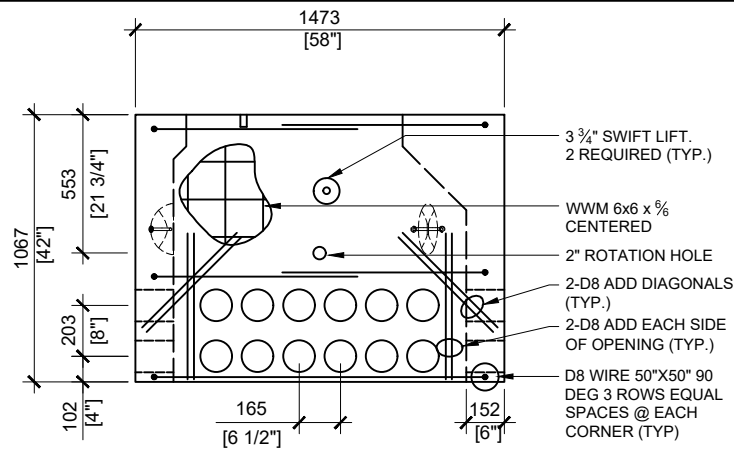
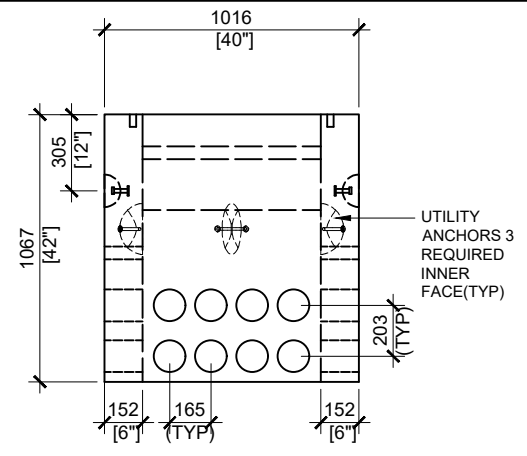


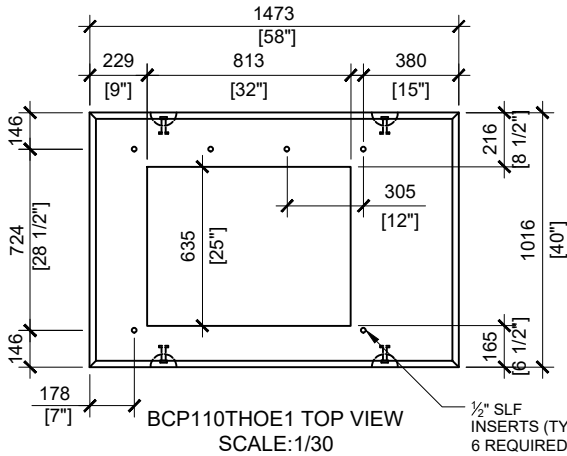
BCP110PC TOP VIEW  
SCALE:1/30



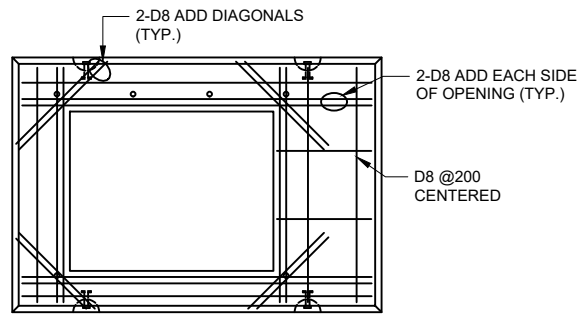
BCP110PC FRONT ELEVATION  
SCALE:1/30



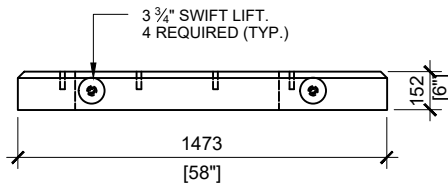
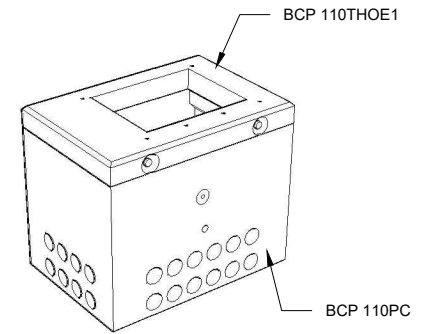
BCP110PC RIGHT ELEVATION  
SCALE:1/30



BCP110THOE1 TOP VIEW  
SCALE:1/30



BCP110THOE1 REINFORCING  
SCALE:1/30



BCP110THOE1 FRONT VIEW  
SCALE:1/30

**GENERAL NOTES:**

- CABLE ENTRY OPENINGS - 4 3/4" PVC SEALS
- DELIVERY IS MADE BY CRANE-EQUIPPED TRUCKS
- EXCAVATION MUST BE READY, SAFE AND ACCESSIBLE FOR UNLOADING FROM THE REAR OF THE TRUCK.
- MIN OVERHEAD CLEARANCE OF 18FT IS REQUIRED
- ALL UNITS MUST BE HANDLED WITH PROPER LIFTING EQUIPMENT (I.E. SPREADER BAR)
- FOR INSTALLATIONS ON BEDDING, THE ALLOWABLE BEARING PRESSURE AT THE UNDERSIDE OF THE VAULT BOX SECTION SHALL BE A MINIMUM OF 150kPa ( S.L.S.)
- THIS BEARING PRESSURE IS ASSUMED AND SHALL BE CONFIRMED BY A QUALIFIED GEOTECHNICAL ENGINEER PRIOR TO INSTALLATION OF THE VAULT
- THE TRANSFORMER SHOULD BE UNIFORMLY DISTRIBUTED AND THE EDGE OF THE TRANSFORMER BASE SHALL BE SET WITHIN 150MM OF THE INTERIOR DIMENSIONS FOR THE BASE
- TOP EDGES TO HAVE CHAMFER

**MAXIMUM LOAD CAPACITY:**

- MAX. EQUIPMENT WEIGHT: 75kN (16,860lbs)



MANUFACTURED:  
BROOKLIN, ON  
1-800-655-3430

CONCRETE: 35MPa / 5,000PSI  
AIR ENTRAINMENT: 6-8%  
REINFORCEMENT : STEEL TO CSA CAN  
A23.1 / A23.3. G30.18 Fy=400MPa

WEIGHT:  
BCP110PC -3,650lbs / 1,640kg  
BCP110THOE1 -820lbs / 375kg

DRAWN BY:  
S.RIMLAND

DATE:  
AUG/2017

**BCP110HOE1P**

INCLUDES: BCP110C/ BCP110THOE1