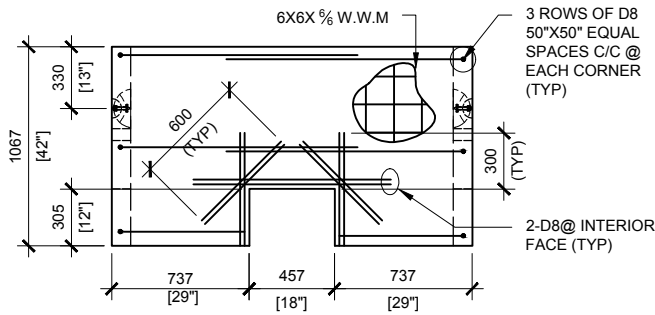
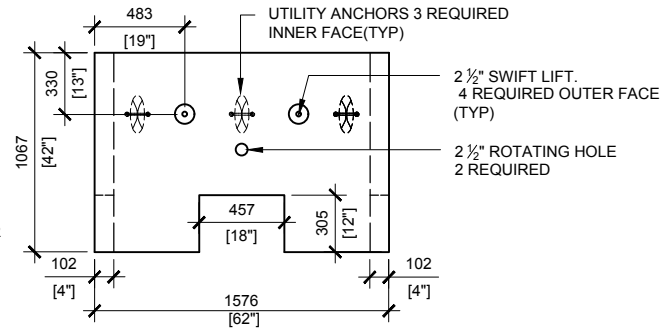


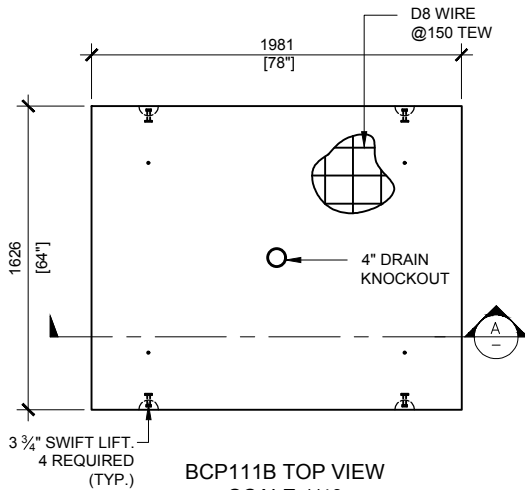
BCP111C TOP VIEW
SCALE:1/40



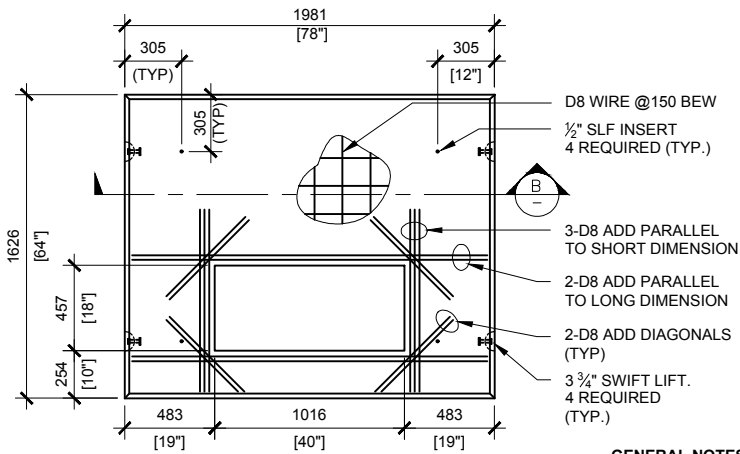
BCP111C FRONT VIEW
SCALE:1/40



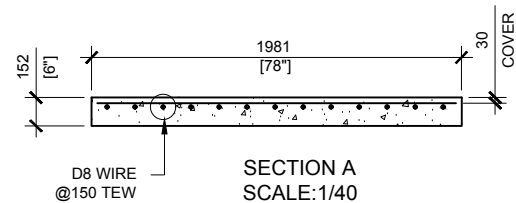
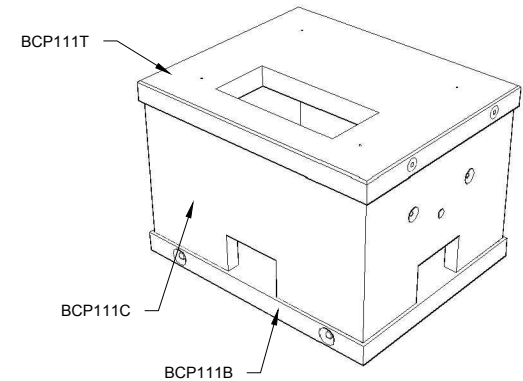
BCP111C RIGHT VIEW
SCALE:1/40



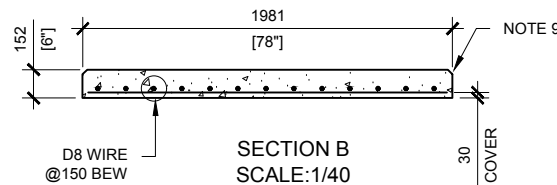
BCP111B TOP VIEW
SCALE:1/40



BCP111T TOP VIEW
SCALE:1/40



SECTION A
SCALE:1/40



SECTION B
SCALE:1/40

GENERAL NOTES:

- CABLE ENTRY OPENINGS - 4 3/4" PVC SEALS
 - DELIVERY IS MADE BY CRANE-EQUIPPED TRUCKS
 - EXCAVATION MUST BE READY, SAFE AND ACCESSIBLE FOR UNLOADING FROM THE REAR OF THE TRUCK.
 - MIN OVERHEAD CLEARANCE OF 18FT IS REQUIRED
 - ALL UNITS MUST BE HANDLED WITH PROPER LIFTING EQUIPMENT (I.E. SPREADER BAR)
 - FOR INSTALLATIONS ON STONE BEDDING, THE ALLOWABLE BEARING PRESSURE AT THE UNDERSIDE OF THE VAULT BOX SECTION SHALL BE A MINIMUM OF 75KPA (S.L.S.)
 - THIS BEARING PRESSURE IS ASSUMED AND SHALL BE CONFIRMED BY A QUALIFIED GEOTECHNICAL ENGINEER PRIOR TO INSTALLATION OF THE VAULT
 - THE TRANSFORMER SHOULD BE UNIFORMLY DISTRIBUTED AND THE EDGE OF THE TRANSFORMER BASE SHALL BE SET WITHIN 150MM OF THE INTERIOR DIMENSIONS FOR THE BASE
 - TOP EDGES TO HAVE CHAMFER.
- MAXIMUM LOAD CAPACITY:**
- MAX. LINEAL LOAD ON TOP SLAB: 15kN/m (UNFACTORED)
 - MAX. EQUIPMENT WEIGHT: 50kN (11,240LBS)



MANUFACTURED BY:
BROOKLIN, ON
1-800-655-3430

CONCRETE: 35MPa / 5,000PSI
AIR ENTRAINMENT: 6-8%
REINFORCEMENT : STEEL TO CSA CAN
A23.1 / A23.3. G30.18 Fy=400MPa

WEIGHT:
BCP111T -2,200lbs / 1,000kg
BCP111C -3,500lbs / 1,590kg
BCP111B -2,600lbs / 1,120kg

DRAWN BY:
S.RIMLAND
DATE:
AUG/2017

BCP111HO-01

INCLUDES: BCP111T/BCP111C / BCP111B