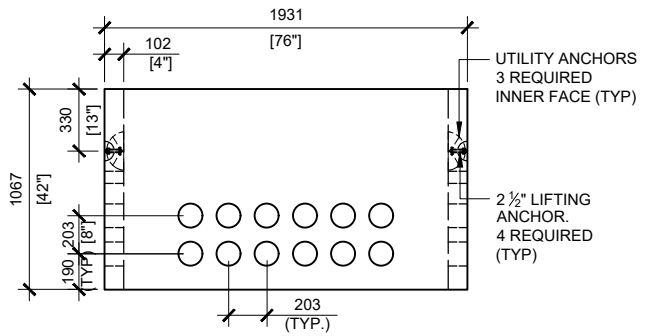
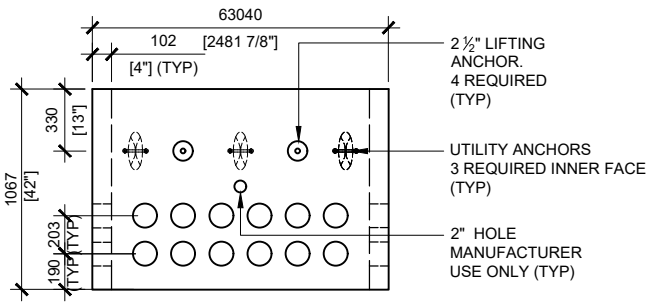


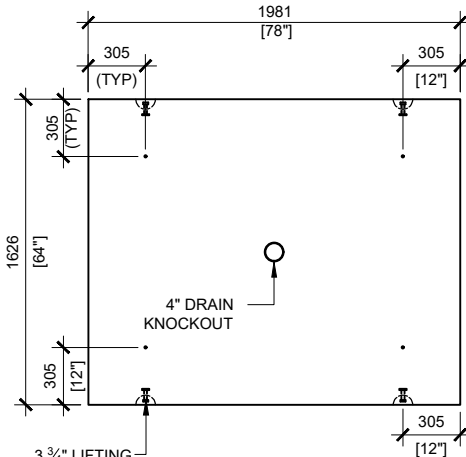
BCP111P TOP VIEW  
SCALE:1/40



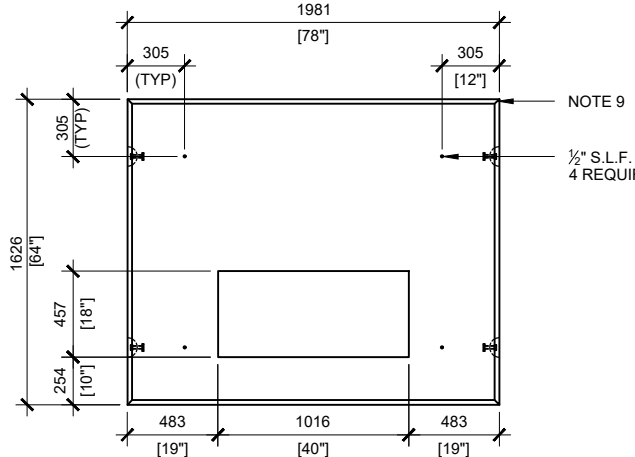
BCP111P FRONT VIEW  
SCALE:1/40



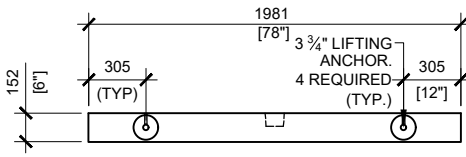
BCP111P RIGHT VIEW  
SCALE:1/40



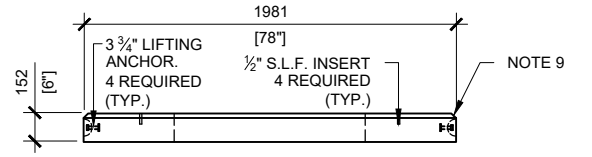
BCP111B TOP VIEW  
SCALE:1/40



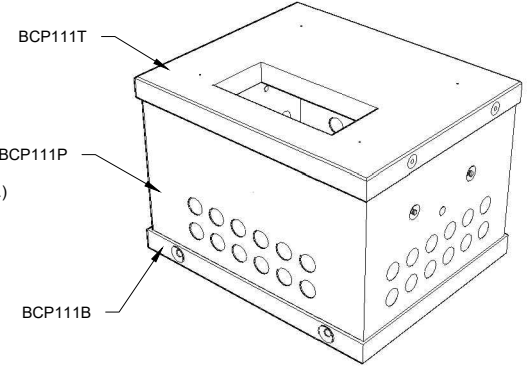
BCP111T TOP VIEW  
SCALE:1/40



FRONT VIEW  
SCALE:1/40



FRONT VIEW  
SCALE:1/40



**GENERAL NOTES:**

- CABLE ENTRY OPENINGS - 4 3/4" PVC SEALS
- DELIVERY IS MADE BY CRANE-EQUIPPED TRUCKS
- EXCAVATION MUST BE READY, SAFE AND ACCESSIBLE FOR UNLOADING FROM THE REAR OF THE TRUCK.
- MIN OVERHEAD CLEARANCE OF 18FT (5.5 METRES) IS REQUIRED
- ALL UNITS MUST BE HANDLED WITH PROPER LIFTING EQUIPMENT (I.E. SPREADER BAR)
- FOR INSTALLATIONS ON STONE BEDDING, THE ALLOWABLE BEARING PRESSURE AT THE UNDERSIDE OF THE VAULT BOX SECTION SHALL BE A MINIMUM OF 75kPa ( S.L.S.)
- THIS BEARING PRESSURE IS ASSUMED AND SHALL BE CONFIRMED BY A QUALIFIED GEOTECHNICAL ENGINEER PRIOR TO INSTALLATION OF THE VAULT
- THE TRANSFORMER SHOULD BE UNIFORMLY DISTRIBUTED AND THE EDGE OF THE TRANSFORMER BASE SHALL BE SET WITHIN 150MM OF THE INTERIOR DIMENSIONS FOR THE BASE
- TOP EDGES TO HAVE CHAMFER



MANUFACTURED:  
BROOKLIN, ON  
1-800-655-3430

CONCRETE: 35MPa / 5,000PSI  
AIR ENTRAINMENT: 5-8%  
REINFORCEMENT : STEEL TO CSA CAN  
A23.1 / A23.3. G30.18 Fy=400MPa

WEIGHT:  
BCP111T -2,200lbs / 1,000kg  
BCP111P -3,645lbs / 1,650kg  
BCP111B -2,600lbs / 1,120kg

DRAWN BY:  
N.CHAN  
DATE:  
JUN/2020

**BCP111HO-02**

INCLUDES: BCP111T/ BCP111P / BCP111B