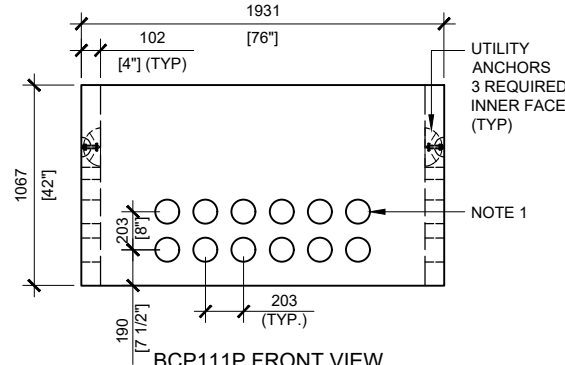
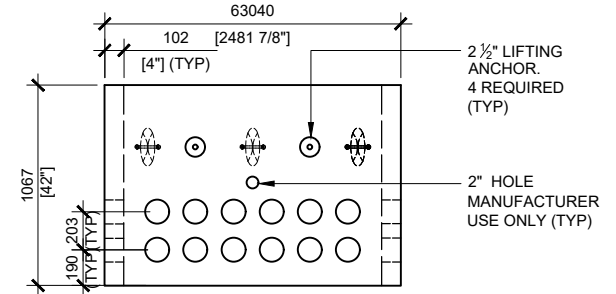


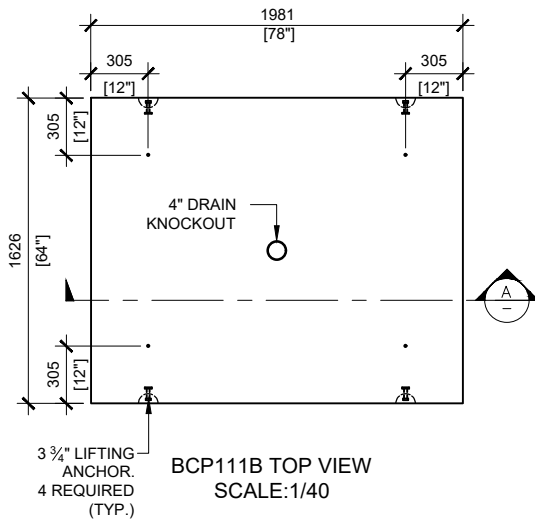
BCP111P TOP VIEW
SCALE:1/40



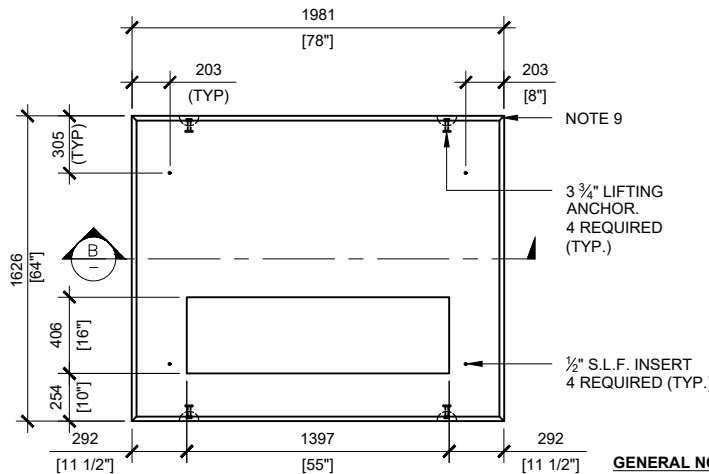
BCP111P FRONT VIEW
SCALE:1/40



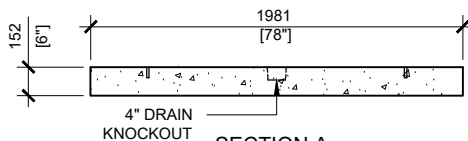
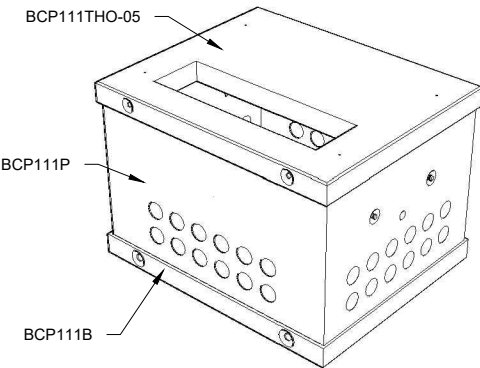
BCP111P RIGHT VIEW
SCALE:1/40



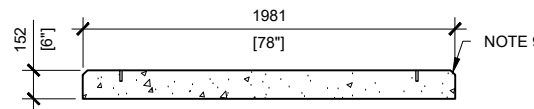
BCP111B TOP VIEW
SCALE:1/40



BCP111TH0-05 TOP VIEW
SCALE:1/40



SECTION A
SCALE:1/40



SECTION B
SCALE:1/40

GENERAL NOTES:

1. CABLE ENTRY OPENINGS - 4 3/4" PVC SEALS
2. DELIVERY IS MADE BY CRANE-EQUIPPED TRUCKS
3. EXCAVATION MUST BE READY, SAFE AND ACCESSIBLE FOR UNLOADING FROM THE REAR OF THE TRUCK.
4. MIN OVERHEAD CLEARANCE OF 18FT (5.5 METRES) IS REQUIRED
5. ALL UNITS MUST BE HANDLED WITH PROPER LIFTING EQUIPMENT (I.E. SPREADER BAR)
6. FOR INSTALLATIONS ON STONE BEDDING, THE ALLOWABLE BEARING PRESSURE AT THE UNDERSIDE OF THE VAULT BOX SECTION SHALL BE A
7. THIS BEARING PRESSURE IS ASSUMED AND SHALL BE CONFIRMED BY A QUALIFIED GEOTECHNICAL ENGINEER PRIOR TO INSTALLATION OF THE VAULT
8. THE TRANSFORMER SHOULD BE UNIFORMLY DISTRIBUTED AND THE EDGE OF THE TRANSFORMER BASE SHALL BE SET WITHIN 150MM OF THE INTERIOR DIMENSIONS FOR THE BASE
9. TOP EDGES TO HAVE CHAMFER

MINIMUM OF 75kPa (S.L.S.)



MANUFACTURED:
BROOKLIN, ON
1-800-655-3430

CONCRETE: 35MPa / 5,000PSI
AIR ENTRAINMENT: 6-8%
REINFORCEMENT : STEEL TO CSA CAN
A23.1 / A23.3. G30.18 Fy=400MPa

WEIGHT:
BCP111TH0-05 -2,200lbs / 1,000kg
BCP111P -3,645lbs / 1,650kg
BCP111B -2,600lbs / 1,120kg

DRAWN BY:
S.RIMLAND

DATE:
JUN/2020

BCP111HO-05

INCLUDES: BCP111TH0-05/ BCP111P / BCP111B