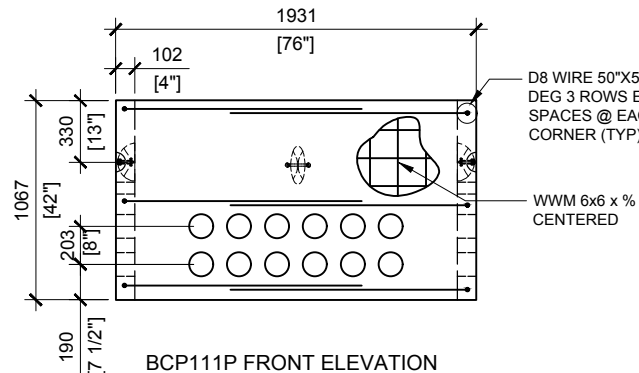
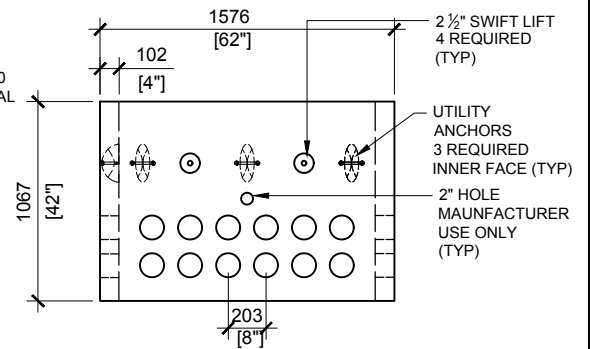


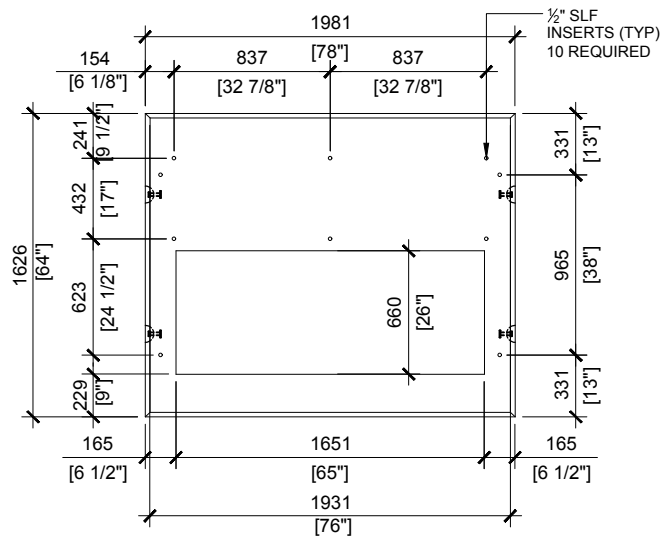
BCP111P TOP VIEW
SCALE: 1/40



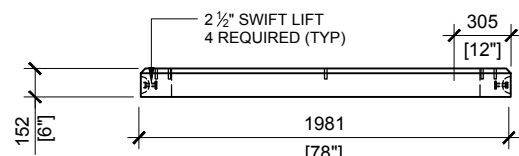
BCP111P FRONT ELEVATION
SCALE: 1/40



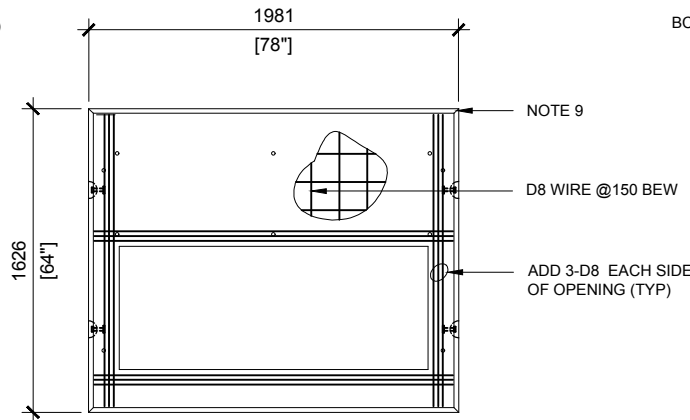
BCP111P RIGHT ELEVATION
SCALE: 1/40



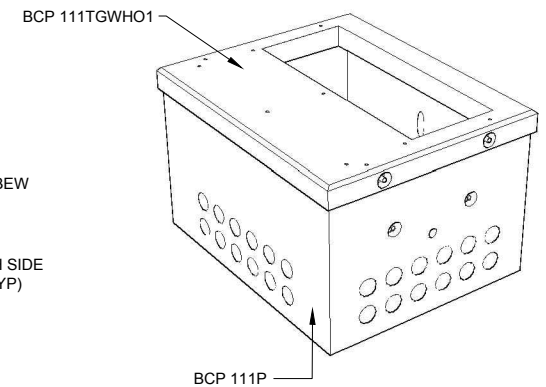
BCP111TGWHO1 TOP VIEW
SCALE: 1/40



BCP111TGWHO1 FRONT VIEW
SCALE: 1/40



BCP111TGWHO1
REINFORCING



GENERAL NOTES:

- CABLE ENTRY OPENINGS - 4 3/4" PVC SEALS
- DELIVERY IS MADE BY CRANE-EQUIPPED TRUCKS
- EXCAVATION MUST BE READY, SAFE AND ACCESSIBLE FOR UNLOADING FROM THE REAR OF THE TRUCK.
- MIN OVERHEAD CLEARANCE OF 18FT IS REQUIRED
- ALL UNITS MUST BE HANDLED WITH PROPER LIFTING EQUIPMENT (I.E. SPREADER BAR)
- FOR INSTALLATIONS ON STONE
- THIS BEARING PRESSURE IS ASSUMED AND SHALL BE CONFIRMED BY A QUALIFIED GEOTECHNICAL ENGINEER PRIOR TO INSTALLATION OF THE VAULT
- THE TRANSFORMER SHOULD BE UNIFORMLY DISTRIBUTED AND THE EDGE OF THE TRANSFORMER BASE SHALL BE SET WITHIN 150MM OF THE INTERIOR DIMENSIONS FOR THE BASE
- TOP EDGES TO HAVE 25MM CHAMFER

MAXIMUM LOAD CAPACITY:

- MAX. LINEAL LOAD ON TOP SLAB: 15kN/m (UNFACTORED)
- MAX. EQUIPMENT WEIGHT: 50kN (11,240LBS)



MANUFACTURED:
BROOKLIN, ON
1-800-655-3430

CONCRETE: 35MPa / 5,000PSI
AIR ENTRAINMENT: 6-8%
REINFORCEMENT : STEEL TO CSA CAN
A23.1 / A23.3. G30.18 Fy=400MPa

WEIGHT:
BCP111TGWHO1 -1,780lbs / 810kg
BCP111P -3,635lbs / 1,650kg

DRAWN BY:
S.RIMLAND

DATE:
AUG/2017

BCP111HO3P4W

INCLUDES: BCP111TGWHO1/ BCP111P