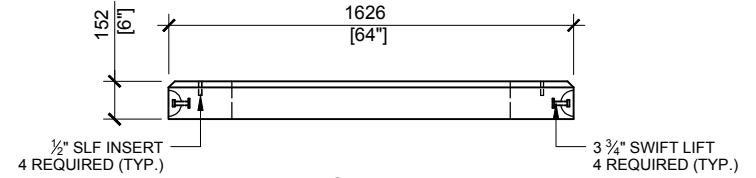
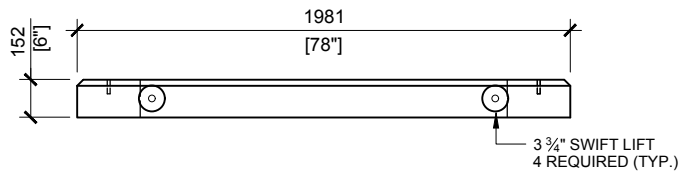
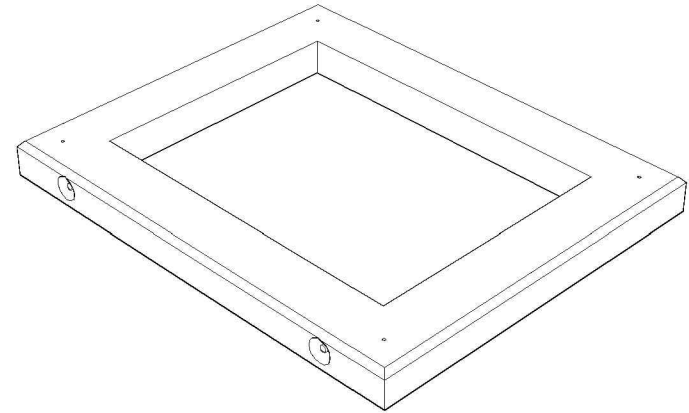


TOP VIEW
 SCALE:1/30



RIGHT VIEW
 SCALE:1/30



FRONT VIEW
 SCALE:1/30

GENERAL NOTES:

1. DELIVERY IS MADE BY CRANE-EQUIPPED TRUCKS
2. EXCAVATION MUST BE READY, SAFE AND ACCESSIBLE FOR UNLOADING FROM THE REAR OF THE TRUCK.
3. MIN OVERHEAD CLEARANCE OF 18FT IS REQUIRED
4. ALL UNITS MUST BE HANDLED WITH PROPER LIFTING EQUIPMENT (I.E. SPREADER BAR)
5. TOP EDGES TO HAVE CHAMFER



MANUFACTURED:
 BROOKLIN, ON
 1-800-655-3430

CONCRETE: 35MPa / 5,000PSI
 AIR ENTRAINMENT: 6-8%
 REINFORCEMENT : STEEL TO CSA
 CAN A23.1 / A23.3. G30.18 Fy=400MPa

WEIGHT:
 BCP111TK (KABAR) -1,260Lbs / 572kg

DRAWN BY:
 S.RIMLAND

DATE:
 AUG/2017

BCP111TK

TOP COLLAR FOR PRECAST FOUNDATION