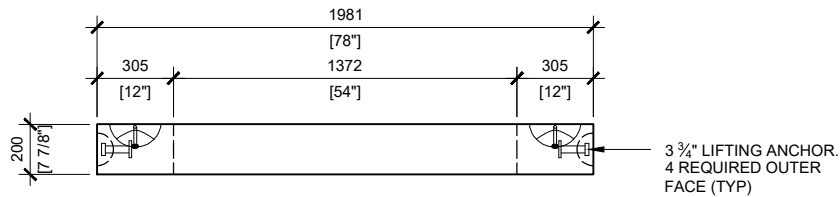
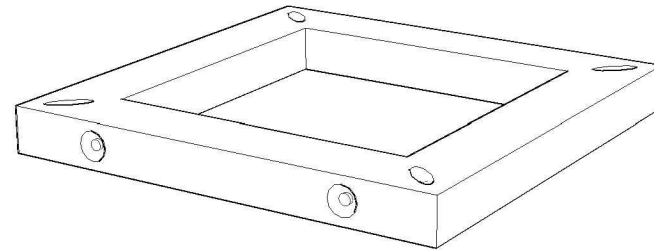


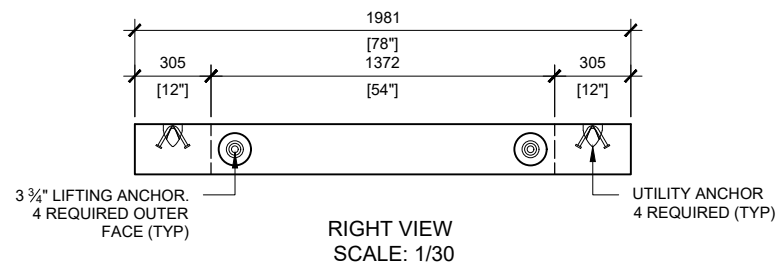
TOP VIEW  
SCALE: 1/30

**GENERAL NOTES:**

1. STAMP DATE AT LEFT UPPER CORNER OF EVERY PIECE
2. DELIVERY IS MADE BY CRANE-EQUIPPED TRUCKS
3. EXCAVATION MUST BE READY, SAFE AND ACCESSIBLE FOR UNLOADING FROM THE REAR OF THE TRUCK.
4. MIN OVERHEAD CLEARANCE OF 18FT (5.5 METRES) IS REQUIRED
5. ALL UNITS MUST BE HANDLED WITH PROPER LIFTING EQUIPMENT (I.E. SPREADER BAR)
6. FOR INSTALLATIONS ON STONE BEDDING, THE ALLOWABLE BEARING PRESSURE AT THE UNDERSIDE OF THE VAULT BOX SECTION SHALL BE A MINIMUM OF 150KPA (3000PSF S.L.S.)
7. THIS BEARING PRESSURE IS ASSUMED AND SHALL BE CONFIRMED BY A QUALIFIED GEOTECHNICAL ENGINEER PRIOR TO INSTALLATION OF THE VAULT
8. THE TRANSFORMER SHOULD BE UNIFORMLY DISTRIBUTED AND THE EDGE OF THE TRANSFORMER BASE SHALL BE SET WITHIN 150MM OF THE INTERIOR DIMENSIONS FOR THE BASE
9. EXPOSURE CLASSIFICATION TO FREEZING & THAWING IN A SATURATED CONDITION BUT WITH NO CHLORIDES TO BE F1
10. CONCRETE COVER ON PRECAST STRIP FOOTING TO BE 50MM, ALL OTHERS TO BE 30MM



FRONT VIEW  
SCALE: 1/30



RIGHT VIEW  
SCALE: 1/30



MANUFACTURED:  
BROOKLIN, ON  
1-800-655-3430

CONCRETE: 35MPa / 5,000PSI  
 AIR ENTRAINMENT: 5-8%  
 REINFORCEMENT : STEEL TO CSA  
 CAN A23.1 / A23.3. G30.18  
 Fy=400MPa

WEIGHT:  
BCP114BC9THS - 2,220lbs / 1,009kg

DRAWN BY:  
N.CHAN

DATE:  
JUL/2020

**BCP114BC9THS**

BASE COLLAR FOR PRECAST FOUNDATION