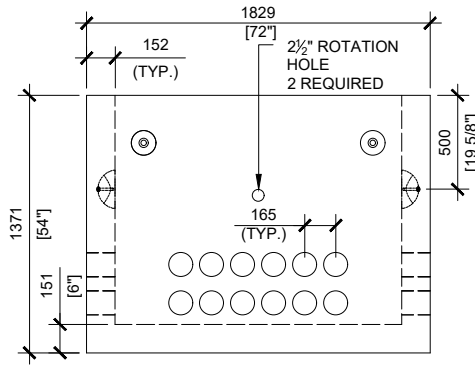
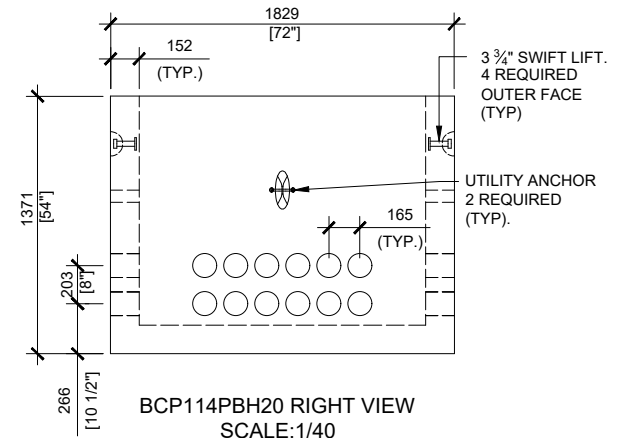


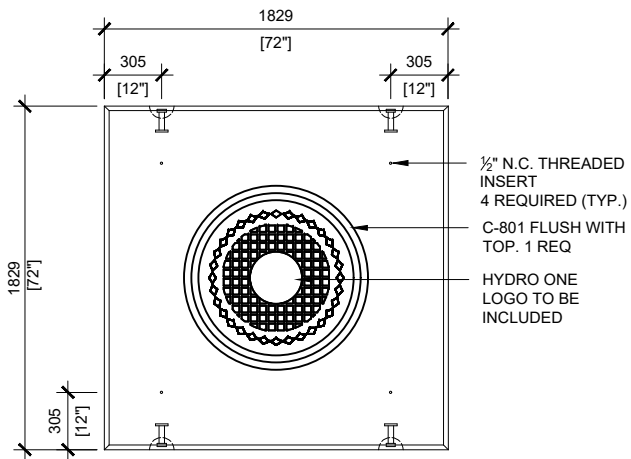
BCP114PBH20 TOP VIEW
SCALE:1/40



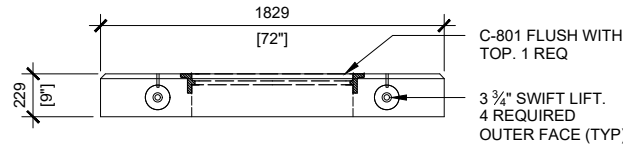
BCP114PBH20 FRONT VIEW
SCALE:1/40



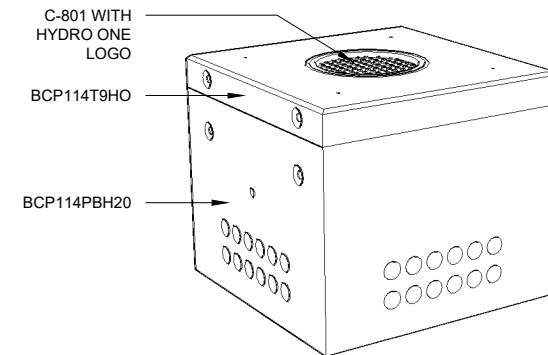
BCP114PBH20 RIGHT VIEW
SCALE:1/40



BCP114T9HO TOP VIEW
SCALE:1/40



BCP114T9HO FRONT VIEW
SCALE:1/40



GENERAL NOTES:

1. CABLE ENTRY OPENINGS - 4-3/4" PVC SEALS
2. DELIVERY IS MADE BY CRANE-EQUIPPED TRUCKS
3. EXCAVATION MUST BE READY, SAFE AND ACCESSIBLE FOR UNLOADING FROM THE REAR OF THE TRUCK.
4. MIN OVERHEAD CLEARANCE OF 18FT (5.5 METRES) IS REQUIRED
5. ALL UNITS MUST BE HANDLED WITH PROPER LIFTING EQUIPMENT (I.E. SPREADER BAR)



MANUFACTURED:
LINDSAY, ON
1-800-655-3430

CONCRETE: 35MPa / 5,000PSI
AIR ENTRAINMENT: 5-8%
REINFORCEMENT : STEEL TO CSA CAN
A23.1 / A23.3. G30.18 Fy=400MPa

WEIGHT:
BCP114T9HO -3,560lbs / 1,615kg
BCP114PBH20 -8,700lbs / 3,945kg

DRAWN BY:
PRASHAN

DATE:
AUG/2023

BCP114H20HO

PRECAST CONCRETE UTILITY MANHOLE
DESIGNED TO CL-625-ONT TRUCK LIVE LOADING AS PER CSA S6-14