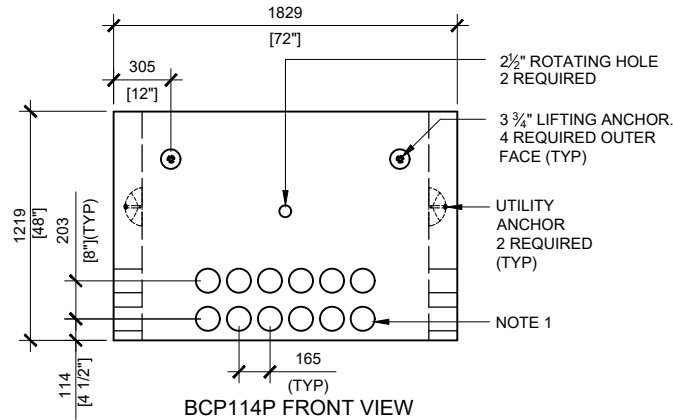
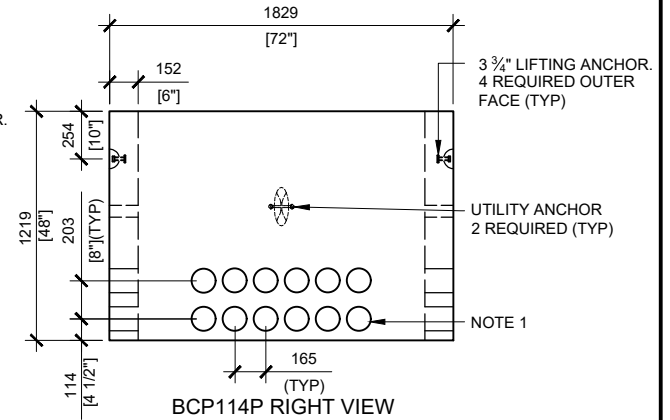


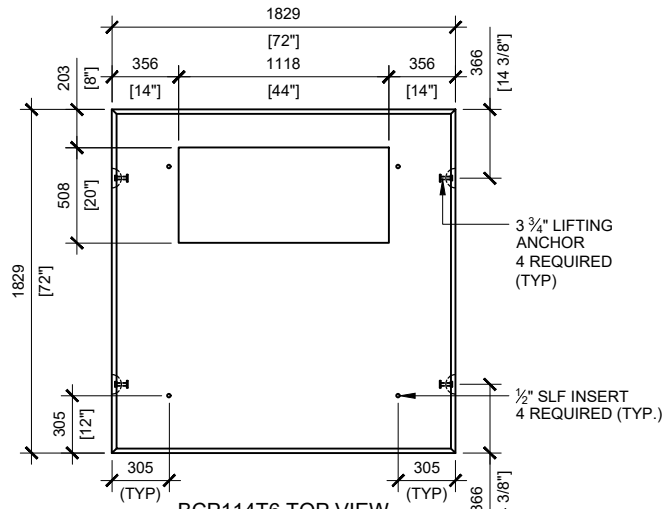
BCP114P TOP VIEW
SCALE:1/40



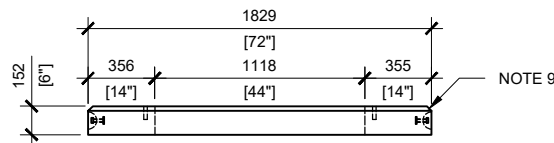
BCP114P FRONT VIEW
SCALE:1/40



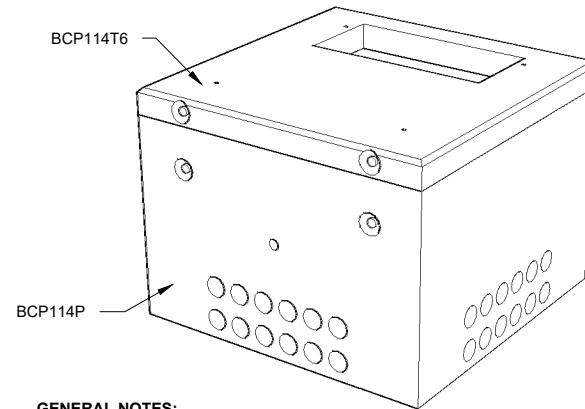
BCP114P RIGHT VIEW
SCALE:1/40



BCP114T6 TOP VIEW
SCALE:1/40



BCP114T6 FRONT VIEW
SCALE:1/40



GENERAL NOTES:

- CABLE ENTRY OPENINGS - 4 3/4" PVC SEALS
- DELIVERY IS MADE BY CRANE-EQUIPPED TRUCKS
- EXCAVATION MUST BE READY, SAFE AND ACCESSIBLE FOR UNLOADING FROM THE REAR OF THE TRUCK.
- MIN OVERHEAD CLEARANCE OF 18FT (5.5 METRES) IS REQUIRED
- ALL UNITS MUST BE HANDLED WITH PROPER LIFTING EQUIPMENT (I.E. SPREADER BAR)
- FOR INSTALLATIONS ON STONE BEDDING, THE ALLOWABLE BEARING PRESSURE AT THE UNDERSIDE OF THE VAULT BOX SECTION SHALL BE A MINIMUM OF 75 KPA (S.L.S.)
- THIS BEARING PRESSURE IS ASSUMED AND SHALL BE CONFIRMED BY A QUALIFIED GEOTECHNICAL ENGINEER PRIOR TO INSTALLATION OF THE VAULT
- THE TRANSFORMER SHOULD BE UNIFORMLY DISTRIBUTED AND THE EDGE OF THE TRANSFORMER BASE SHALL BE SET WITHIN 150MM OF THE INTERIOR DIMENSIONS FOR THE BASE
- TOP EDGES TO HAVE CHAMFER



MANUFACTURED:
LINDSAY, ON
1-800-655-3430

CONCRETE: 35MPa / 5,000PSI
AIR ENTRAINMENT: 5-8%
REINFORCEMENT : STEEL TO CSA
CAN A23.1 / A23.3, G30.18 Fy=400MPa

WEIGHT:
BCP114T6 -2,200lbs / 1,000kg
BCP114P -6,780lbs / 2,760kg

DRAWN BY:
PRASHAN
DATE:
AUG/2023

BCP114HO-02

INCLUDES: BCP114T6/ BCP114P