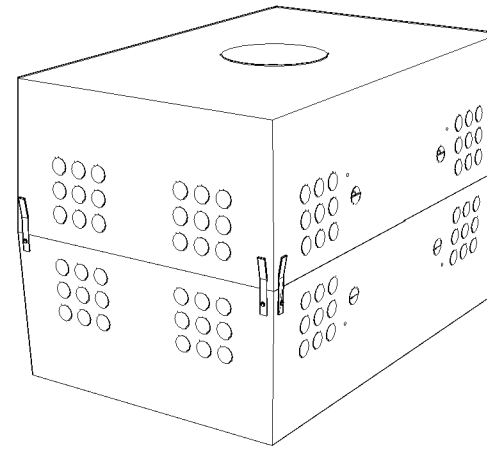


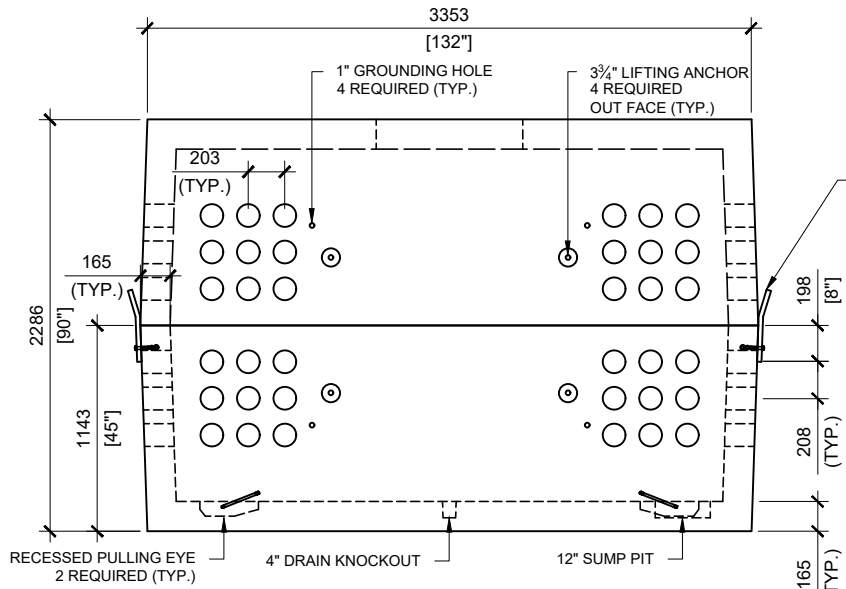
TOP VIEW
SCALE: 1/40



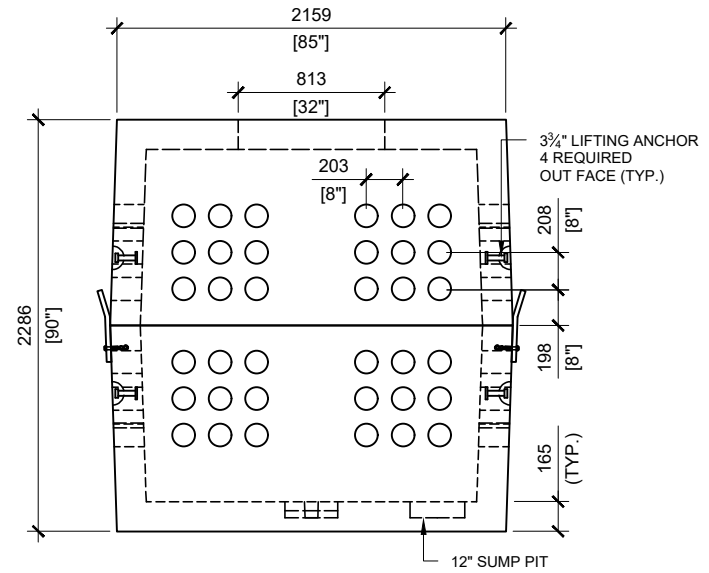
GUIDE PLATE ANCHOR
8 REQUIRED

GENERAL NOTES:

1. CABLE ENTRY OPENINGS - 4-3/4" PVC SEALS
 2. DELIVERY IS MADE BY CRANE-EQUIPPED TRUCKS
 3. EXCAVATION MUST BE READY, SAFE AND ACCESSIBLE FOR UNLOADING FROM THE REAR OF THE TRUCK.
 4. MIN OVERHEAD CLEARANCE OF 18FT (5.5 METRES) IS REQUIRED
 5. ALL UNITS MUST BE HANDLED WITH PROPER LIFTING EQUIPMENT (I.E. SPREADER BAR)
- * TYPICAL USE WOULD REQUIRE JW500 CAST IRON FRAME AND COVER



FRONT VIEW
SCALE: 1/40



RIGHT VIEW
SCALE: 1/40



MANUFACTURED:
LINDSAY, ON
1-800-655-3430

CONCRETE: 35MPa / 5,000PSI
AIR ENTRAINMENT: 5-8%
REINFORCEMENT : STEEL TO CSA
CAN A23.1 / A23.3. G30.18
Fy=400MPa

WEIGHT:
BCP115H20M -29,112 lbs / 13,205 kg
PULLING EYES- 30,000lbs
MAX TENSION EACH

DRAWN BY:
PRASHAN

DATE:
AUG/2023

BCP115H20M

PRECAST CONCRETE UTILITY MANHOLE
DESIGNED TO CL-625-ONT TRUCK LIVE LOADING AS PER CSA S6-14