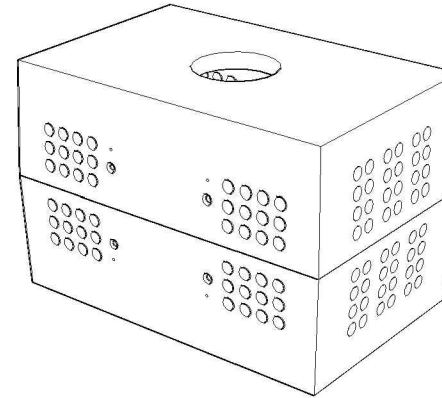


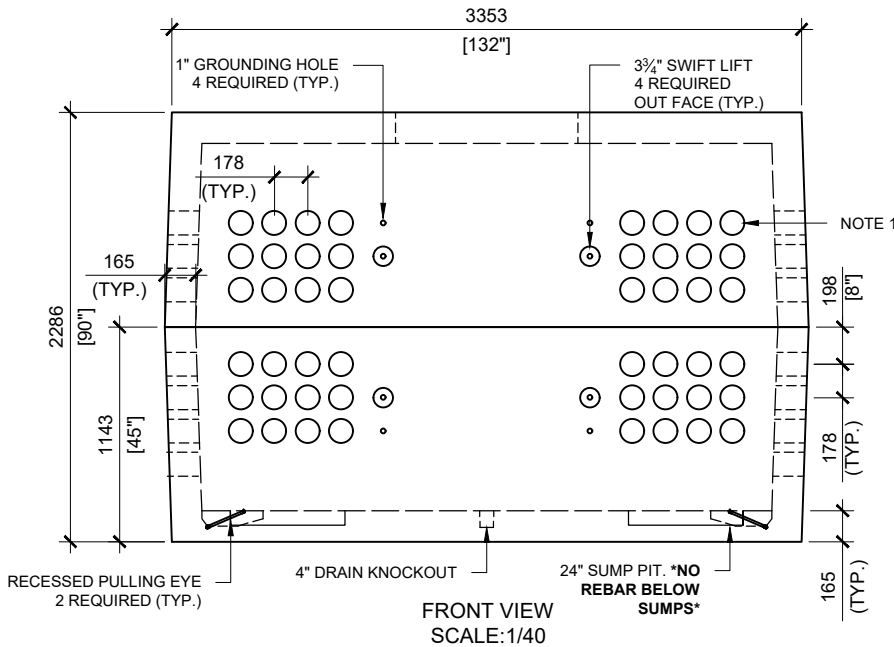
24" SUMP PIT. EMBEDDED 3" INTO CONCRETE. 2 REQ. ***NO REBAR BELOW SUMPS***



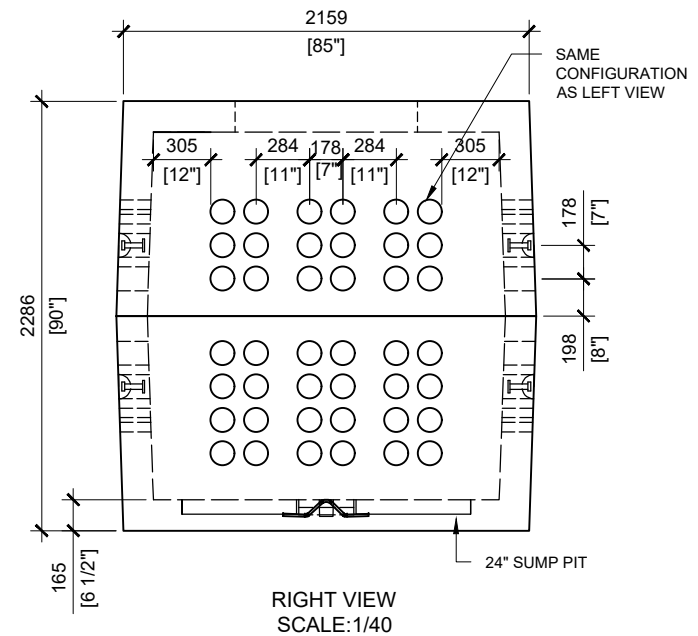
GENERAL NOTES:

1. CABLE ENTRY OPENINGS - 4-3/4" PVC SEALS
2. DELIVERY IS MADE BY CRANE-EQUIPPED TRUCKS
3. EXCAVATION MUST BE READY, SAFE AND ACCESSIBLE FOR UNLOADING FROM THE REAR OF THE TRUCK.
4. MIN OVERHEAD CLEARANCE OF 18FT IS REQUIRED
5. ALL UNITS MUST BE HANDLED WITH PROPER LIFTING EQUIPMENT (I.E. SPREADER BAR)

*** TYPICAL USE WOULD REQUIRE C-23 CAST IRON FRAME AND COVER**



NOTE 1



MANUFACTURED:
BROOKLIN, ON
1-800-655-3430

CONCRETE: 35MPa / 5,000PSI
AIR ENTRAINMENT: 6-8%
REINFORCEMENT : STEEL TO CSA
CAN A23.1 / A23.3. G30.18
Fy=400MPa

WEIGHT:
BCP115H20P -29,000lbs / 10,680kg
PULLING EYES- 30,000lbs
MAX TENSION EACH

DRAWN BY:
S.RIMLAND
DATE:
AUG/2017

BCP115H20P
PRECAST CONCRETE UTILITY MANHOLE
DESIGNED TO CL-625-ONT TRUCK LIVE LOADING AS PER CSA S6-14