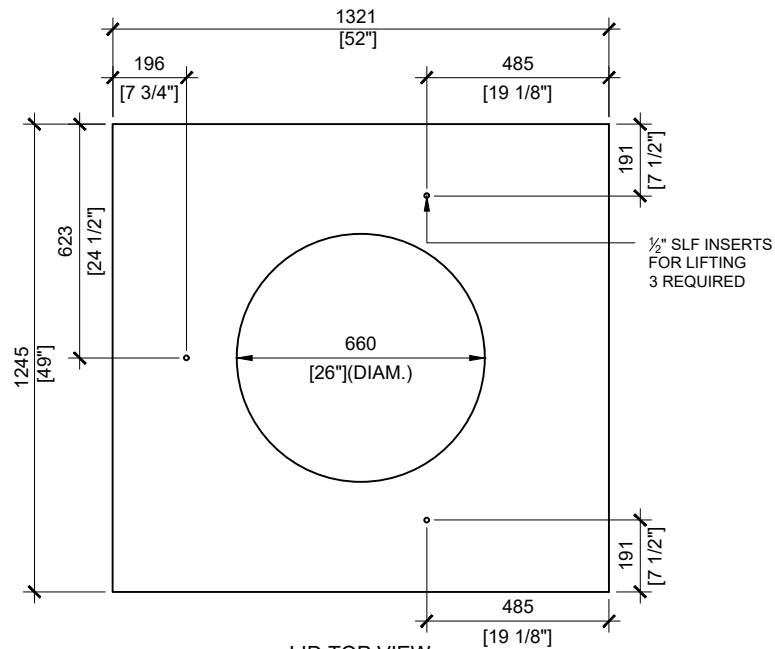


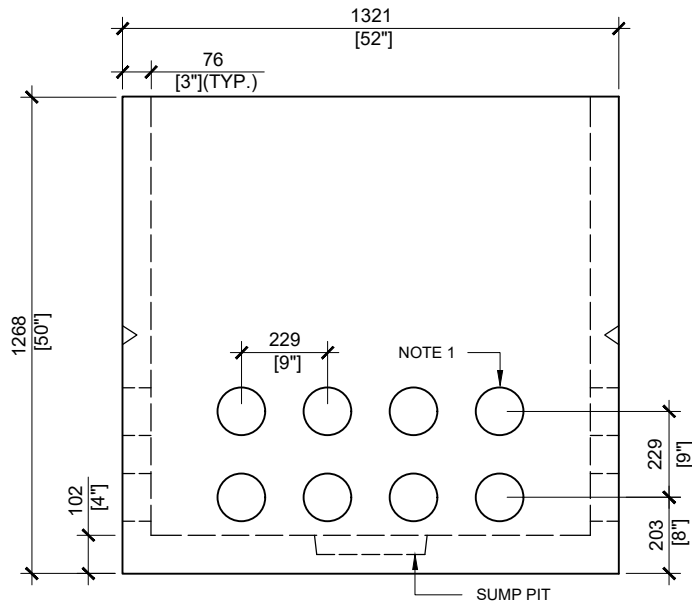
TOP VIEW
SCALE: 1/20



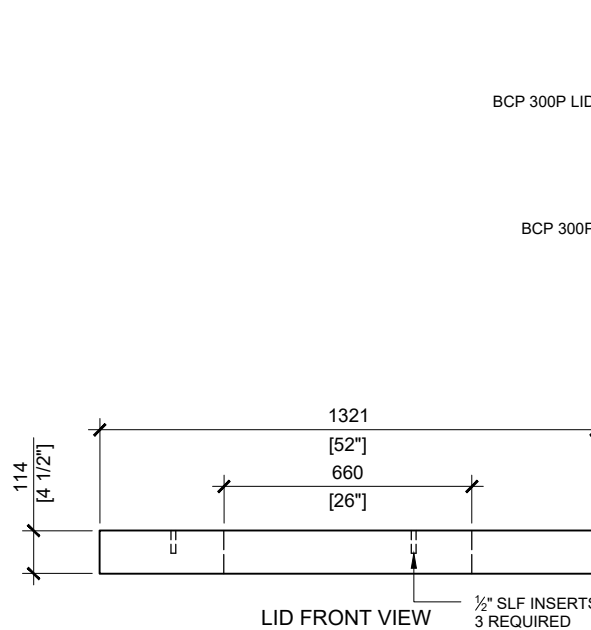
LID TOP VIEW
SCALE: 1/20

GENERAL NOTES:

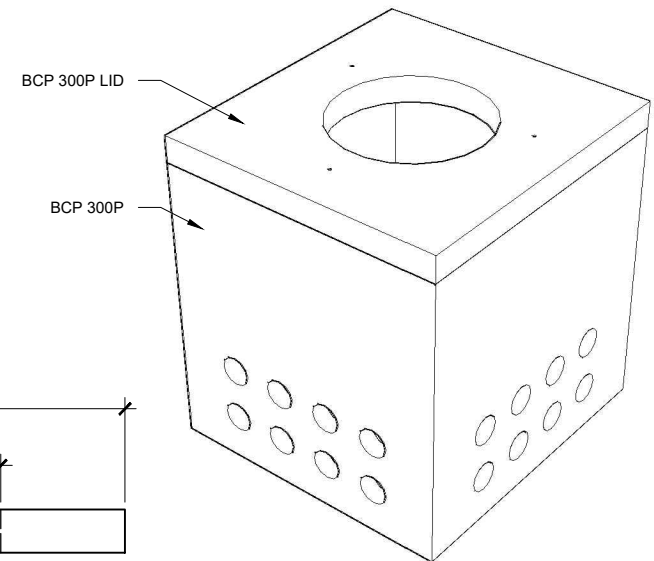
1. CABLE ENTRY OPENINGS - 4-3/4" PVC SEALS
 2. DELIVERY IS MADE BY CRANE-EQUIPPED TRUCKS
 3. EXCAVATION MUST BE READY, SAFE AND ACCESSIBLE FOR UNLOADING FROM THE REAR OF THE TRUCK.
 4. MIN OVERHEAD CLEARANCE OF 18FT (5.5 METRES) IS REQUIRED
 5. ALL UNITS MUST BE HANDLED WITH PROPER LIFTING EQUIPMENT (I.E. SPREADER BAR)
- * TYPICAL USE WOULD REQUIRE JW150 CAST IRON FRAME AND COVER (OPSD 401.01)



FRONT VIEW
SCALE: 1/20



LID FRONT VIEW
SCALE: 1/20



MANUFACTURED:
BROOKLIN, ON
1-800-655-3430

CONCRETE: 35MPa / 5,000PSI
AIR ENTRAINMENT: 5-8%
REINFORCEMENT: STEEL TO CSA CAN
A23.1 / A23.3. G30.18 Fy=400MPa

WEIGHT:
BCP300P- 3,675lbs / 1,710kg

DRAWN BY:
N.CHAN

DATE:
JAN/2021

BCP300P

PRECAST CONCRETE JUNCTION BOX