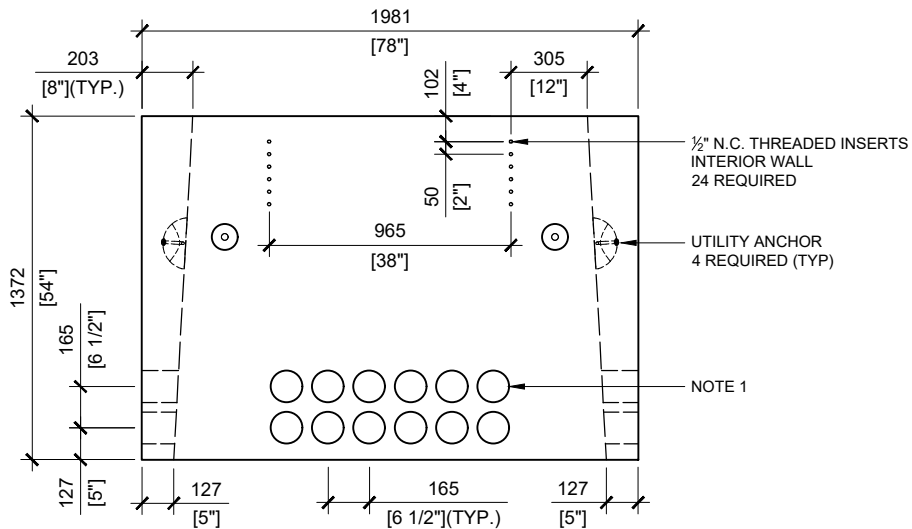
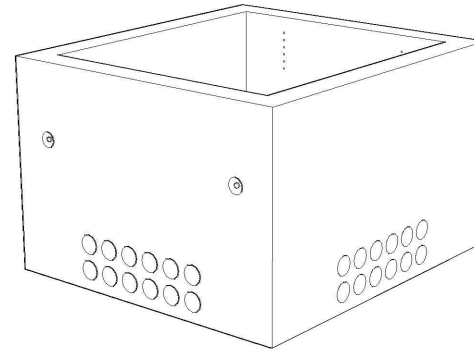


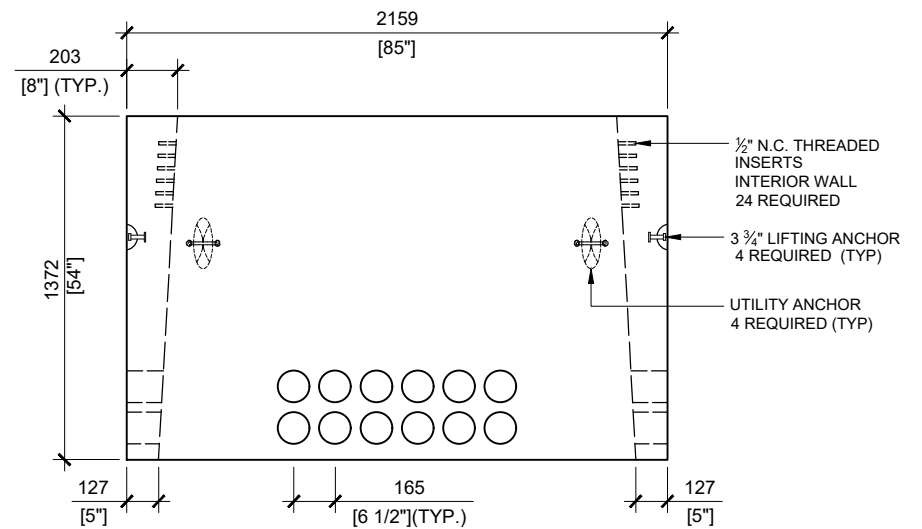
TOP VIEW
SCALE:1/30

GENERAL NOTES:

1. CABLE ENTRY OPENINGS - 4-3/4" PVC SEALS
2. DELIVERY IS MADE BY CRANE-EQUIPPED TRUCKS
3. EXCAVATION MUST BE READY, SAFE AND ACCESSIBLE FOR UNLOADING FROM THE REAR OF THE TRUCK.
4. MIN OVERHEAD CLEARANCE OF 18FT (5.5 METRES) IS REQUIRED
5. ALL UNITS MUST BE HANDLED WITH PROPER LIFTING EQUIPMENT (I.E. SPREADER BAR)



FRONT VIEW
SCALE:1/30



RIGHT VIEW
SCALE:1/30



MANUFACTURED:
BROOKLIN, ON
1-800-655-3430

CONCRETE: 35MPa / 5,000PSI
AIR ENTRAINMENT: 5-8%
REINFORCEMENT : STEEL TO
CSA CAN A23.1 / A23.3. G30.18
Fy=400MPa

WEIGHT:
BCP330PB -8,540lbs / 3,883kgs

DRAWN BY:
N.CHAN

DATE:
JUL/2020

BCP330PB

FOUNDATION FOR PADMOUNT TRANSFORMER