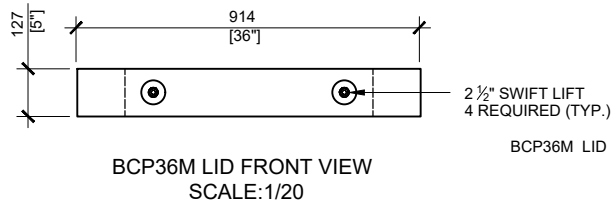
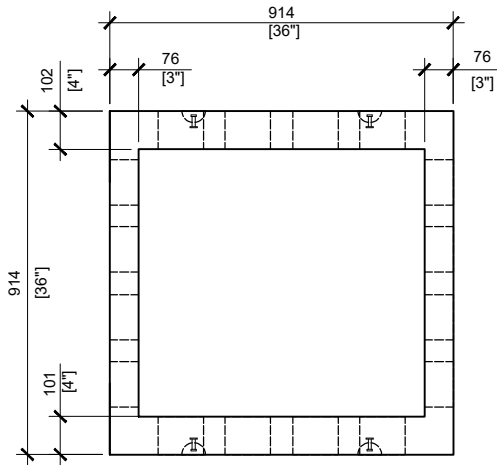
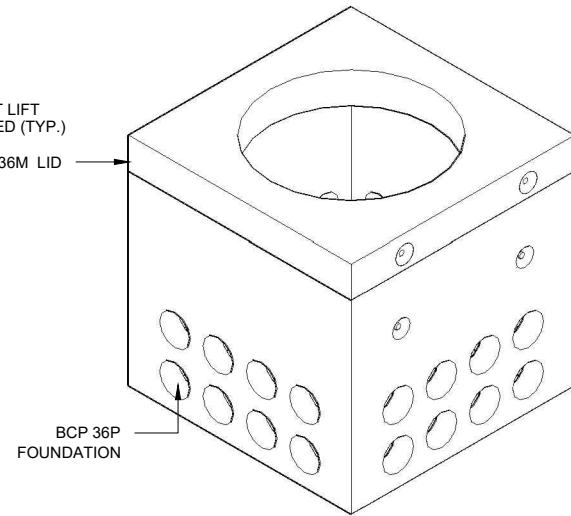


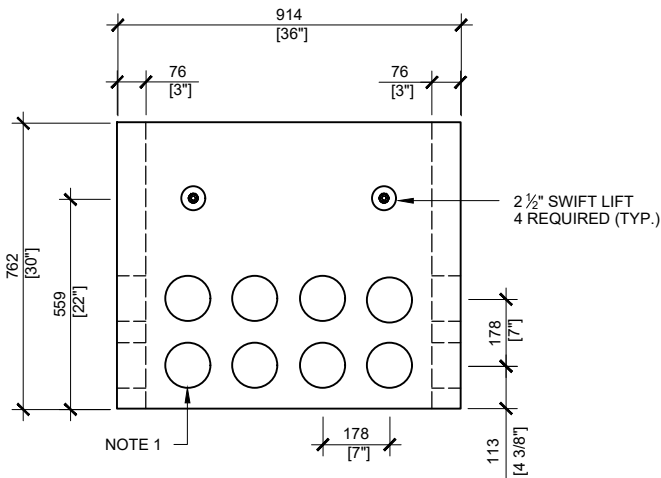
BCP36M LID VIEW
SCALE:1/20



BCP36M LID FRONT VIEW
SCALE:1/20



BCP36P TOP VIEW
SCALE:1/20



BCP36P FRONT VIEW
SCALE:1/20

GENERAL NOTES:

1. CABLE ENTRY OPENINGS - 4-3/4" PVC SEALS
2. DELIVERY IS MADE BY CRANE-EQUIPPED TRUCKS
3. EXCAVATION MUST BE READY, SAFE AND ACCESSIBLE FOR UNLOADING FROM THE REAR OF THE TRUCK.
4. MIN OVERHEAD CLEARANCE OF 18FT IS REQUIRED
5. ALL UNITS MUST BE HANDLED WITH PROPER LIFTING EQUIPMENT (I.E. SPREADER BAR)
6. AVAILABLE WITH SOLID LID FOR USE AS SPLICING CHAMBER

* TYPICAL USE WOULD REQUIRE JW150 CAST IRON FRAME AND COVER (OPSD 401.01)



MANUFACTURED:
BROOKLIN, ON
1-800-655-3430

CONCRETE: 35MPa / 5,000PSI
AIR ENTRAINMENT: 6-8%
REINFORCEMENT : STEEL TO CSA CAN
A23.1 / A23.3. G30. 18 Fy=400MPa

WEIGHT:
BCP36P- 970lbs / 440kg
BCP36M LID- 295lbs / 134kg

DRAWN BY:
S.RIMLAND

DATE:
FEB/2019

BCP36M

PRECAST CONCRETE JUNCTION BOX.