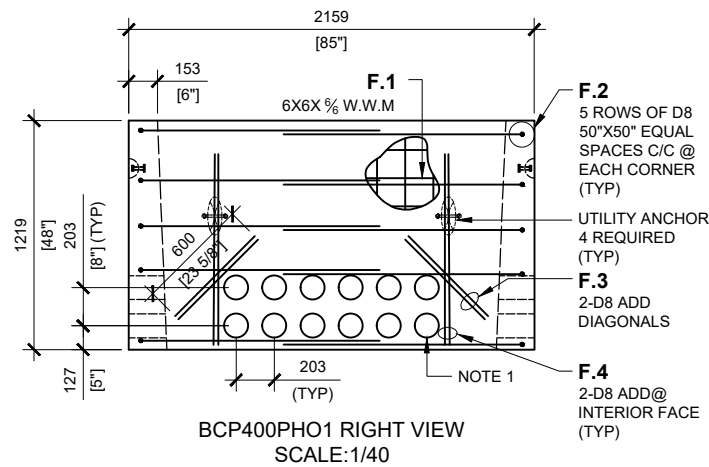
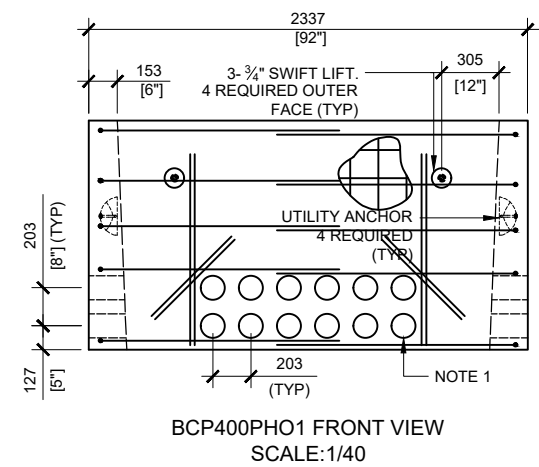


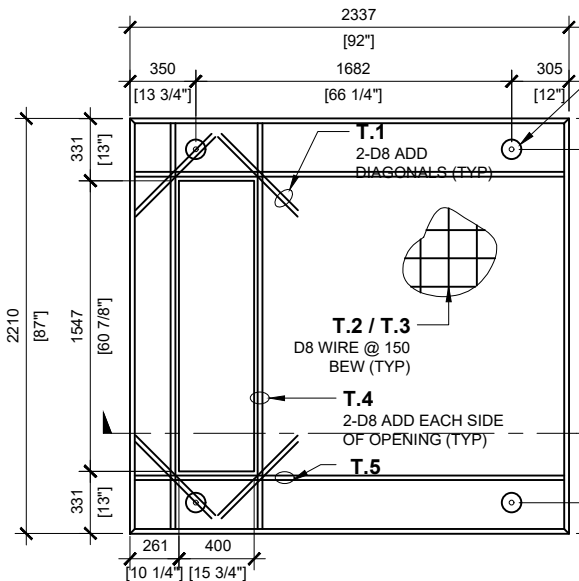
BCP400PHO1 TOP VIEW
SCALE:1/40



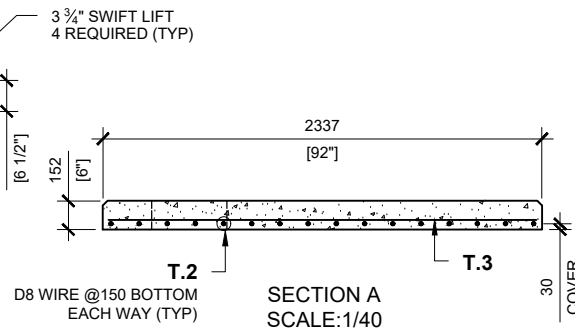
BCP400PHO1 RIGHT VIEW
SCALE:1/40



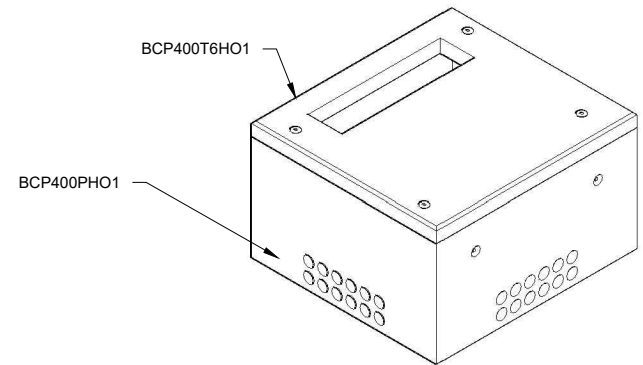
BCP400PHO1 FRONT VIEW
SCALE:1/40



BCP400T6HO1 MODIFIED
TOP VIEW
SCALE:1/40



SECTION A
SCALE:1/40



GENERAL NOTES:

1. CABLE ENTRY OPENINGS - 4 3/4" PVC SEALS
2. DELIVERY IS MADE BY CRANE-EQUIPPED TRUCKS
3. EXCAVATION MUST BE READY, SAFE AND ACCESSIBLE FOR UNLOADING FROM THE REAR OF THE TRUCK.
4. MIN OVERHEAD CLEARANCE OF 18FT IS REQUIRED
5. ALL UNITS MUST BE HANDLED WITH PROPER LIFTING EQUIPMENT (I.E. SPREADER BAR)
6. FOR INSTALLATIONS ON STONE BEDDING, THE ALLOWABLE BEARING PRESSURE AT THE UNDERSIDE OF THE VAULT BOX SECTION SHALL BE A MINIMUM OF 150KPA (S.L.S.)
7. THIS BEARING PRESSURE IS ASSUMED AND SHALL BE CONFIRMED BY A QUALIFIED GEOTECHNICAL ENGINEER PRIOR TO INSTALLATION OF THE VAULT
8. ALL EXPOSED EDGES TO HAVE 25MM CHAMFER

MAXIMUM LOAD CAPACITY:

- EQUIPMENT WEIGHT: 64.3kN (14,450LBS)



MANUFACTURED:
BROOKLIN, ON
1-800-655-3430

CONCRETE: 35MPa / 5,000PSI
AIR ENTRAINMENT: 6-8%
REINFORCEMENT : STEEL TO CSA CAN
A23.1 / A23.3. G30.18 Fy=400MPa

WEIGHT:
BCP400T6HO1 - 3,246 lbs / 1,472kg
BCP400PHO1 - 7,700lbs / 3,500kg

DRAWN BY:
S.RIMLAND

DATE:
JUL/2018

BCP400HO-01

INCLUDES: BCP400T6HO1/ BCP400PHO1