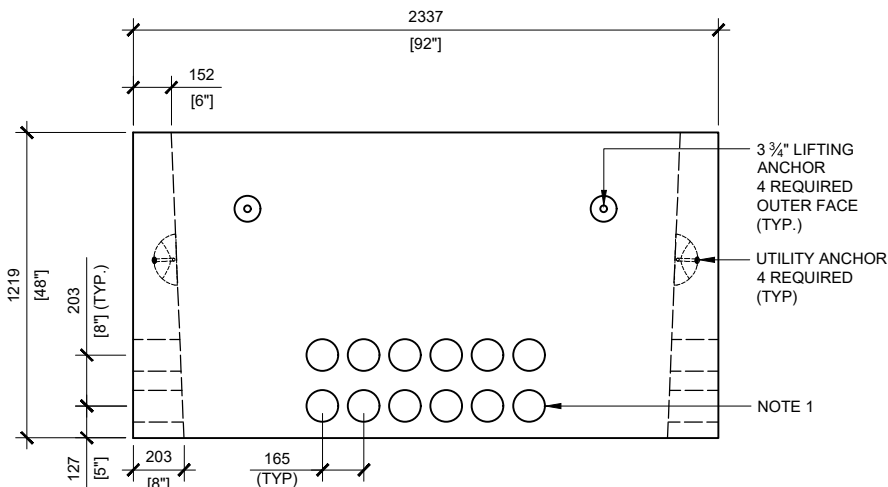
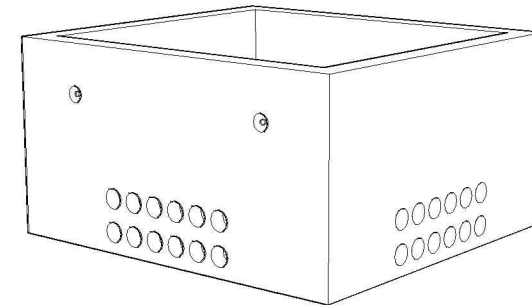


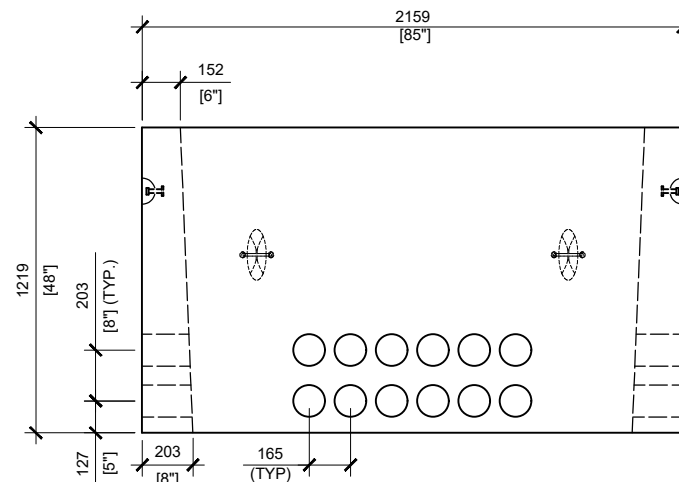
TOP VIEW  
SCALE:1/40

**GENERAL NOTES:**

1. CABLE ENTRY OPENINGS - 4-3/4" PVC SEALS
2. DELIVERY IS MADE BY CRANE-EQUIPPED TRUCKS
3. EXCAVATION MUST BE READY, SAFE AND ACCESSIBLE FOR UNLOADING FROM THE REAR OF THE TRUCK.
4. MIN OVERHEAD CLEARANCE OF 18FT (5.5 METRES) IS REQUIRED
5. ALL UNITS MUST BE HANDLED WITH PROPER LIFTING EQUIPMENT (I.E. SPREADER BAR)



FRONT VIEW  
SCALE:1/40



RIGHT VIEW  
SCALE:1/40



**MANUFACTURED:**  
BROOKLIN, ON  
1-800-655-3430

**CONCRETE:** 35MPa / 5,000PSI  
**AIR ENTRAINMENT:** 5-8%  
**REINFORCEMENT:** STEEL TO CSA CAN  
A23.1 / A23.3. G30.18 Fy=400MPa

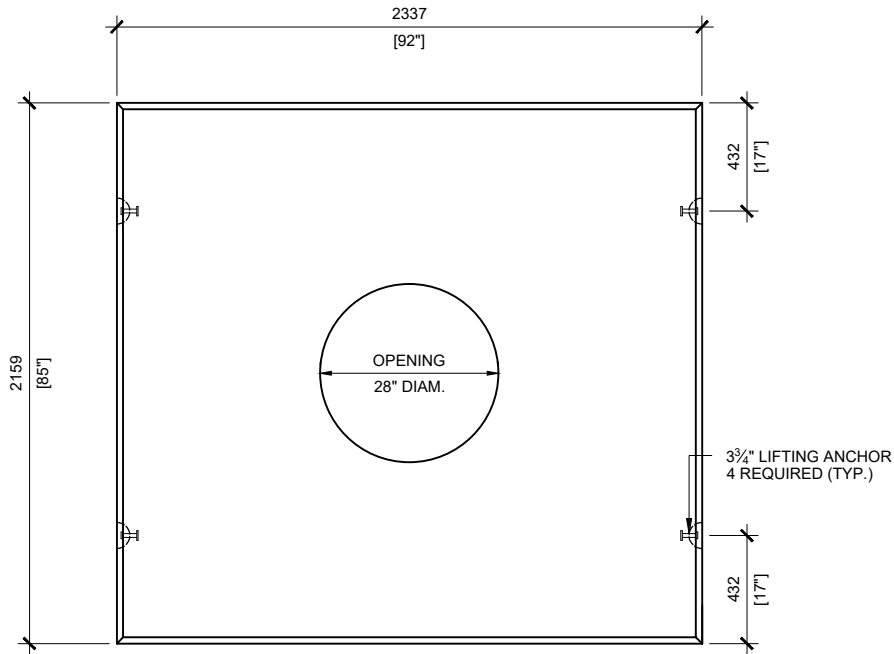
**WEIGHT:**  
BCP400P -7,600lbs / 3,450kg

**DRAWN BY:**  
N.CHAN

**DATE:**  
MAY/2020

**BCP400P**

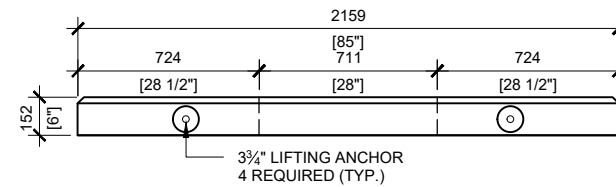
FOUNDATION FOR PADMOUNT TRANSFORMER



TOP VIEW  
SCALE:1/30



FRONT VIEW  
SCALE:1/30

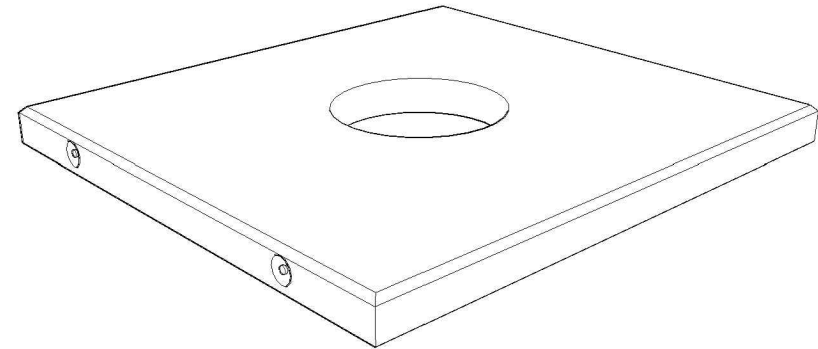


RIGHT VIEW  
SCALE:1/30

**GENERAL NOTES:**

1. DELIVERY IS MADE BY CRANE-EQUIPPED TRUCKS
2. EXCAVATION MUST BE READY, SAFE AND ACCESSIBLE FOR UNLOADING FROM THE REAR OF THE TRUCK.
3. MIN OVERHEAD CLEARANCE OF 18FT (5.5 METRES) IS REQUIRED
4. ALL UNITS MUST BE HANDLED WITH PROPER LIFTING EQUIPMENT (I.E. SPREADER BAR)

\* TYPICAL USE WOULD REQUIRE JW150 CAST IRON FRAME AND COVER (OPSD 401.01)



MANUFACTURED:  
BROOKLIN, ON  
1-800-655-3430

CONCRETE: 35MPa / 4600PSI  
AIR ENTRAINMENT: 5-8%  
REINFORCEMENT : STEEL TO CSA CAN  
A23.1 / A23.3. G30, 18 Fy=400MPa

WEIGHT:  
BCP 400T6 -3,327lbs / 1,509kg

DRAWN BY:  
N.CHAN

DATE:  
JUL/2020

**BCP400T6MH**

PRECAST TOP FOR UTILITY MANHOLE