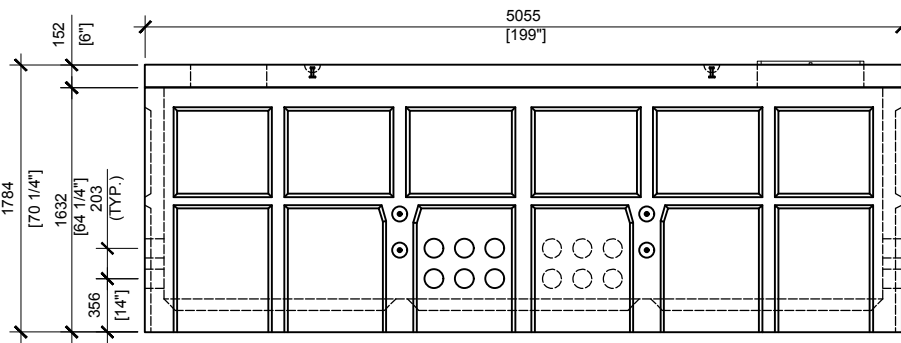
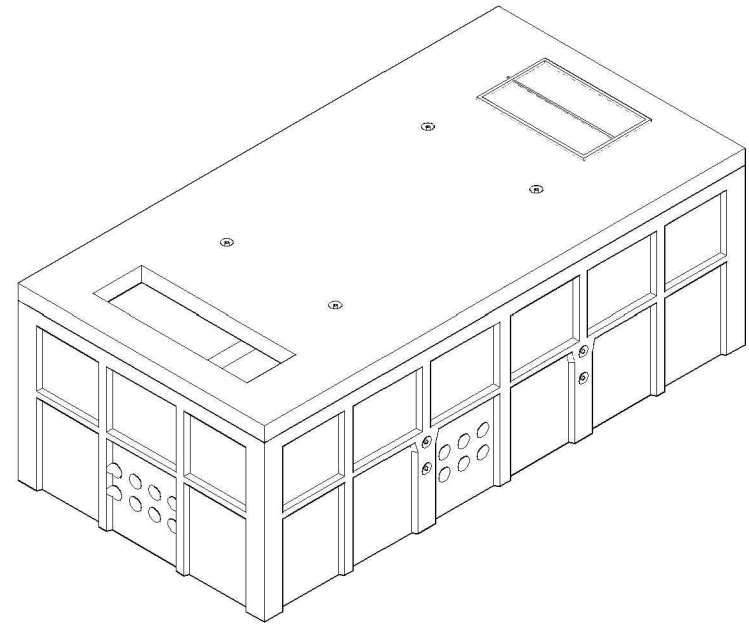
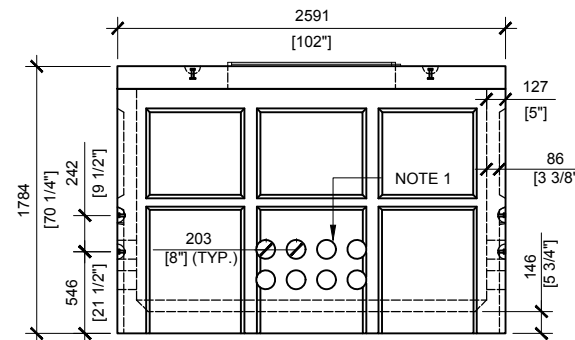


TOP VIEW
SCALE: 1/50



FRONT VIEW
SCALE: 1/50



RIGHT VIEW
SCALE: 1/50

GENERAL NOTES:

1. CABLE ENTRY OPENINGS - 4-3/4" PVC SEALS
2. DELIVERY IS MADE BY CRANE-EQUIPPED TRUCKS
3. EXCAVATION MUST BE READY, SAFE AND ACCESSIBLE FOR UNLOADING FROM THE REAR OF THE TRUCK.
4. MIN OVERHEAD CLEARANCE OF 18FT IS REQUIRED
5. ALL UNITS MUST BE HANDLED WITH PROPER LIFTING EQUIPMENT (I.E. SPREADER BAR)



MANUFACTURED BY:
BROOKLIN, ON
1-800-655-3430

CONCRETE: 35MPa / 5,000PSI
AIR ENTRAINMENT: 6-8%
REINFORCEMENT : STEEL TO CSA
CAN A23.1 / A23.3. G30. 18 Fy=400MPa

WEIGHT:
LID - 9,206lbs / 4,175kgs
BOTTOM - 21,285lbs / 9,655kgs
BCP505V - 30,491lbs / 13,930kg

DRAWN BY:
S.RIMLAND
DATE:
AUG/2017

BCP505V

FOUNDATION FOR PADMOUNT TRANSFORMER