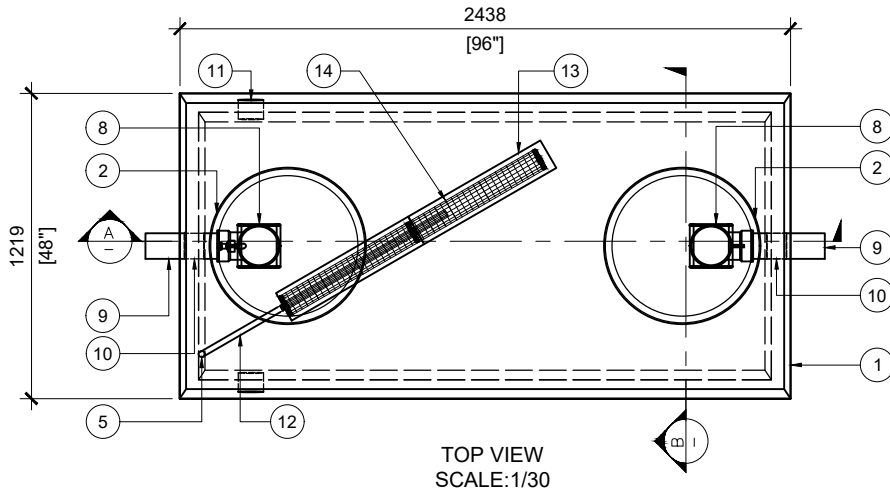


### BTT-1325-BCP REACTOR

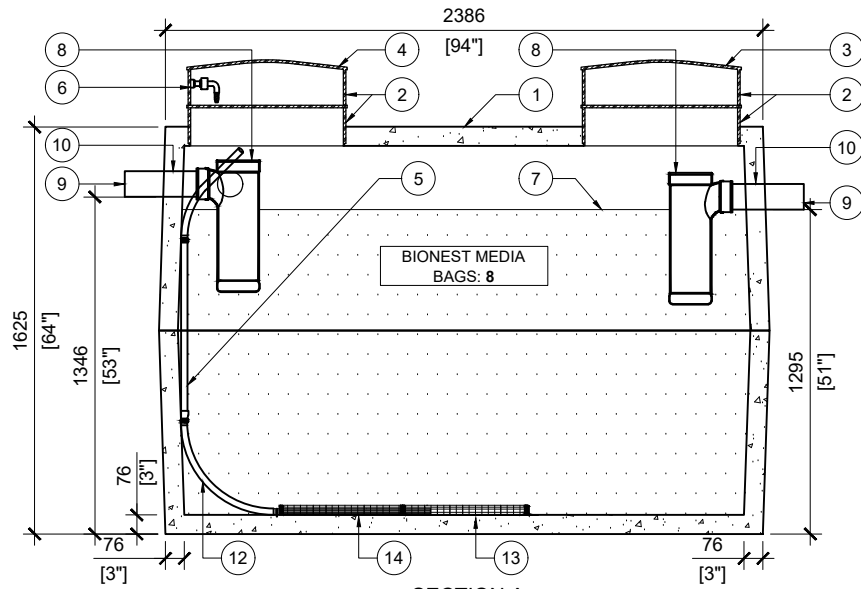
POS.	ITEM #	DESCRIPTION	QUANTITY
1	413565	BTT-1325-BCP BIONEST REACTOR	1
2	408167	POLYLOK PLASTIC RISER 24" dia X 6"h	4
3	450046	POLYLOK LID 24" dia - VENTED COVER	1
4	450046	POLYLOK LID 24" dia - DOMED	1
5	*SUPPLIED BY BIONEST*	FLEXIBLE AIR DIFFUSER (0.75m)	1
6	*SUPPLIED BY BIONEST*	AIR LINE PIPE	1
7	*SUPPLIED BY BIONEST*	BIONEST MEDIA BAG	8
8	408144	TUF-TITE EF-6" T-BAFFLE	2
9	408038	4 x 10" SOLID SEWER PIPE	2
10	112167	4" CAST.A.SEAL #452.0450	2
11	112622	4" CAST.A.SEAL #452.0450 (CLOSED FACE)	2
12	*SUPPLIED BY BIONEST*	Ø1-1/2" PVC ELBOW 90° BELL-END TO FACE UPWARD	1
13	*SUPPLIED BY BIONEST*	ABS PLASTIC STRIPS 5" x 24"	2
14	*SUPPLIED BY BIONEST*	AIR DIFFUSER CAGE 3.5" x 23"	2

**GENERAL NOTES:**

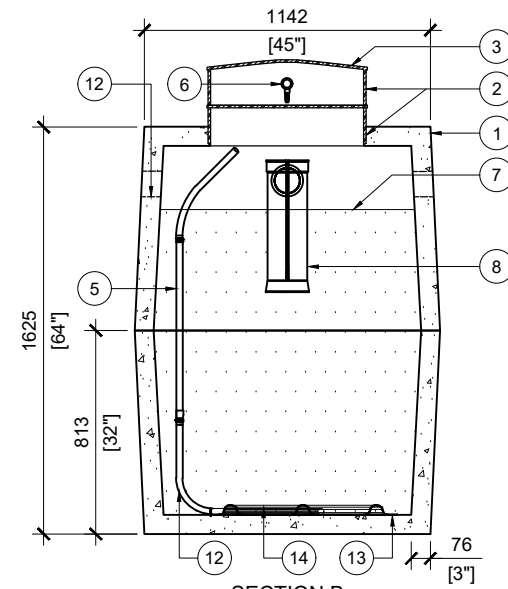
1. UNITS ARE SEALED WITH BUTYL TAPE AT THE JOINTS
2. DELIVERY IS MADE BY CRANE-EQUIPPED TRUCKS
3. EXCAVATION MUST BE READY, SAFE AND ACCESSIBLE FOR UNLOADING FROM THE REAR OF THE TRUCK.
4. MIN OVERHEAD CLEARANCE OF 18FT (5.5 METRES) IS REQUIRED
5. ALL UNITS MUST BE HANDLED WITH PROPER LIFTING EQUIPMENT
6. MAXIMUM BURIAL DEPTH = 1 METRE IN FIRM SOIL AWAY FROM ANY VEHICULAR TRAFFIC



TOP VIEW  
SCALE: 1/30



SECTION A  
SCALE: 1/30



SECTION B  
SCALE: 1/30



MANUFACTURED:  
BROOKLIN, ON  
1-800-655-3430

CONCRETE: 35MPa at 28 days/5000PSI  
AIR ENTRAINMENT: 5-8%  
REINFORCEMENT: STEEL TO CSA CAN  
A23.1 /A23.3 G30.18 Fy=400MPa

UNIT WEIGHT: 5,720lbs / 2,594kg  
CPA CERTIFIED  
MEETS CAN/CSA-B66  
BNQ CERTIFIED

DRAWN BY:  
N.CHAN

DATE:  
APR/2020

**BTT-1325-BCP BIONEST REACTOR**  
2700L / 600 IMPERIAL GAL. BIONEST TANK

WORKING CAPACITY: 2854L TO INVERT OF OUTLET  
TOTAL CAPACITY: 3423L TO UNDERSIDE OF CHAMBER LID