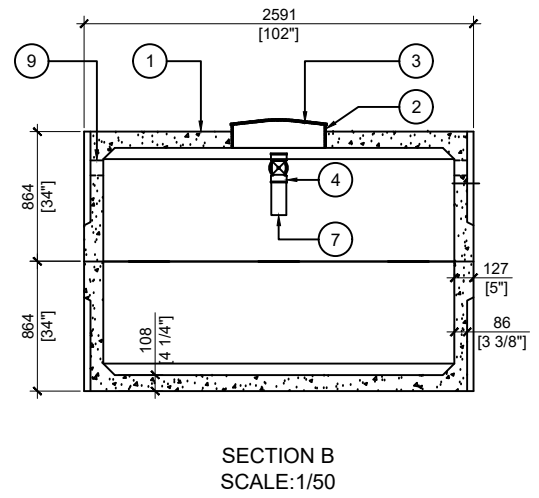
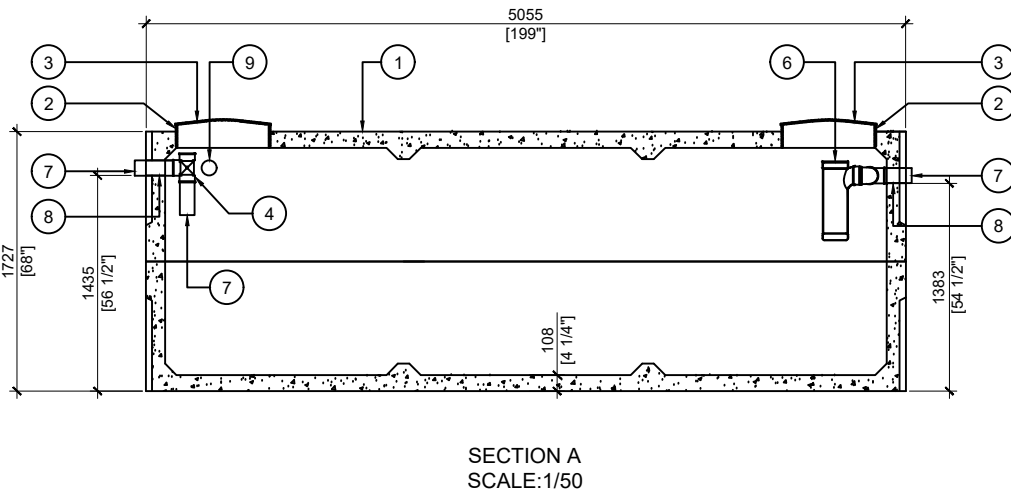


### BTT-6250-BCP PRIMARY TREATMENT

POS.	ITEM #	DESCRIPTION	QUANTITY
1	413587	BTT-6250-BCP PRIMARY TREATMENT	1
2	408167	POLYLOK PLASTIC RISER 24"dia X 6"th	2
3	450027	POLYLOK LID 24"dia - DOMED	2
4	408041	4" PVC TEE	2
5	408048	4" PVC ELBOW 90 deg.	2
6	408144	TUF-TITE EFFLUENT FILTER 6" C/W T-BAFF	2
7	408038	4 x 10" SOLID SEWER PIPE	3
8	112167	4" CAST.A.SEAL #452.0450	2
9	112622	4" CAST.A.SEAL #452.0450 (CLOSED FACE)	2

- GENERAL NOTES:**
1. UNITS ARE SEALED WITH BUTYL TAPE AT THE JOINTS
  2. DELIVERY IS MADE BY CRANE-EQUIPPED TRUCKS
  3. EXCAVATION MUST BE READY, SAFE AND ACCESSIBLE FOR UNLOADING FROM THE REAR OF THE TRUCK.
  4. MIN OVERHEAD CLEARANCE OF 18FT (5.5 METRES) IS REQUIRED
  5. ALL UNITS MUST BE HANDLED WITH PROPER LIFTING EQUIPMENT
  6. MAXIMUM BURIAL DEPTH = 1 METRE IN FIRM SOIL AWAY FROM ANY VEHICULAR TRAFFIC
  7. MUST BE SHIPPED WITH "BTT-6250 REACTOR"



MANUFACTURED:  
BROOKLIN, ON  
1-800-655-3430

CONCRETE: 35MPa at 28 days / 5000PSI  
AIR ENTRAINMENT: 5-8%  
REINFORCEMENT: STEEL TO CSA CAN  
A23.1 /A23.3 G30.18 Fy=400MPa

WEIGHT: 26,142lbs / 11,857kg  
BOTTOM: 13,281lbs / 6,024kg  
TOP: 12,861lbs / 5,833kg  
MEETS CAN/CSA-B66  
BNQ CERTIFIED

DRAWN BY:  
N.CHAN  
DATE:  
APR/2020

**BTT-6250-BCP PRIMARY TREATMENT**  
13650L / 3000 IMPERIAL GAL. BIONEST TANK  
WORKING CAPACITY: 14,213L TO INVERT OF OUTLET  
TOTAL CAPACITY: 16,765L TO UNDERSIDE OF CHAMBER LID