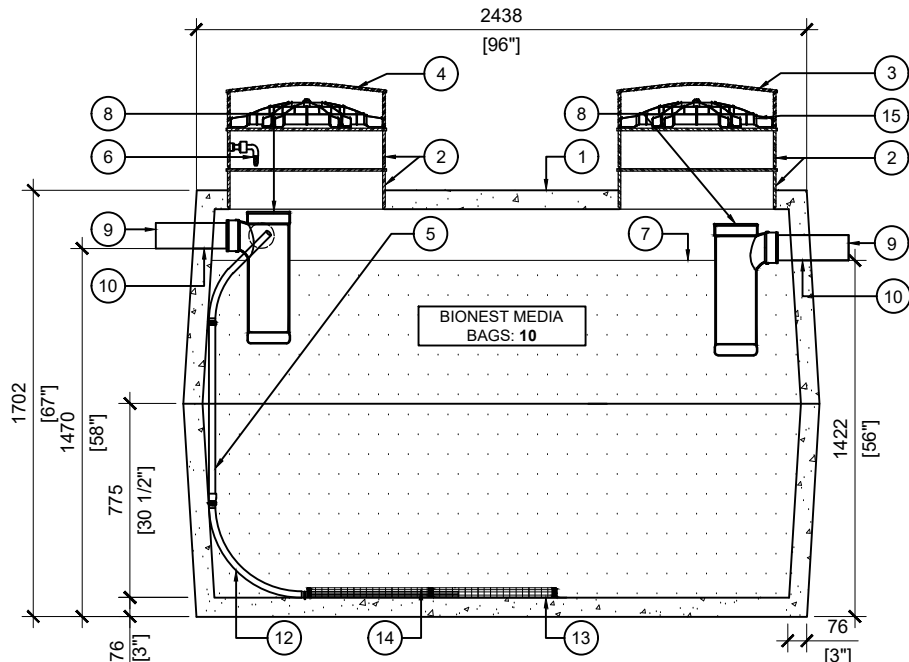
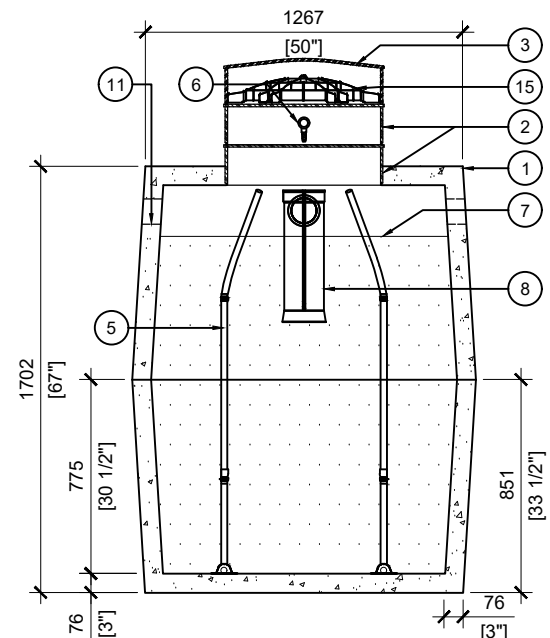


TOP VIEW
SCALE: 1/30



SECTION A
SCALE: 1/30



SECTION B
SCALE: 1/30

BTT-1800-BCP BIONEST REACTOR

POS.	ITEM #	DESCRIPTION	QUANTITY
1	413567	BTT-1800-BCP BIONEST REACTOR	1
2	408167	POLYLOK PLASTIC RISER 24" dia X 6" h	6
3	450046	POLYLOK LID 24" dia - VENTED COVER	1
4	450046	POLYLOK LID 24" dia - DOMED	1
5	*SUPPLIED BY BIONEST*	FLEXIBLE AIR DIFFUSER (0.65m)	2
6	*SUPPLIED BY BIONEST*	AIR LINE PIPE	1
7	*SUPPLIED BY BIONEST*	BIONEST MEDIA BAG	10
8	408144	TUF-TITE EF-6" T-BAFFLE	2
9	112707	4 x 16" SOLID SEWER PIPE	2
10	112167	4" CAST. A. SEAL #452.0450	2
11	112622	4" CAST. A. SEAL #452.0450 (CLOSED FACE)	2
12	*SUPPLIED BY BIONEST*	Ø1-1/2" PVC ELBOW 90° BELL-END TO FACE UPWARD	2
13	*SUPPLIED BY BIONEST*	ABS PLASTIC STRIPS 5" x 24"	4
14	*SUPPLIED BY BIONEST*	AIR DIFFUSER CAGE 3.5" x 23"	4
15	450103	POLYLOK 24" SAFETY LID	2

GENERAL NOTES:

- UNITS ARE SEALED WITH BUTYL TAPE AT THE JOINTS
- DELIVERY IS MADE BY CRANE-EQUIPPED TRUCKS
- EXCAVATION MUST BE READY, SAFE AND ACCESSIBLE FOR UNLOADING FROM THE REAR OF THE TRUCK.
- MIN OVERHEAD CLEARANCE OF 18FT (5.5 METRES) IS REQUIRED
- ALL UNITS MUST BE HANDLED WITH PROPER LIFTING EQUIPMENT
- MAXIMUM BURIAL DEPTH = 1 METRE IN FIRM SOIL AWAY FROM ANY VEHICULAR TRAFFIC



MANUFACTURED:
BROOKLIN, ON
1-800-655-3430

CONCRETE: 35MPa at 28 days / 5000PSI
AIR ENTRAINMENT: 5-8%
REINFORCEMENT: STEEL TO CSA CAN
A23.1 / A23.3 G30.18 Fy=400MPa

UNIT WEIGHT: 6,490lbs / 2,943kg
MEETS CAN/CSA-B66
BNQ CERTIFIED

DRAWN BY:
JAY PATEL

DATE:
MAY/2022

BTT-1800-BCP BIONEST REACTOR
3600L / 800 IMPERIAL GAL. BIONEST TANK

WORKING CAPACITY: 3723L TO INVERT OF OUTLET
TOTAL CAPACITY: 4258L TO UNDERSIDE OF CHAMBER LID