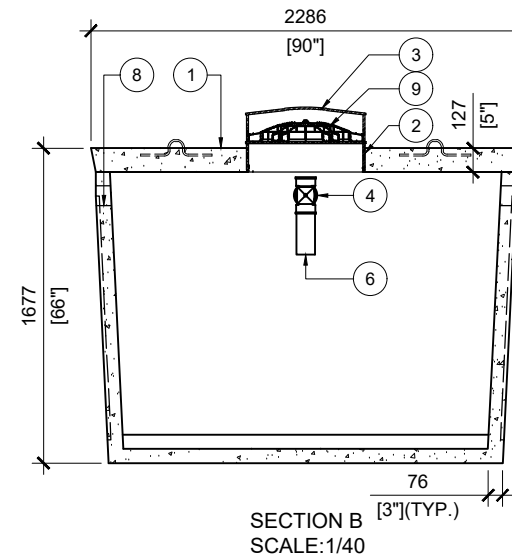
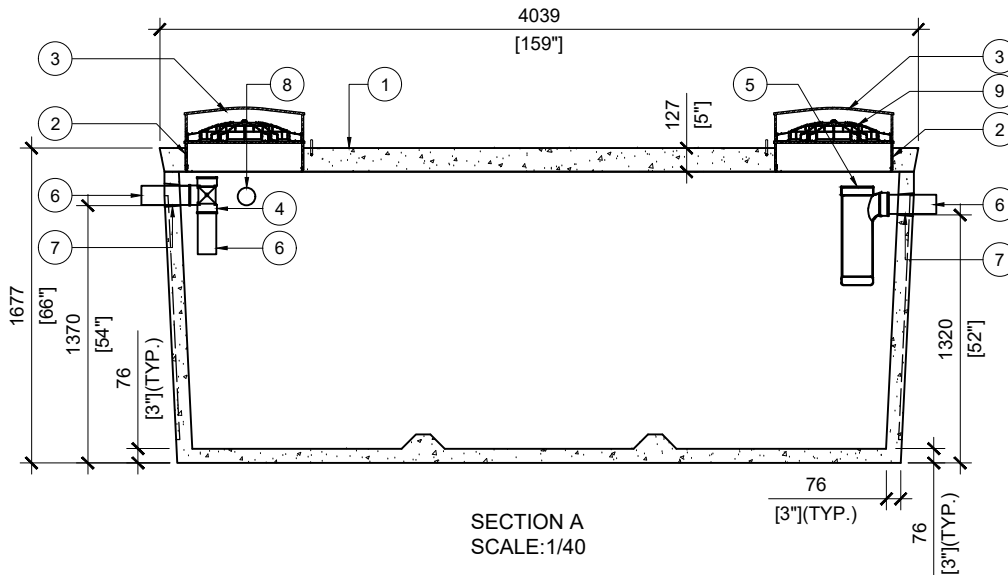


BTT-3900-BCP PRIMARY TREATMENT

POS.	ITEM #	DESCRIPTION	QUANTITY
1	413574	BTT-3900-BCP PRIMARY TREATMENT	1
2	408167	POLYLOK PLASTIC RISER 24"dia X 6"h	4
3	450027	POLYLOK LID 24"dia - DOMED	2
4	408041	4" PVC TEE	1
5	408144	TUF-TITE EFFLUENT FILTER 6" C/W T-BAFF	1
6	112707	4 x 16" SOLID SEWER PIPE	3
7	112167	4" CAST. A. SEAL #452.0450	2
8	112622	4" CAST. A. SEAL #452.0450 (CLOSED FACE)	2
9	450103	POLYLOK 24" SAFETY LID	2

GENERAL NOTES:

1. UNITS ARE SEALED WITH BUTYL TAPE AT THE JOINTS
2. DELIVERY IS MADE BY CRANE-EQUIPPED TRUCKS
3. EXCAVATION MUST BE READY, SAFE AND ACCESSIBLE FOR UNLOADING FROM THE REAR OF THE TRUCK.
4. MIN OVERHEAD CLEARANCE OF 18FT (5.5 METRES) IS REQUIRED
5. ALL UNITS MUST BE HANDLED WITH PROPER LIFTING EQUIPMENT
6. MAXIMUM BURIAL DEPTH = 1 METRE IN FIRM SOIL AWAY FROM ANY VEHICULAR TRAFFIC
7. MUST BE SHIPPED WITH "BTT - 3900 REACTOR"



MANUFACTURED:
BROOKLIN, ON
1-800-655-3430

CONCRETE: 35MPa at 28 days/5000PSI
AIR ENTRAINMENT: 5-8%
REINFORCEMENT: STEEL TO CSA CAN
A23.1 /A23.3 G30.18 Fy=400MPa

WEIGHT: 17,895lbs / 8,120kg
MEETS CAN/CSA-B66
BNQ CERTIFIED

DRAWN BY:
JAY PATEL

DATE:
MAY/2022

BTT-3900-BCP PRIMARY TREATMENT
9000L / 2000 IMPERIAL GAL. BIONEST TANK

WORKING CAPACITY: 9357L TO INVERT OF OUTLET
TOTAL CAPACITY: 11168L TO UNDERSIDE OF CHAMBER LID