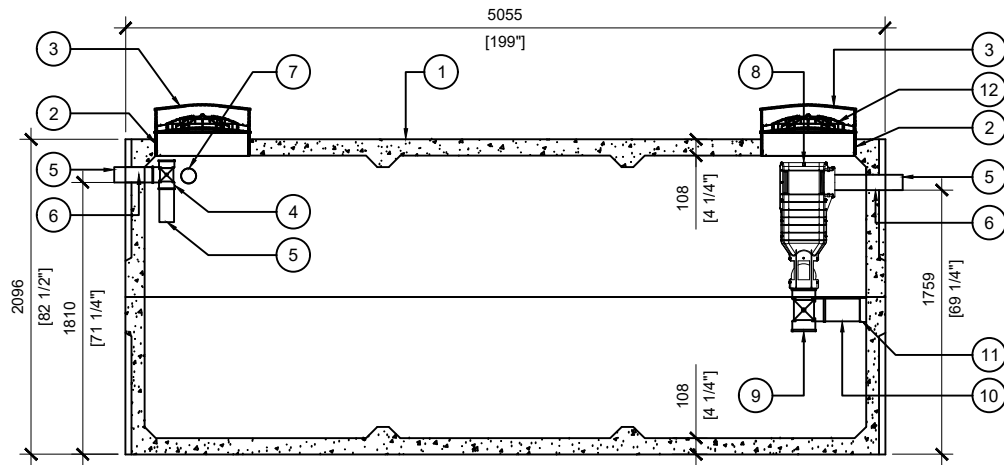


TOP VIEW  
SCALE: 1/50

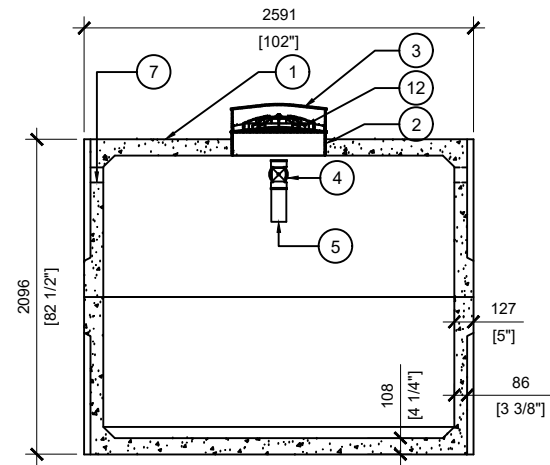
### BTT-8900-BCP PRIMARY TREATMENT

POS.	ITEM #	DESCRIPTION	QUANTITY
1	413585	BTT-8900-BCP PRIMARY TREATMENT	1
2	408167	POLYLOK PLASTIC RISER 24"dia X 6"h	4
3	450027	POLYLOK LID 24"dia - DOMED	2
4	408041	4" PVC TEE	2
5	112707	4 x 16" SOLID SEWER PIPE	3
6	112167	4" CAST.A.SEAL #452.0450	2
7	112622	4" CAST.A.SEAL #452.0450 (CLOSED FACE)	2
8	106083	PL-525 FILTER	1
9	100000	6" PVC TEE	1
10	100000	6 x 10" SOLID SEWER PIPE	1
11	408049	6" PVC END CAP	1
12	450103	POLYLOK 24" SAFETY LID	2

- GENERAL NOTES:**
- UNITS ARE SEALED WITH BUTYL TAPE AT THE JOINTS
  - DELIVERY IS MADE BY CRANE-EQUIPPED TRUCKS
  - EXCAVATION MUST BE READY, SAFE AND ACCESSIBLE FOR UNLOADING FROM THE REAR OF THE TRUCK.
  - MIN OVERHEAD CLEARANCE OF 18FT (5.5 METRES) IS REQUIRED
  - ALL UNITS MUST BE HANDLED WITH PROPER LIFTING EQUIPMENT
  - MAXIMUM BURIAL DEPTH = 1 METRE IN FIRM SOIL AWAY FROM ANY VEHICULAR TRAFFIC
  - MUST BE SHIPPED WITH "BTT-8900 REACTOR"



SECTION A  
SCALE: 1/50



SECTION B  
SCALE: 1/50



MANUFACTURED:  
BROOKLIN, ON  
1-800-655-3430

CONCRETE: 35MPa at 28 days / 5000PSI  
AIR ENTRAINMENT: 5-8%  
REINFORCEMENT: STEEL TO CSA CAN  
A23.1 /A23.3 G30.18 Fy=400MPa

WEIGHT: 31,140lbs / 14,125kg  
BOTTOM: 15,780lbs / 7,157kg  
TOP: 15,360lbs / 6,967kg  
MEETS CAN/CSA-B66  
BNQ CERTIFIED

DRAWN BY:  
JAY PATEL  
  
DATE:  
MAY/2022

**BTT-8900-BCP PRIMARY TREATMENT**  
18000L / 4000 IMPERIAL GAL. BIONEST TANK  
  
WORKING CAPACITY: 18,471L TO INVERT OF OUTLET  
TOTAL CAPACITY: 21006L TO UNDERSIDE OF CHAMBER LID