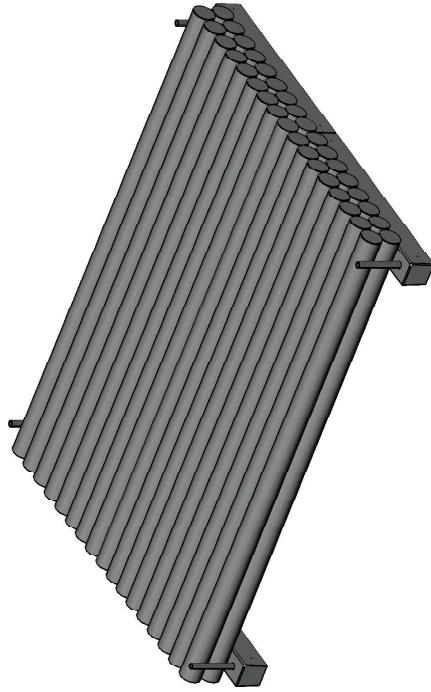


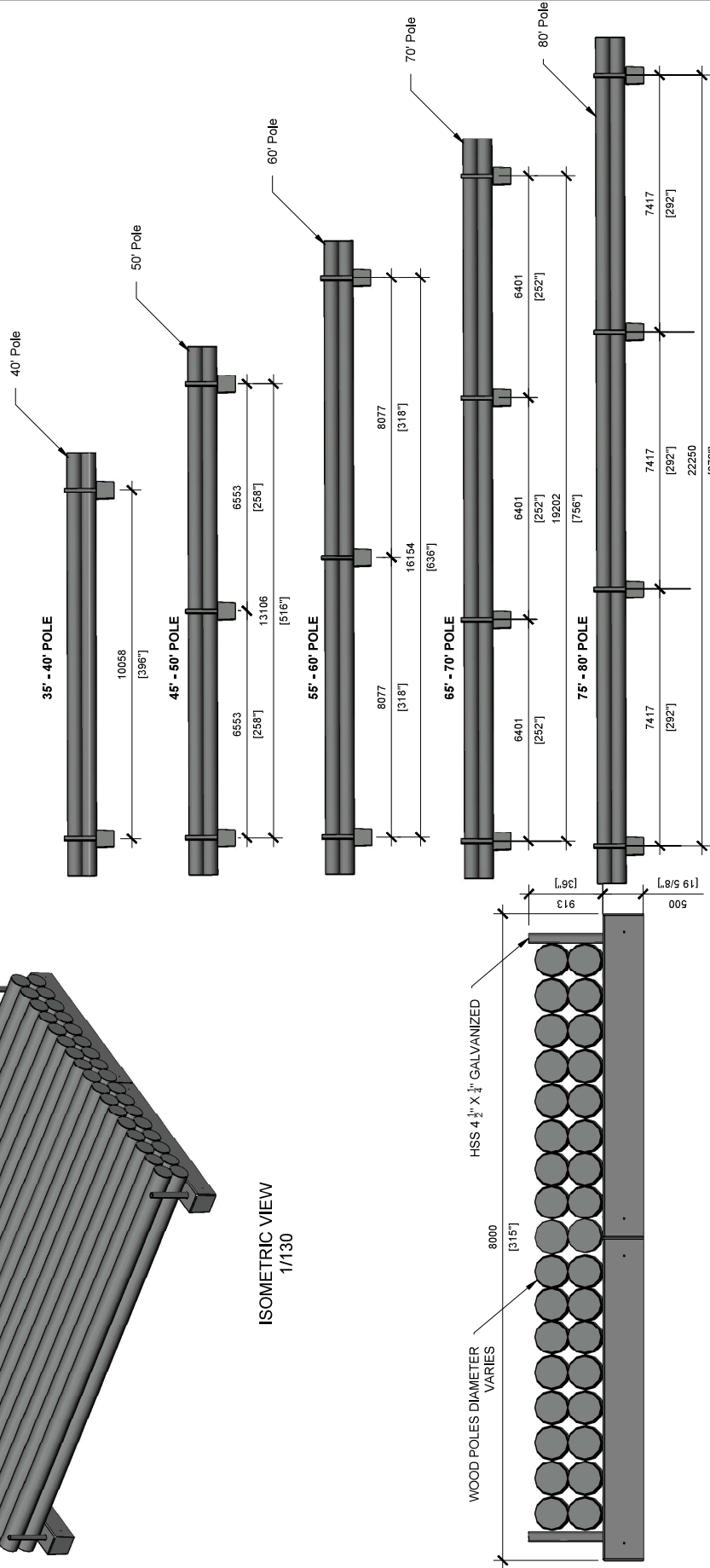
UTILITY POLE BUNK GUIDE

GENERAL NOTES:

1. LOAD CAPACITY: 450 KG/M3
2. HYDRO POLE STORAGE HEIGHT NOT TO EXCEED THE HEIGHT OF HSS. 4 1/2" X 3/4" GALVANIZED PIPE OF 913MM.
3. 150 kPa (SLS) MINIMUM SOIL BEARING CAPACITY.



ISOMETRIC VIEW
1/130



FRONT VIEW
1/75

DETAILED SIDE VIEW
1/175

<p>BROOKLIN CONCRETE PRODUCTS</p>	<p>MANUFACTURED: BROOKLIN, ON 1-800-655-9430</p>	<p>CONCRETE: 35MPa at 28 days/5000PSI AIR ENTRAINMENT: 5-8% REINFORCEMENT: STEEL TO CSA CAN A23.1 /A23.3 G30.18 Fy=400MPa</p>	<p>APPROX. WEIGHT: 5,390 lbs / 2,450 kg HSS: ASTM A600-18 GRADE B/C</p>	<p>SHEET: 1/3 DWG NO:</p>	<p>DRAWN BY: JAY PATEL DATE: MAY/2022</p>	<p>PRECAST UTILITY POLE BUNK PLACEMENT OF POLES</p>
	<p>1/175</p>					