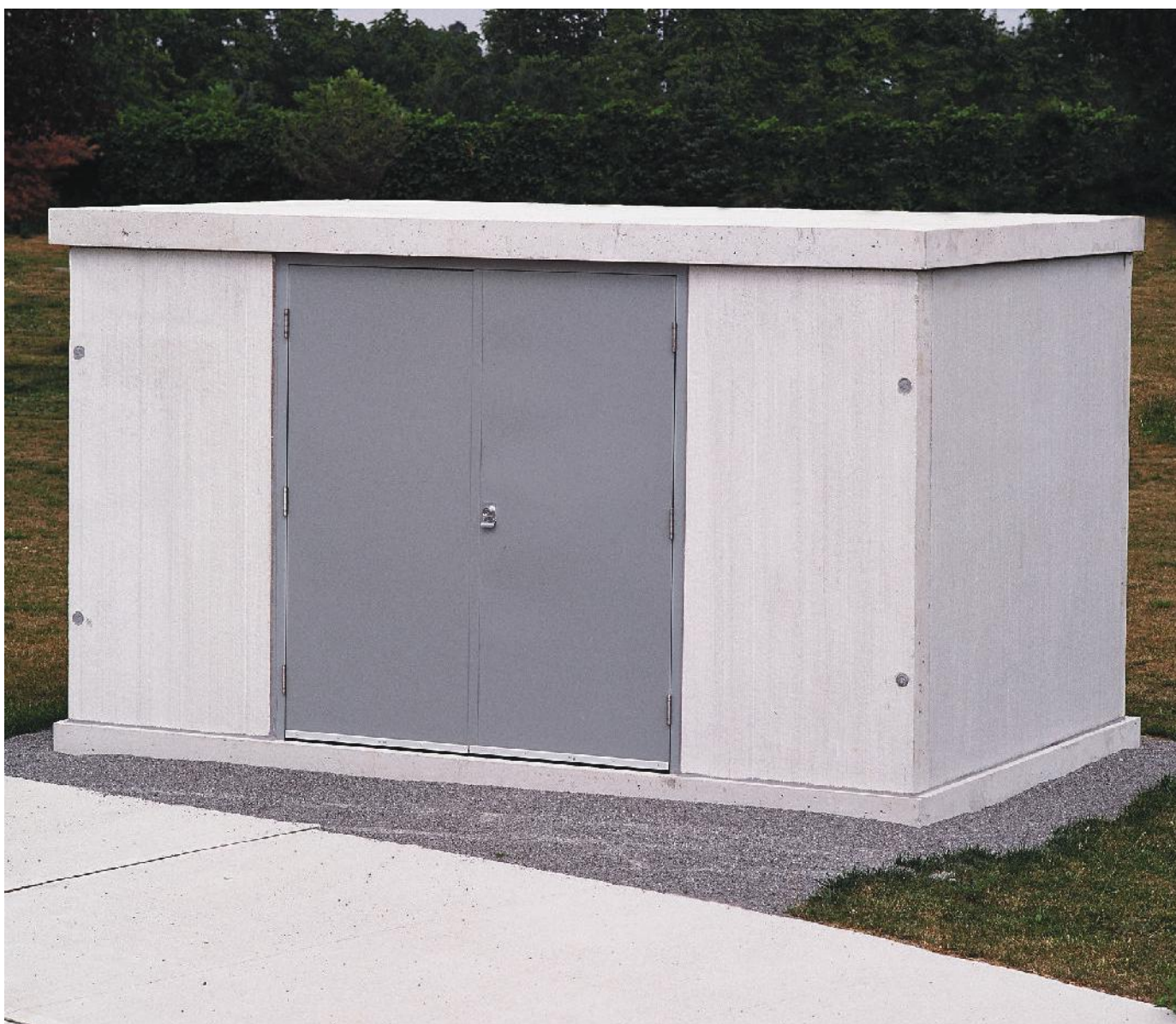


STORAGE STRUCTURES

PRODUCT GUIDE



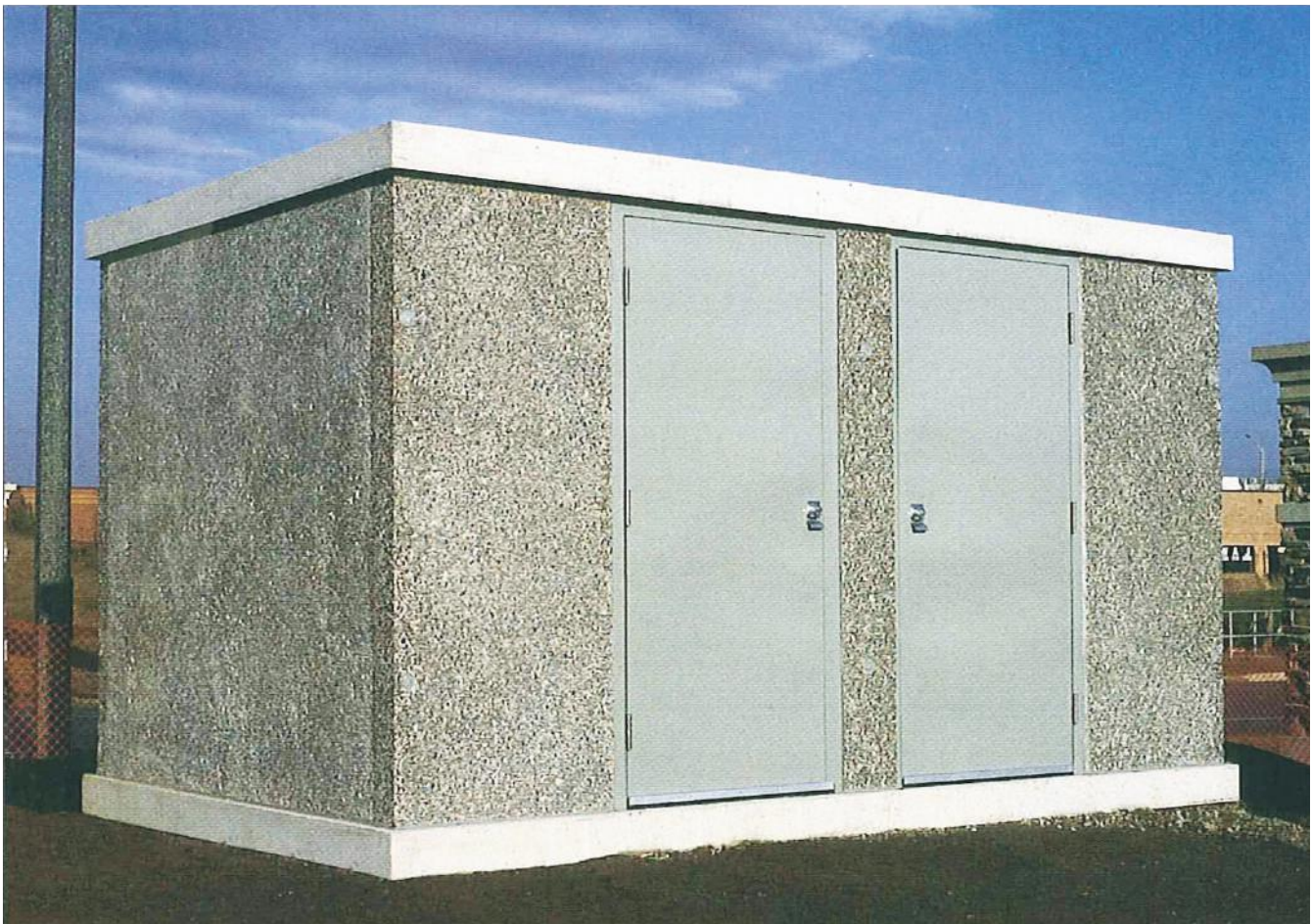
CONCRETE STORAGE STRUCTURES BUILT TO PROTECT

Tamper Resistant
Maintenance Free
Fireproof
Portable

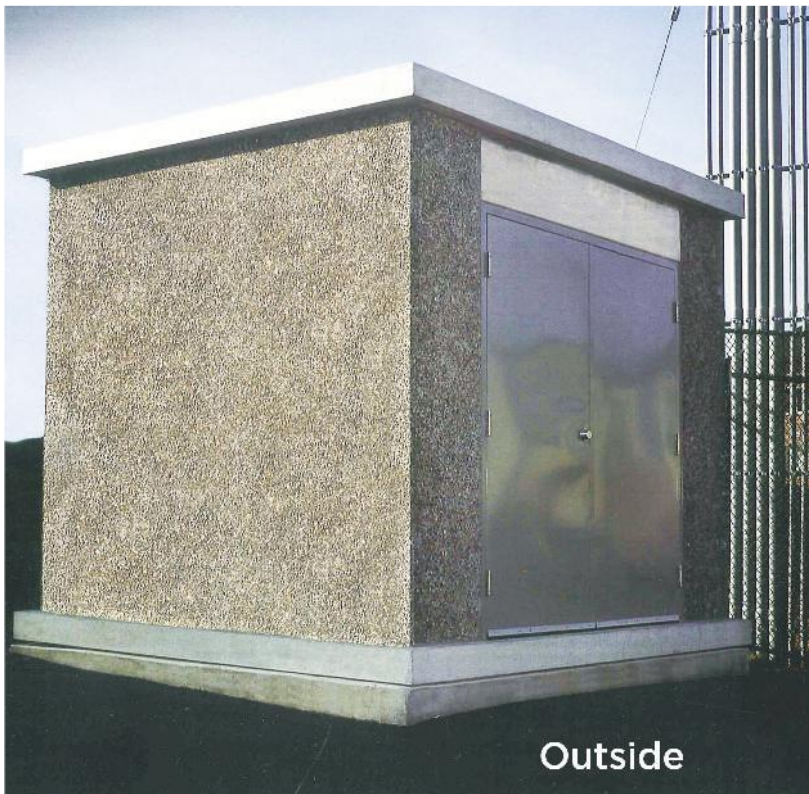
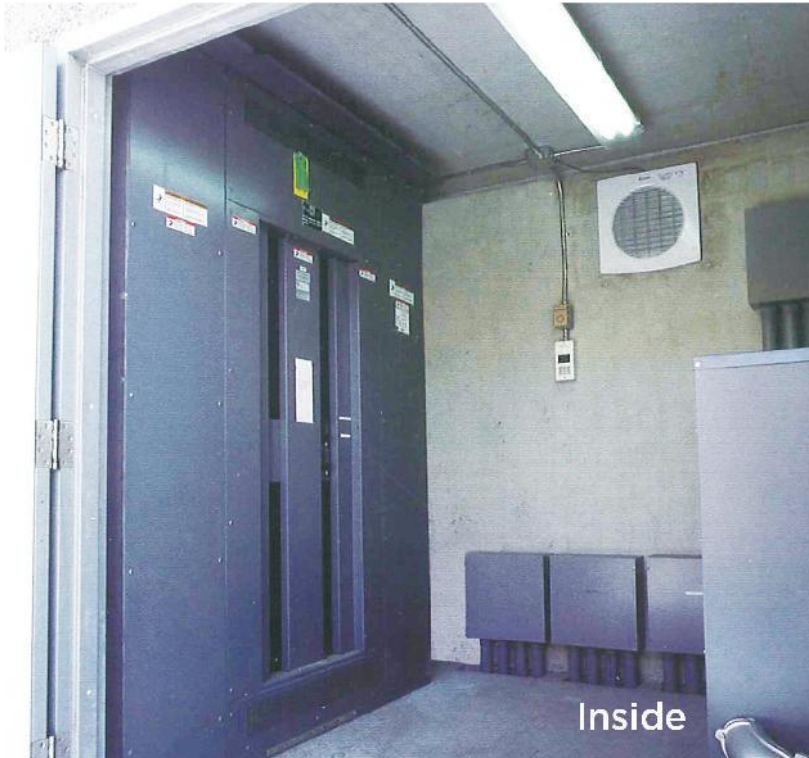
STRONG AND VERSATILE

Brooklin Concrete storage structures are built to protect your tools, equipment and products from skillful thieves and vandals, while withstanding the harshest weather conditions.

Available in different sizes. The interior of these buildings can be customized to suit your specific needs. Brooklin will deliver to your desired location and we can also assist in moving the structure in the future if the need arises.



MARKHAM ONTARIO - PROTECTING PARKING LOT LIGHTING CONTROL PANELS AT A GO TRAIN STATION



TAMPER RESISTANT

FIREPROOF

MAINTENANCE FREE

PORTABLE

MISSISSAUGA ONTARIO - POWER UNIT FOR PORTABLES AT A HIGH SCHOOL



NEWMARKET ONTARIO - MAINTENANCE EQUIPMENT STORAGE FOR A HOSPITAL

FOR INDUSTRIAL PLANTS, HOSPITALS AND COMMERCIAL APPLICATIONS

Brooklin's environmental structure provides fire-resistant storage for hazardous materials, flammable chemical and fuels. To ensure protection, these units include a "sump floor" to provide containment, and are supplied with venting that conforms to all MOE and MOA recommendations.



FOR SCHOOLS AND DAYCARES

The ideal place to store toys, as well as sporting goods and equipment

FOR PARKS AND SEWER COMPANIES

Protect your tools and maintenance equipment, as well as recycled goods and garbage.

FOR PETROLEUM COMPANIES

Protect your products (washer fluid, oil, seasonal products, etc.) 24/7.

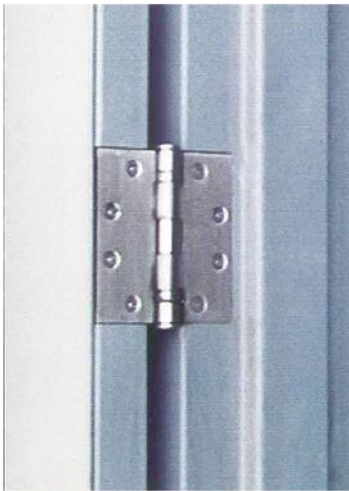
FOR ELECTRICAL CONTRACTORS

Brooklin's utility buildings are built to protect your electrical panels and equipment - the interior of these fire-resistant buildings can be customized to suit.

FEATURES

HINGES

Powder Coated Finish, Steel Door & Frame, NRP Hinges



VENTS

Galvanized or Aluminum Vents



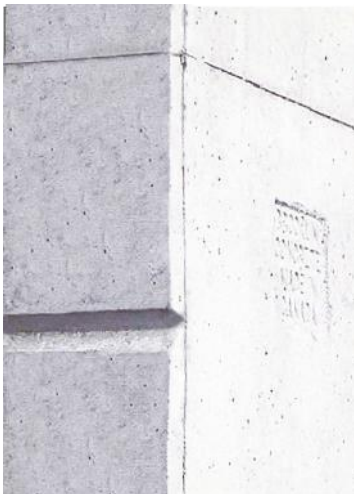
LOCKS

Commercial-Keyed Schlage Locks



CORNERS

Chamfered Corners for Safety



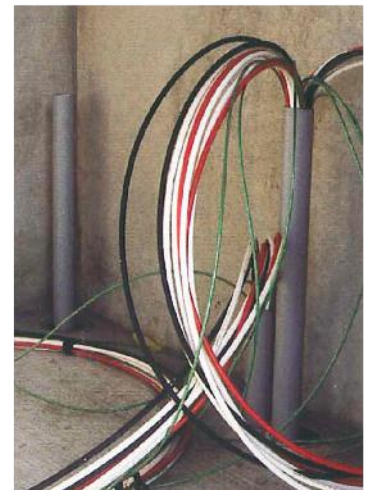
FLOORS

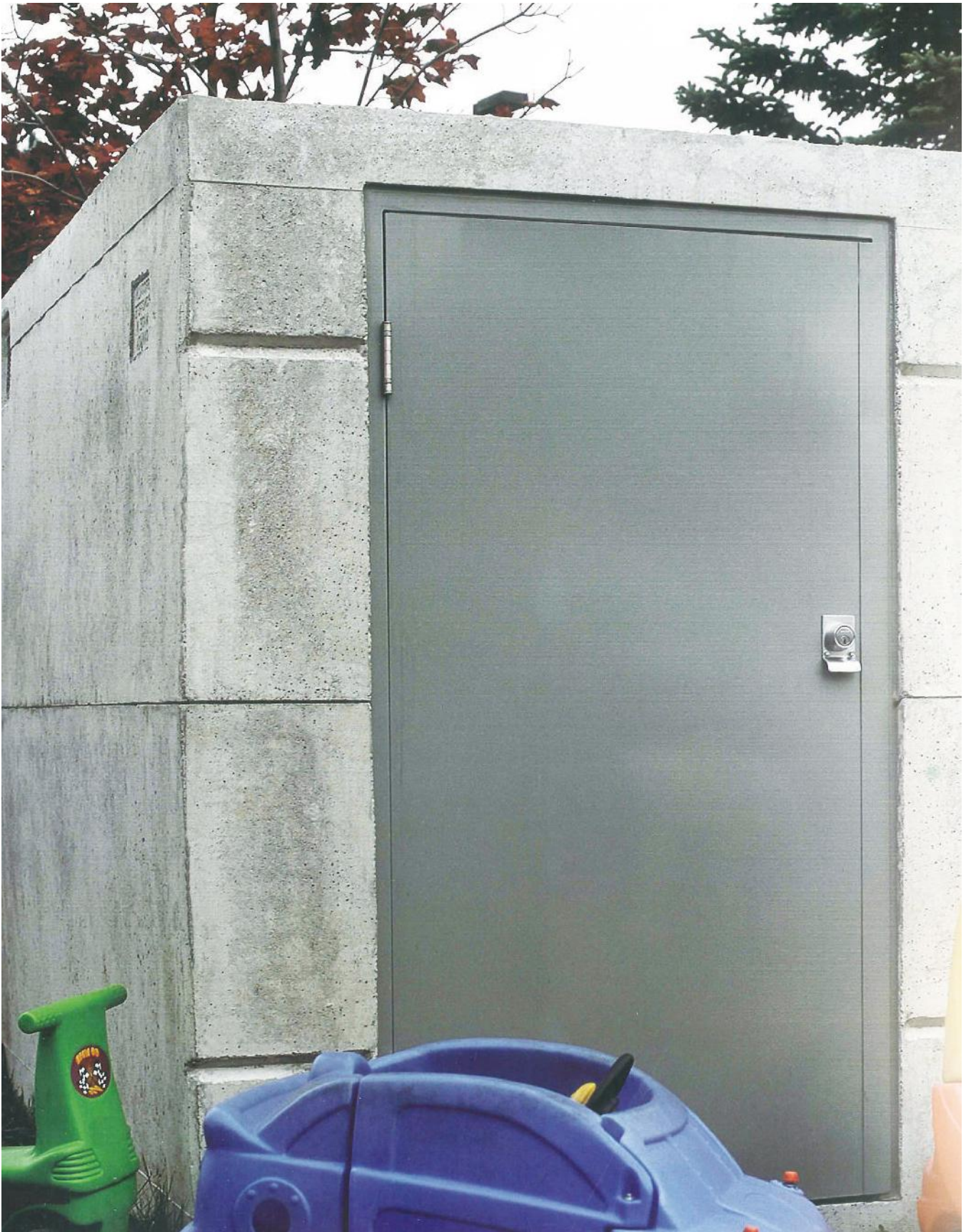
Sump Floor Contains Spills (on E Models)



CUSTOMIZE

Customize to suit Application





WHITBY ONTARIO - STORAGE UNIT FOR CHILDREN'S TOYS AT A PUBLIC SCHOOL

TECHNICAL SPECIFICATIONS

ENVIRONMENTAL MODELS E

To ensure protection against environmental damage and expense caused by spills of hazardous materials, all models are available with a “sump floor” to provide containment. These models are supplied with increased venting to conform to all MOE and MOA recommendations.

CONSTRUCTION MODELS: 40, 40E, 70, 70E

Two piece steel reinforced, air entrained precast concrete construction with gasketed tongue and groove centre joints. Concrete strength - 4500 PSI minimum. Vertical corners chamfered 1/2". Water blasted exterior finish. (Exposed aggregate available - custom order).

MODEL 105 & 200

Bolted panel assembly air entrained steel reinforced concrete. Exterior corners rounded. Brushtex or exposed aggregate exterior finish. Slip resistant interior floor.



**WOODBIDGE ONTARIO - STORAGE UNIT
FOR SPORTS EQUIPMENT AT A PUBLIC
SCHOOL**

MODEL	LENGTH	WIDTH	HEIGHT	INSIDE	WEIGHT	VENTS	FIRE RATING
40	8'-4"	5'-6"	6'-7"	7'-7" x 5'-6"	9,000 lbs.	2'-8" x 6"	3/4 hr
70	12'-8"	7'-0"	6'-10"	11'-11" x 6'-2" x 6'	16,000 lbs.	3'-8" x 6"	3/4 hr
40E	8'-4"	5'-6"	6'-7"	7'-7" x 5' x 6'	9,000 lbs.	2'-18" x 12"	3/4 hr
70E	12'-8"	7'-0"	6'-10"	11'-11" x 6'-2" x 6'	16,000 lbs.	2'-18" x 12"	3/4 hr
105	13'-5 1/2"	8'-4"	7'-10"	12'-1/2" x 7'-2" x 6'-10"	24,820 lbs.	2'-18" x 12"	3/4 hr
200	20'	10'-0"	9'	18'-8" x 8'-8" x 8'	43,600 lbs.	ON REQUEST	3/4 hr

HARDWARE

Frame - 1 3/4" x 2 7/8" custom roll-formed steel door frame, lag fastened to concrete sealed with a joint sealant.

Model 40 Single Door - One - 34-7/8" x 67-3/4" x 1-3/4" standard architectural steel door. Powder coat finish.

Model 70 Double Door - Two - 31-1/2" x 70" x 1-3/4" standard architectural steel doors. Powder coat finish.

Model 105 Double Door - Two - 36" x 80" x 1-3/4" standard architectural doors. Powder coat finish.

Model 200 Double Door - Two - 36" x 80" x 1-3/4" standard architectural doors. Powder coat finish.

LOCKS

Schlage commercial keyed deadbolt lock (standard), complete with flush mount finger grip on all models. One door also barrel-bolts, top and bottom on two door models.



Since 1952, Brooklin has been serving the needs of construction professionals, architects and specifiers as well as homeowners throughout Ontario. As a leading producer of innovative precast products, Brooklin has a complete line of Hardscape, Septic Tanks, Utility Structures and Specialty Precast Units.



LINDSAY OFFICE

brooklinsales@brooklin.com

1 Fleetwood Rd,
Lindsay, ON, Canada K9V 6J1

T: 905-655-3311 | 1-800-655-3430
F: 905-655-3847

HUNTSVILLE /HALIBURTON OFFICE

huntsvillesales@brooklin.com

21 Stephenson Road 12 (East of Hwy 11),
Huntsville, ON, Canada P1H 2K8

T: 705-789-2338 | 1-800-264-3302
F: 705-789-9829

WWW.BROOKLIN.COM